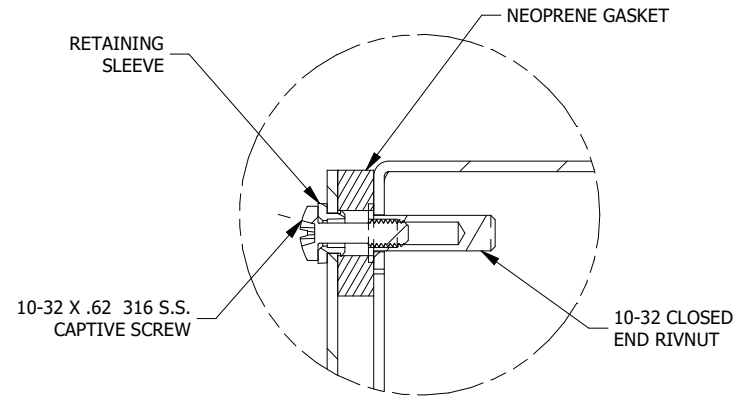
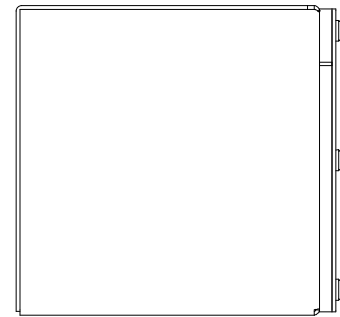
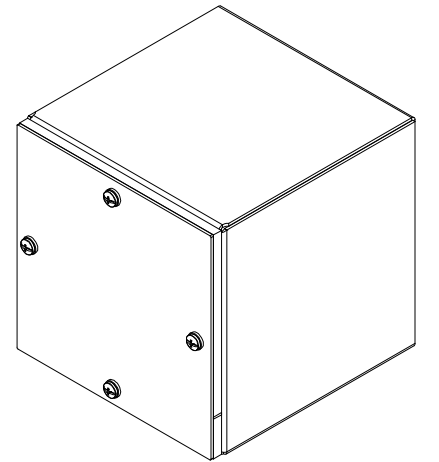


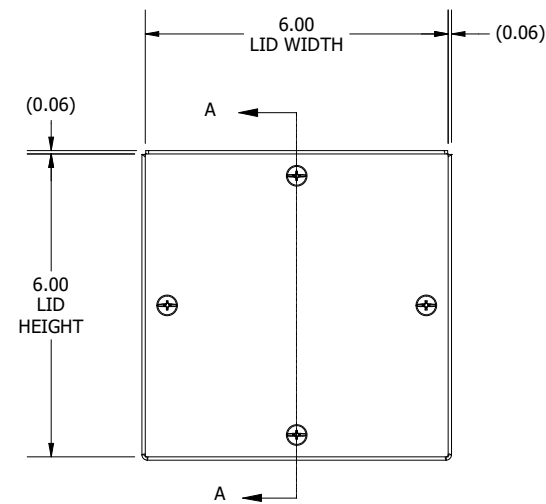
TOP VIEW



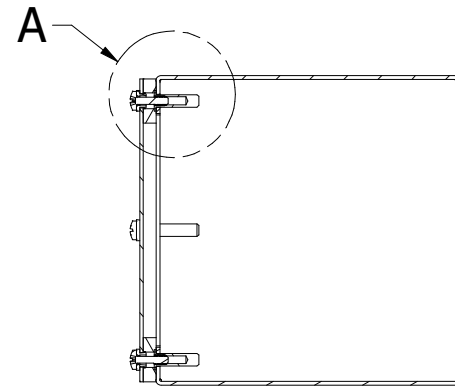
DETAIL A (4 PL.)
(LID INSTALL DETAIL)



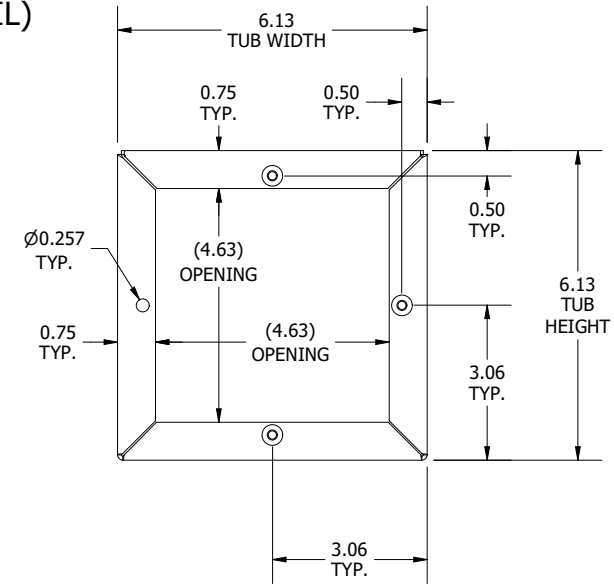
LEFT SIDE VIEW



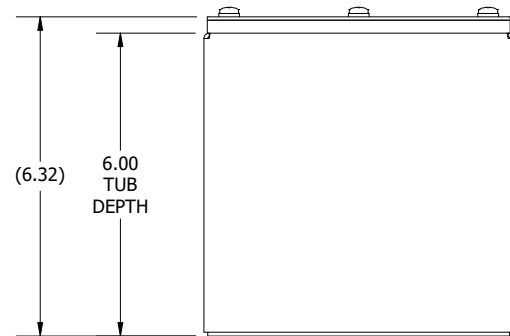
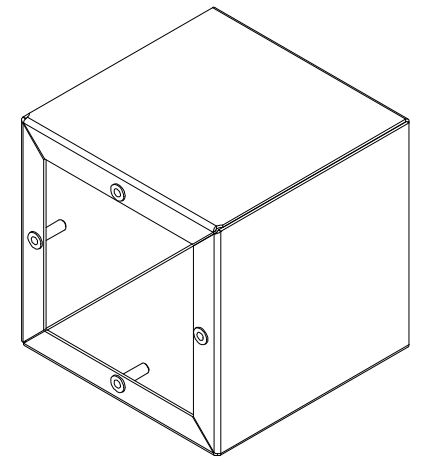
FRONT VIEW



SECTION A-A
(INSIDE LEFT OF ENCL.)



FRONT VIEW
(LID AND (1) RIVNUT REMOVED)



BOTTOM VIEW

PART #:WA060606GSCSSA
(DATA SUBJECT TO CHANGE WITHOUT NOTICE)
THIS DRAWING IS THE PROPERTY OF HUBBELL INC. WIEGMANN
ALL INFORMATION IS PROPRIETARY AND NOT TO BE DUPLICATED