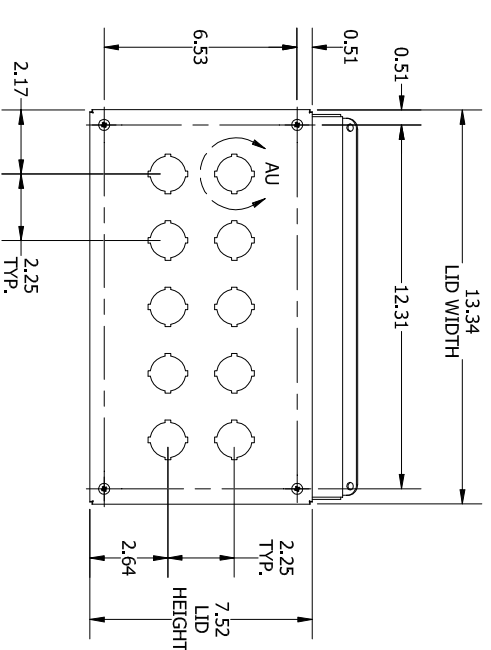
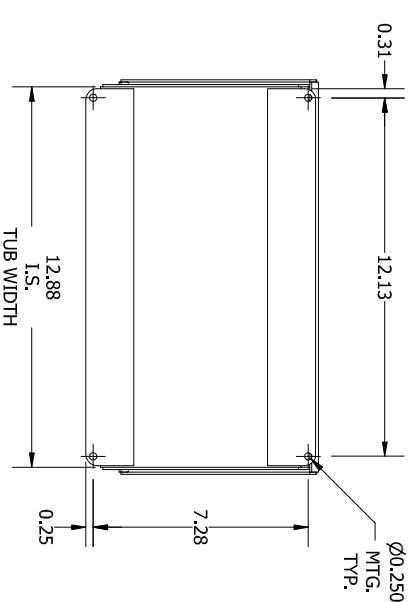
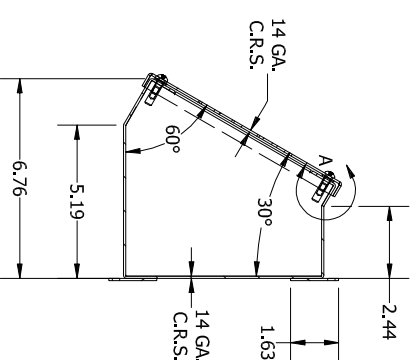
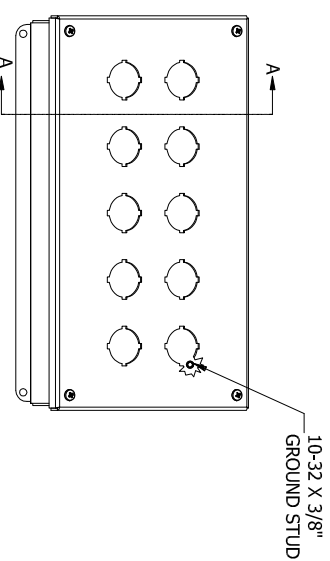
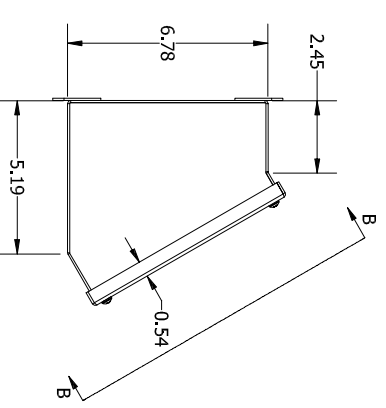


**VIEW B-B**  
(LID ASSM. REMOVED)

**DETAIL A (4 PL.)**  
(LID ATTACHMENT DETAIL)



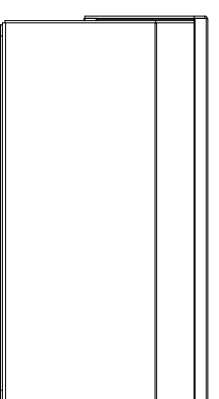
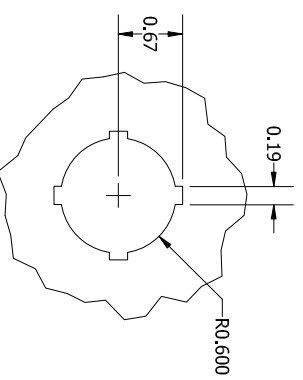
**LEFT SIDE VIEW**

**FRONT VIEW**

**SECTION A-A**  
(INSIDE LEFT OF ENCL.)

**BACK VIEW**

**SECTION B-B**  
(STRAIGHT AHEAD VIEW OF LID)



**DETAIL AU**  
(TYP. PUSH BUTTON)

**REAR VIEW**

PART#: WPBA10  
(DATA SUBJECT TO CHANGE WITHOUT NOTICE)

THIS DRAWING IS PROPERTY OF HUBBELL INC. WIEGMANN  
ALL INFORMATION IS PROPRIETARY AND NOT TO BE DUPLICATED