

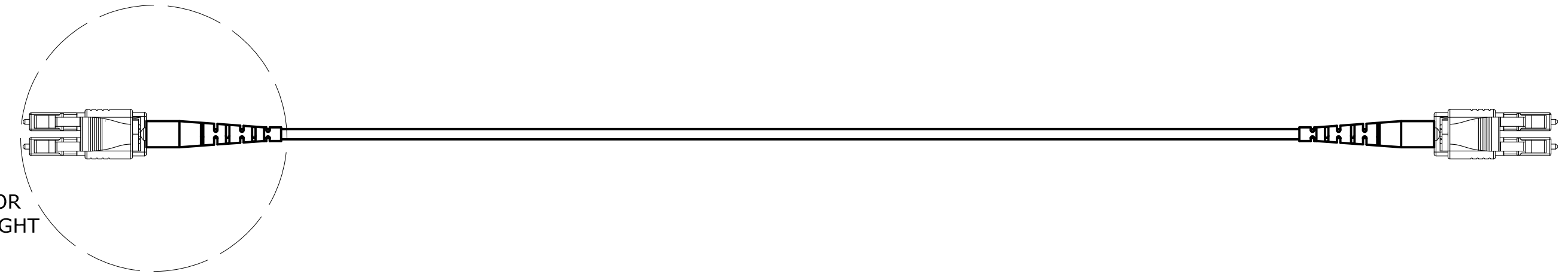
CATALOG NO.	DESCRIPTION	CABLE TYPE	SM/MM	CABLE COLOR	CONN. COLOR	BOOT COLOR
HDPCLCRPG3Mxx	FIBER OPTIC PATCH CORD, PLENUM, HIGH DENSITY LC-LC DUPLEX, REVERSIBLE POLARITY	50/125 OM3	MM	AQUA	AQUA	WHITE
HDPCLCRPG4xx		50/125 OM4	MM	AQUA	AQUA	
HDPCLCRPSMxx		9/125 OS2	SM	YELLOW	BLUE	

xx = LENGTH IN METERS

AVAILABLE IN THE FOLLOWING LENGTHS:

- 1 METER
- 2 METER
- 3 METER
- 4 METER
- 5 METER
- 6 METER
- 8 METER
- 10 METER

SEE LC CONNECTOR
DETAIL BELOW RIGHT



CERAMIC FERRULE PRE-RADIUSED
MACHINE POLISHED TWO-PART
HEAT CURED EPOXY TERMINATION

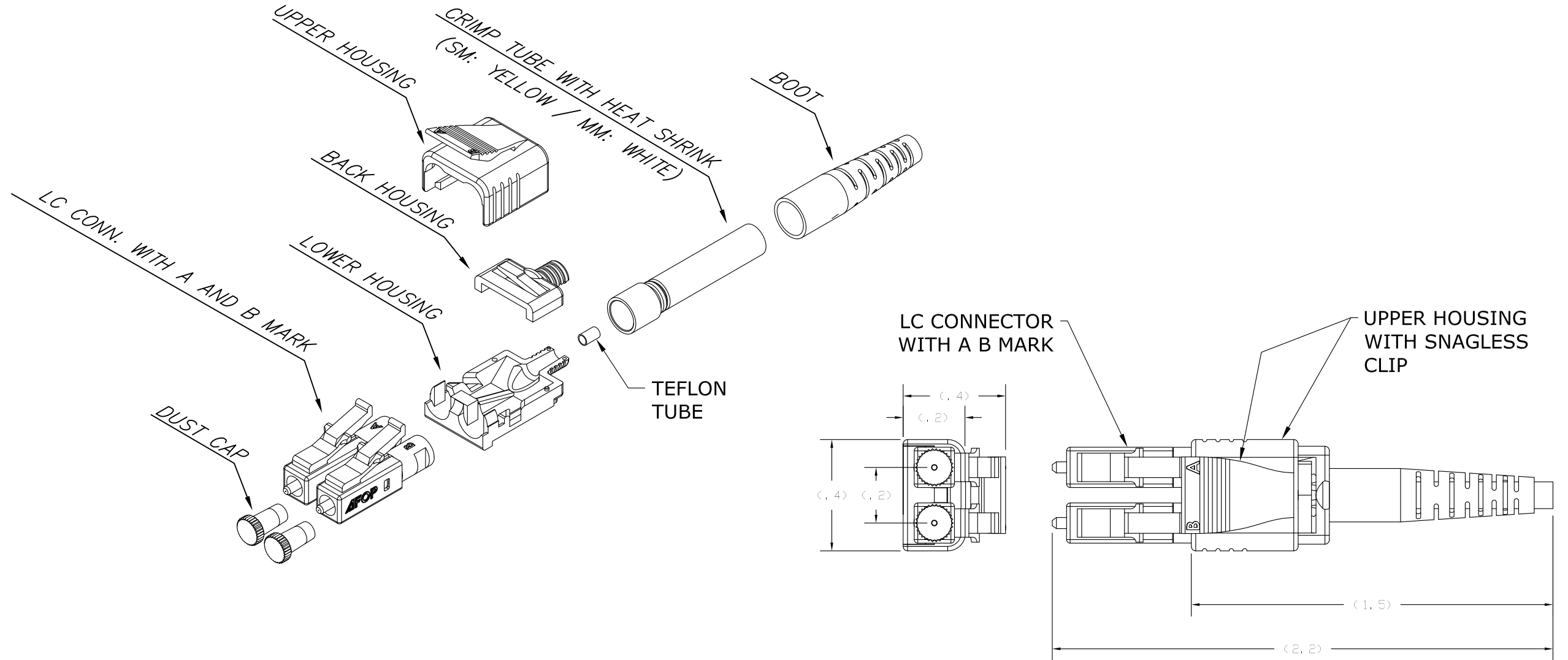
STRAIN RELIEF BOOT
COLOR: SEE
TABULATION

LENGTH + 10%/-0%

OFNP 2.4mm JACKETED KEVLAR REINFORCED
ROUND CABLE WITH 900µm FIBER.
COLOR/TYPE: SEE TABULATION

DUST CAP SHIPPED
INSTALLED

LC DUPLEX CONNECTOR WITH
SNAGLESS CLIP. COLOR: SEE
TABULATION



NOTES:

1. CONNECTOR OPTICAL, MECHANICAL, AND ENVIRONMENTAL PERFORMANCE MEETS TIA/EIA-568C.3 SPECIFICATION.
2. FIBER IS RATED FOR:
OM4: 100 Gb/s OVER 150 METERS AT 850nm
OM3: 10 Gb/s OVER 300 METERS AT 850nm
3. CONNECTOR USES A PC RADIUS TIP ZIRCONIA CERAMIC FERRULE
4. OPTICAL INSERTION LOSS TEST DATA INCLUDED IN EACH BAGGED PATCH CORD
5. POLARITY IS REVERSIBLE
6. SPECIFICATIONS SUBJECT TO CHANGE WITHOUT PRIOR NOTICE

Created on AUTOCAD	DIMENSIONING AND TOLERANCE PER ANSI Y14.5M-1982 UNLESS OTHERWISE SPECIFIED, DIMENSIONS ARE IN INCHES (MM). TOLERANCES .XX = ±.01 (.25) .XXX = ±.005 (.127) .XXXX = ±.0025 (.0635) ANGLE TOL ±1°		PROJECT REFERENCE:		Hubbell Premise Wiring HUBBELL INCORPORATED (Delaware) 14 Lord's Hill Road, Stonington, Connecticut 06378					
	IN ACCEPTING OUR DRAWINGS, BLUEPRINTS, OR SUPPORTING DOCUMENTATION FOR QUOTATION OR OTHER PURPOSES, YOU AGREE NOT TO DISCLOSE TO OTHERS THE IDEAS, INFORMATION, OR DESIGNS SHOWN HEREIN, AND THAT YOU WILL MAKE NO USE OF SAME WITHOUT PERMISSION		MATERIAL: SEE NOTES							
			DRAWN BY: J.RUOT-JACKSON 11/23/16		TITLE: HIGH DENSITY LC-LC DUPLEX PATCH CORDS WITH REVERSIBLE POLARITY					
			CHECKED BY:		<table border="1"> <tr> <td>SIZE</td> <td>DRAWING NO.</td> <td>REV.</td> </tr> <tr> <td>C</td> <td>HWS14720C</td> <td>1</td> </tr> </table>	SIZE	DRAWING NO.	REV.	C	HWS14720C
SIZE	DRAWING NO.	REV.								
C	HWS14720C	1								
		APPROVED BY:		SCALE: NTS SHEET 1 OF 1						

1	22394	01/03/17	INITIAL RELEASE	MMA	DO
REV.	ECN	DATE	DESCRIPTION	CHG BY	APPD BY