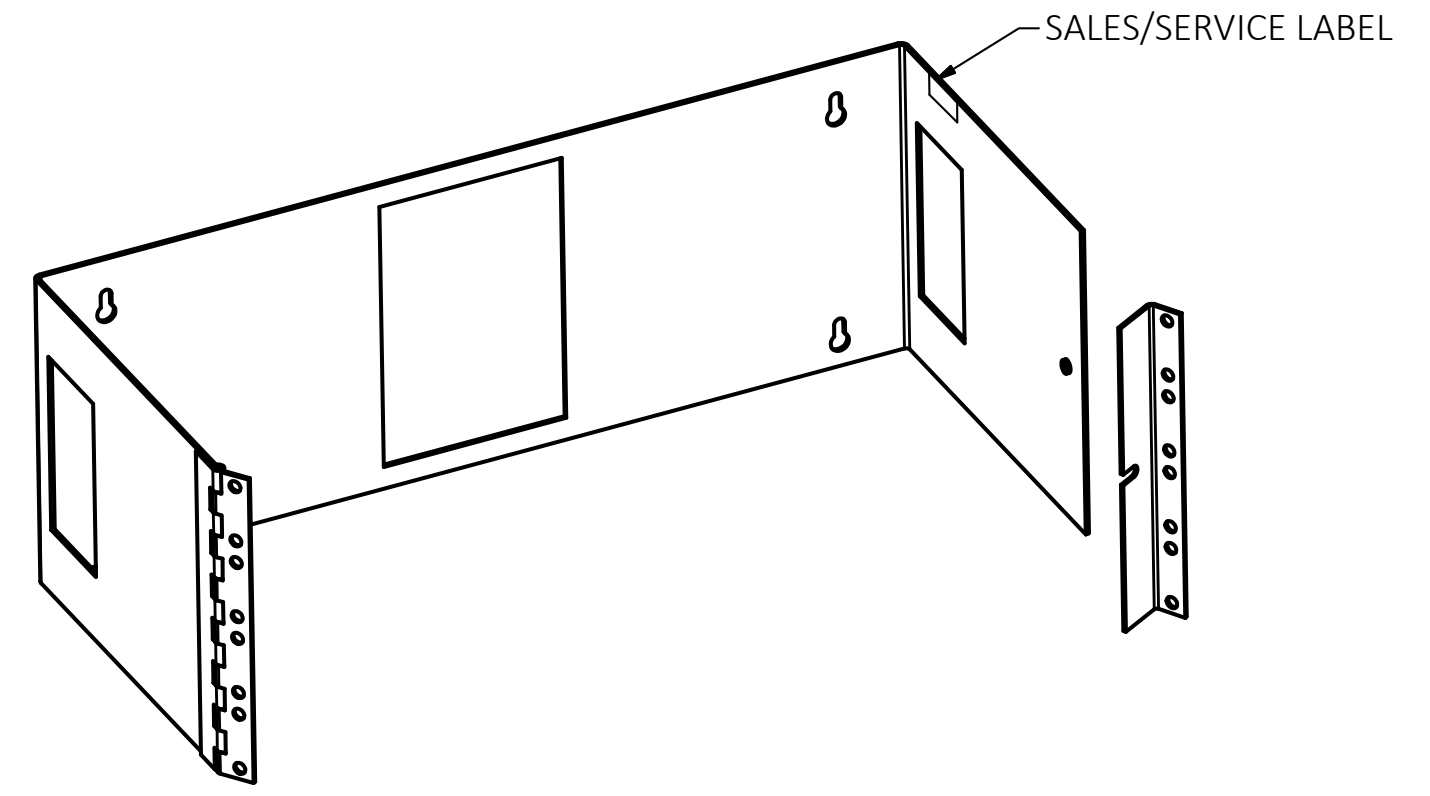
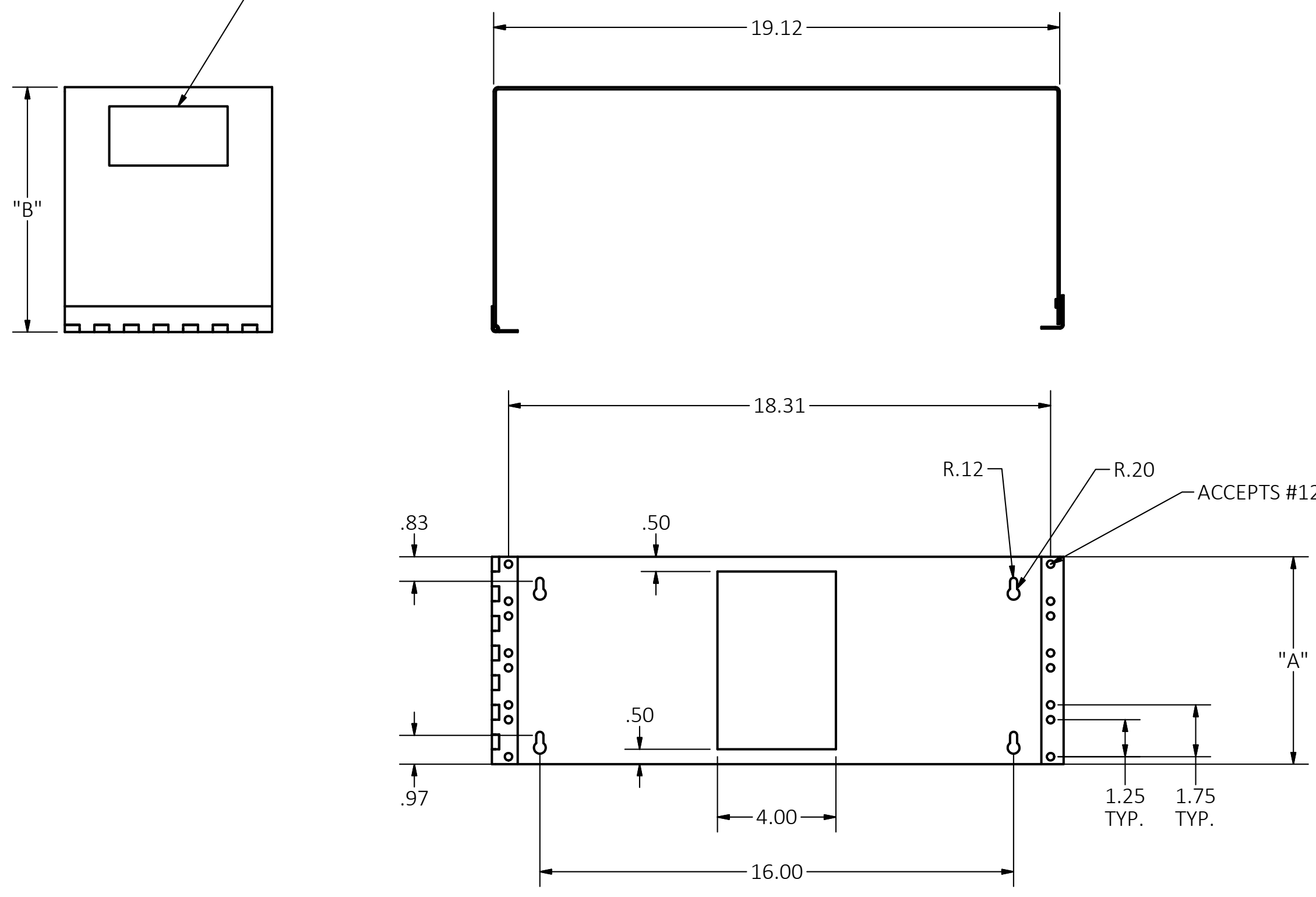


CATALOG NO.	DESCRIPTION	DIM "A"	DIM "B"	SIDE CUTOUT
WBS24	WALL MNT BRKT ASSEMBLY, 2U X 4"DP	3.50	4.30	N/A
WBS28	WALL MNT BRKT ASSEMBLY, 2U X 8"DP	3.50	8.30	N/A
WBS44	WALL MNT BRKT ASSEMBLY, 4U X 4"DP	7.00	4.30	2.00" X 4.00" (2X)
WBS48	WALL MNT BRKT ASSEMBLY, 4U X 8"DP	7.00	8.30	2.00" X 4.00" (2X)

RECTANGULAR CUTOUT,
SEE TABLE



- NOTES:
1. SURFACE FINISH: BLACK POWDER COAT
 2. THE FOLLOWING ITEMS SHIP UNASSEMBLED:
 (1) L-SHAPE EQUIPMENT MOUNTING BRACKET
 (1) #12-24 X 5/8 PAN HEAD SCREW
 (1) #12 FLAT WASHER
 3. SPECIFICATIONS SUBJECT TO CHANGE WITHOUT NOTICE.

REV.	ECN	DATE	DESCRIPTION	CHG BY	APPD BY
2	23720	12/10/18	UPDATED MOUNTING BRACKET	MMA	DO

Created on INVENTOR

DIMENSIONING AND TOLERANCE PER ANSI Y14.5M-1982 UNLESS OTHERWISE SPECIFIED, DIMENSIONS ARE IN INCHES (MM). TOLERANCES: XX = ±.01 (.25) .XXX = ±.005 (.127) .XXXX = ±.0025 (.0635) ANGLE TOL ±1°

IN ACCEPTING OUR DRAWINGS, BLUEPRINTS, OR SUPPORTING DOCUMENTATION FOR QUOTATION OR OTHER PURPOSES, YOU AGREE NOT TO DISCLOSE TO OTHERS THE IDEAS, INFORMATION, OR DESIGNS SHOWN HEREIN, AND THAT YOU WILL MAKE NO USE OF SAME WITHOUT PERMISSION

PROJECT REFERENCE: 029-18
MATERIAL: SEE COMPONENTS
DRAWN BY: MABBY 08/28/18
CHECKED BY:
APPROVED BY:

Hubbell Premise Wiring HUBBELL INCORPORATED (Delaware) 23 CLARA DRIVE, SUITE 103 MYSTIC, CT 06355		TITLE: WALL MOUNT BRACKET, SIDE HINGE	
		SIZE: C	DRAWING NO.: HWS14810C
SCALE: N/A		SHEET 1 OF 1	REV. 2