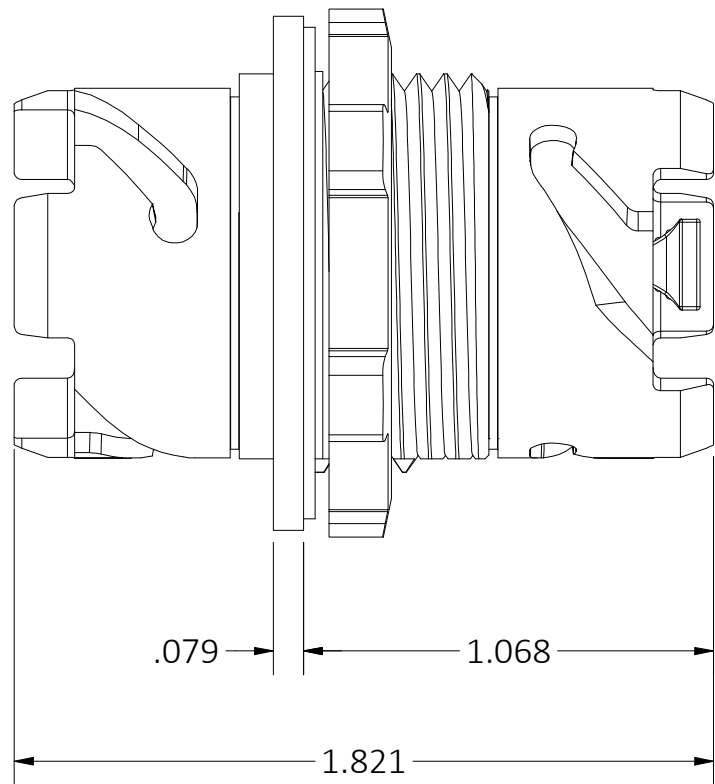
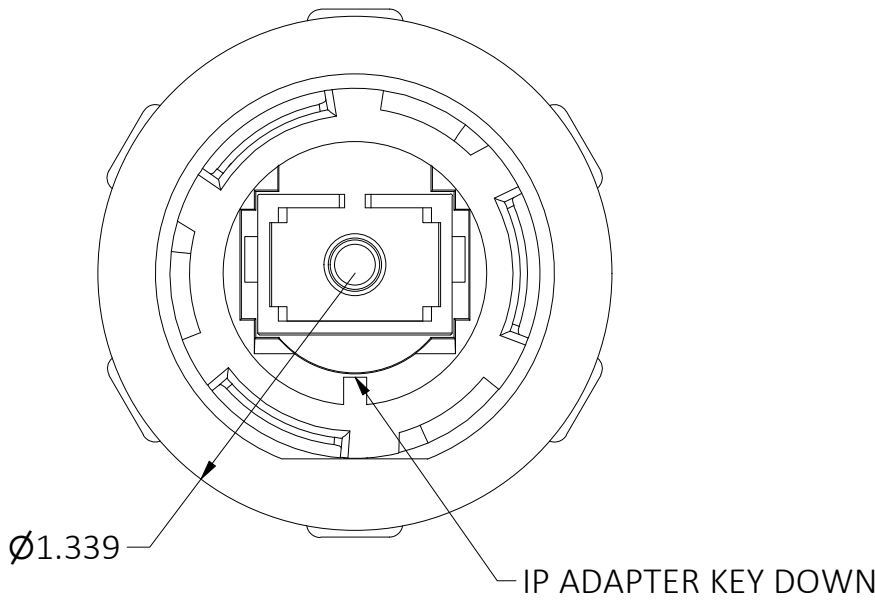
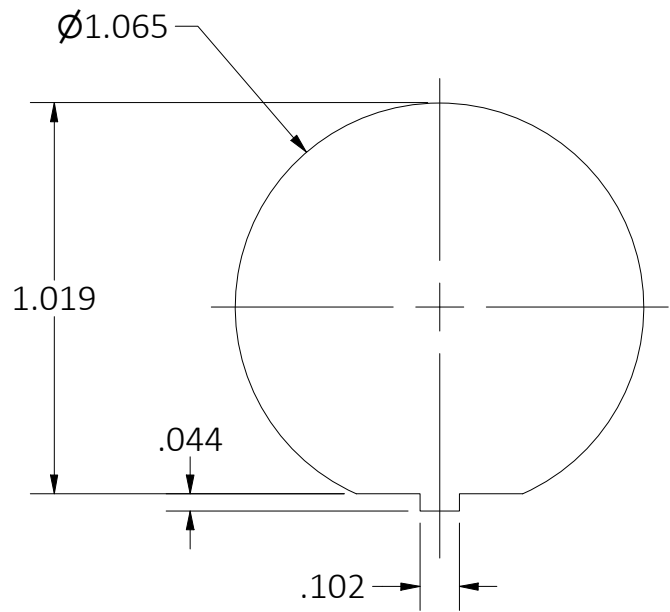
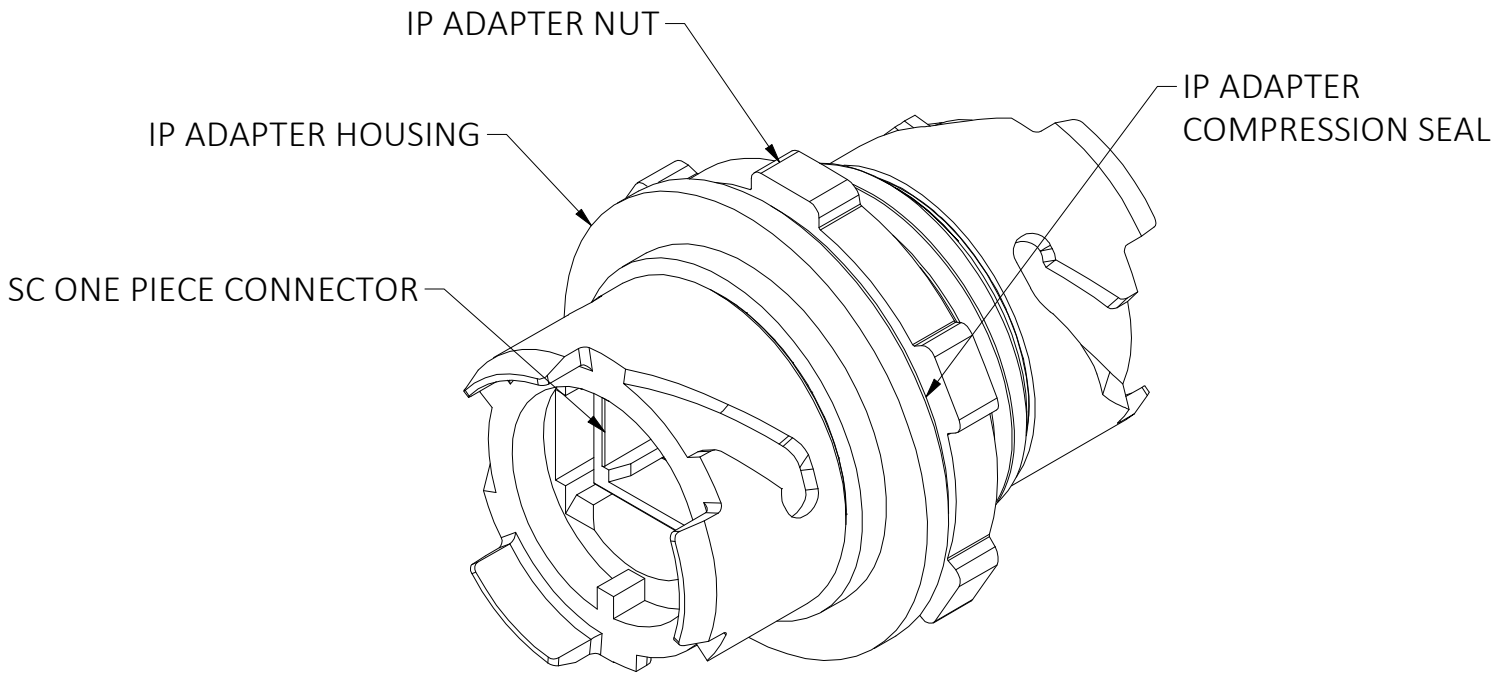



CATALOG NO.	DESCRIPTION	DUST CAP	SC CONNECTOR COLOR
HICSC	FIBER,HI,SC,SM/MM,IN-LINE,COUPLER	NO	BLACK



- NOTES:
- 1. KIT SHOULD CONTAIN :
    - (1) IP ADAPTER HOSUING
    - (1) SC ADAPTER
    - (1) IP ADAPTER SEAL
    - (1) IP ADAPTER NUT
  - 2. SPECIFICATION SUBJECT TO CHANGE WITHOUT NOTICE.
  - 3. ALL MATERIALS ARE COMPLIANT TO RoHS, REACH SVHC AND UL 94 V-0

1	240509039215	09/19/24	INITIAL RELEASE	RSS	MMA
REV.	ECN	DATE	DESCRIPTION	CHG BY	APPD BY

Created on INVENTOR	DIMENSIONING AND TOLERANCE PER ANSI Y14.5M-1982 UNLESS OTHERWISE SPECIFIED, DIMENSIONS ARE IN INCHES (MM). TOLERANCES.XX = ±.01 (.25) .XXX = ±.005 (.127) .XXXX = ±.0025 (.0635) ANGLE TOL ±1°	PROJECT REFERENCE: 03899	 <b>HUBBELL®</b> <b>Premise Wiring</b> HUBBELL INCORPORATED (Delaware) 40 WATERVIEW DR, SHELTON, CT 06484		
	IN ACCEPTING OUR DRAWINGS, BLUEPRINTS, OR SUPPORTING DOCUMENTATION FOR QUOTATION OR OTHER PURPOSES, YOU AGREE NOT TO DISCLOSE TO OTHERS THE IDEAS, INFORMATION, OR DESIGNS SHOWN HEREIN, AND THAT YOU WILL MAKE NO USE OF SAME WITHOUT PERMISSION	MATERIAL:  SEE NOTES			
		DRAWN BY: S.RUBAN 05/13/2024	TITLE: FIBER,HI,SC,SM/MM,IN-LINE,COUPLER		
		CHECKED BY:	SIZE C	DRAWING NO. HWS15293C	REV. 1
		APPROVED BY:	SCALE: NTS	SHEET 1 OF 1	