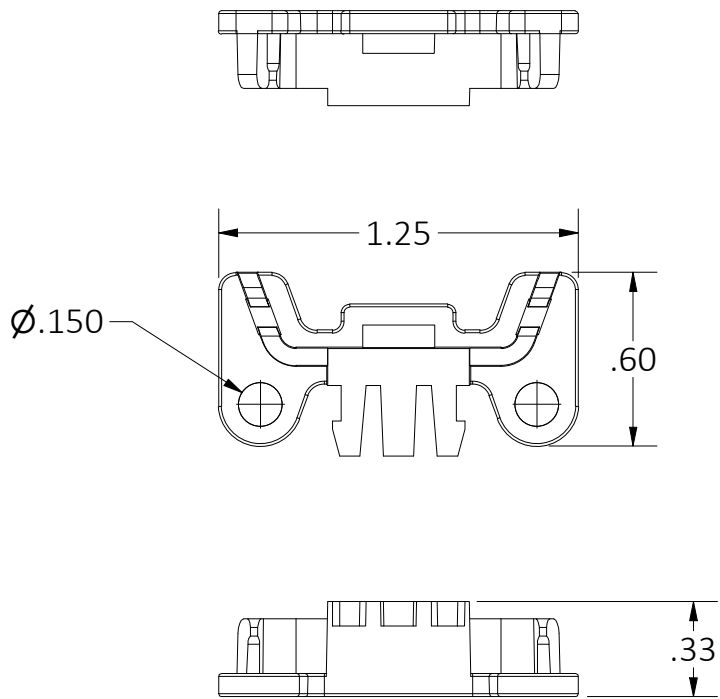
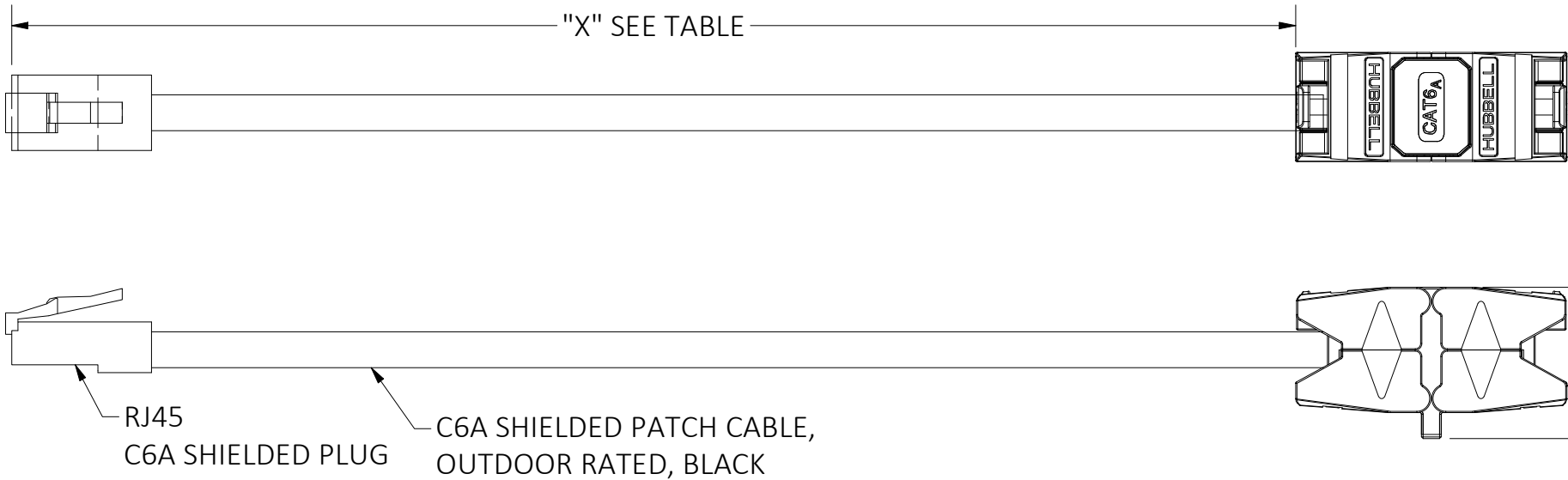


4		3	
CATALOG	DESCRIPTION	CABLE COLOR	LENGTH "X" (FT)
SCP6AIOBK	MPTL ASSY,C6A,SHIELDED,COBRA,I/O,18IN	BLACK	1.5
SCP6AIOBK03	MPTL ASSY,C6A,SHIELDED,COBRA,BK,3FT	BLACK	3
SCP6AIOBK05	MPTL ASSY,C6A,SHIELDED,COBRA,BK,5FT	BLACK	5
SCP6AIOBK07	MPTL ASSY,C6A,SHIELDED,COBRA,BK,7FT	BLACK	7
SCP6AIOBK10	MPTL ASSY,C6A,SHIELDED,COBRA,BK,10FT	BLACK	10
SCP6AIOBK15	MPTL ASSY,C6A,SHIELDED,COBRA,BK,15FT	BLACK	15

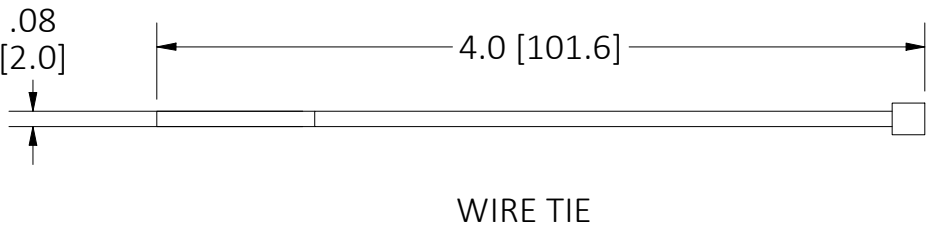


COUPLER MOUNTING CLIP
ACCEPTS 12 GAGE
SUSPENDED CEILING WIRE

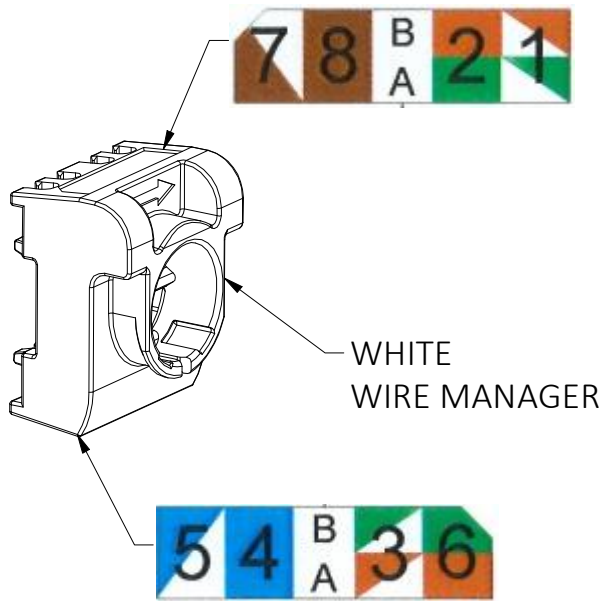


RJ45
C6A SHIELDED PLUG

C6A SHIELDED PATCH CABLE,
OUTDOOR RATED, BLACK



WIRE TIE



WHITE
WIRE MANAGER

NOTES:

1. PRODUCT INCLUDES THE FOLLOWING:

- (1) SINGLE ENDED C6A SHIELDED PATCH CORD TERMINATED TO SC6A COUPLER ASSEMBLY
- (1) 1 WHITE WIRE MANAGER
- (1) WIRE TIE
- (1) COUPLER MOUNTING CLIP
- (1) INSTRUCTION SHEET

2. MATERIALS:

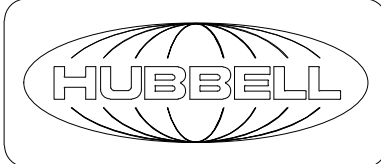
COUPLER HOUSING: ZINC ALLOY
WIRE MANAGERS: UL94 V-0 RATED THERMOPLASTIC
MOUNTING CLIP: UL94 V-0 RATED THERMOPLASTIC
CONTACTS: TIN PLATED PHOSPHOR BRONZE ALLOY
PATCH CORD: SHIELDED C6A, CMX OUTDOOR RATED

3. IDC TERMINATION ACCEPTS WIRE GAUGE: 22 TO 26 AWG.

4. COMPLIES WITH TIA 568.2-D CATEGORY 6A MPTL PERFORMANCE.

5. SPECIFICATIONS SUBJECT TO CHANGE WITHOUT NOTICE.

1	241009043099	11/4/24	INITIAL RELEASE	DPO	MMA
REV.	ECN	DATE	DESCRIPTION	CHG BY	APPD BY

Created on INVENTOR	DIMENSIONING AND TOLERANCE PER ANSI Y14.5M-1982 UNLESS OTHERWISE SPECIFIED, DIMENSIONS ARE IN INCHES (MM). TOLERANCES.XX = ±.01 (.25) .XXX = ±.005 (.127) .XXXX = ±.0025 (.0635) ANGLE TOL ±1°	PROJECT REFERENCE: NPD-03899	 Hubbell Premise Wiring HUBBELL INCORPORATED (Delaware) 23 CLARA DRIVE, SUITE 103 MYSTIC, CT 06355			
		MATERIAL:				
	IN ACCEPTING OUR DRAWINGS, BLUEPRINTS, OR SUPPORTING DOCUMENTATION FOR QUOTATION OR OTHER PURPOSES, YOU AGREE NOT TO DISCLOSE TO OTHERS THE IDEAS, INFORMATION, OR DESIGNS SHOWN HEREIN, AND THAT YOU WILL MAKE NO USE OF SAME WITHOUT PERMISSION	DRAWN BY: D.O'CONNOR 11/4/24	TITLE: C6A SHIELDED MPTL ASSEMBLY W/INDOOR-OUTDOOR CABLE			
		CHECKED BY:	SIZE	DRAWING NO.	REV.	
			C	HWS15374C		1
		APPROVED BY:	SCALE:		SHEET 1 OF 1	