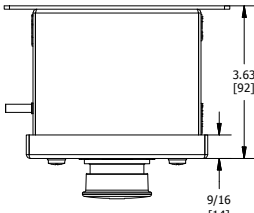


ENCLOSURE INFORMATION		
P/N:	23830KBAM	DESCRIPTION: BOX SST IF 1a, M20 BOTTOM
COVER:	23803ABAB	COVER SST IF 1a, SINGLE DEVICE
MOUNT METHOD:	23203AAAB	ASSY, DIN RAIL HKH 1 TIER
DEVICE 1 ASSEMBLY (1F)		
P/N:	HKHPBMTMR	DESCRIPTION: MAINTAINED PUSH PULL MUSHROOM HD, RED
LGND. PLATE:	23225CAAB	STOP
LOCKOUT ACCY:	NONE	N/A
CONTACT 1:	HKH1NO20D	CONTACT BLK, FACT SEALED N.O. DRM, 20A
CONTACT 2:	HKH1NC20D	CONTACT BLK, FACT SEALED N.C. DRM, 20A

CONTACT BLOCK RATINGS:  
690 VAC, 20A, 50-60  
60 VDC, 5A, 110VDC, 1.5A

1/2 HP @ 120 VAC, 1 HP @ 208/240/277VAC  
NEMA A600/P600 - PILOT DUTY  
350VAC, 20A - TUNGSTEN  
AC690V 16A AC-12  
AC230V 16A AC-15  
50-60HZ  
DC60V 5A DC-13  
TERMINALS RATED FOR 1-2 CONDUCTORS  
#22-10 AWG. (0.5-4mm<sup>2</sup>)



TOP VIEW

**CAT. NO. HKHMOD Series**  
ST. LOUIS, MO 63113

INDUSTRIAL CONTROL EQUIPMENT FOR USE IN ZONE CLASSIFIED HAZ. LOCS.  
CLASS I, ZONE 1, AEx de IIC T6...T4 Gb; Ex de IIC T6...T4 Gb X  
ZONE 21, AEx tb IIC T6...T4 Db IP66; Ex tb IIC T6...T4 Db IP66 X  
CLASS I, DIV.2, GRPS. A,B,C,D; CLASS II, DIV.1, GRPS. E,F,G (CANADA ONLY)  
CLASS II, DIV.2, GROUPS E,F,G; CLASS III, DIV.1 (CANADA ONLY)  
CLASS III; TYPE 3/4/4X/12/13; -50°C ≤Tas+60°C

UL LISTED A243 24617AAAM

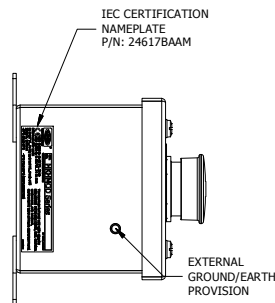
**CAT. NO. HKHMOD Series**  
ST. LOUIS, MO 63113

0539 Ø II2G Ex de IIC T6...T4 Gb  
0539 Ø II2D Ex tb IIC T6...T4 Db IP66  
DEMKO 15 ATEX 1405X  
Ex de IIC T6...T4 Gb; Ex tb IIC T6...T4 Db IP66  
IECEx UL 15.0054X  
-50°C ≤Tas+60°C (WITH AMMETER)

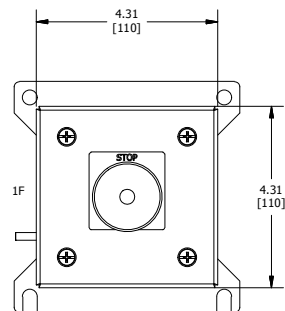
TO MAINTAIN RATINGS USE WITH KILLARK  
HIGH SERIES MATCHING COVER, BOX, CONTROL  
OPERATORS, AND INTERNAL  
COMPONENTS WITH SIMILAR CERTIFICATIONS.

24617BAAM

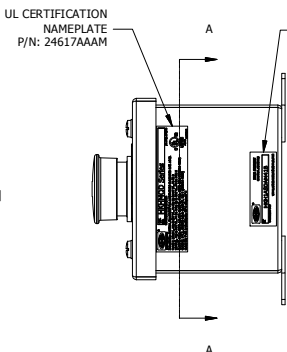
CERTIFICATION NAME PLATES



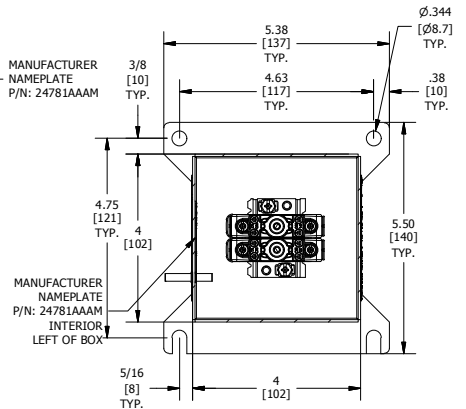
LEFT SIDE VIEW



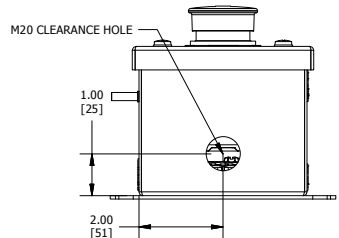
FRONT VIEW



RIGHT SIDE VIEW



SECTION A-A VIEW



BOTTOM VIEW

**HKH SERIES CONTROL STATIONS**

CAT. NO. **HKH1ASDAM41B**

COUNTRY/DATE CODE

WWW.HARSHANDHAZARDOUS.COM

MFG. NAME PLATE (REF.)

ENTRY HUB/GLAND SELECTION CHART*	
ENTRY NO.	HUB/GLAND:
ENTRY 1	NONE

\*HUBS & CABLE GLANDS ARE SHIPPED WITH ENCLOSURE (NOT INSTALLED)

THIS IS A COMPUTER GENERATED DRAWING. DO NOT ALTER. CHANGES ALLOWED ONLY TO COMPUTER MODEL.

DO NOT SCALE THIS DRAWING			P/N: HKH1ASDAM41B
G	N	U	<p>DESCRIPTION: HKH COMPLETE CONTROL STATION ENCLOSURE (HKH1ASDAM41B)</p> <p>DR. BY: PR 5/24/2016 REL PROD:</p> <p>CK. BY: KRA 5/24/2016 REL TOOL:</p> <p>SCALE: N/A REL DES:</p> <p>MATERIAL: N/A</p> <p>A. ERO-3-049-16 H Q</p> <p>PROJECT NO: HKH1ASDAM41B</p>
F	M	T	
E	L	S	
D	K	R	
C	J	Q	
B	I	P	
A	H	O	<p>LET CHG. NOT. NO. LET CHG. NOT. NO. LET CHG. NOT. NO.</p>

THIS DOCUMENT IS THE PROPERTY OF KILLARK. IT IS LOANED TO YOU AND MUST NOT BE USED IN ANY MANNER DETRIMENTAL TO THE INTEREST OF KILLARK.

SHEET 1 OF 1