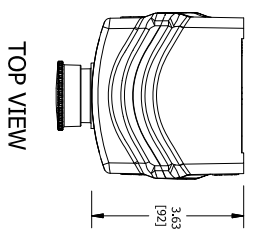
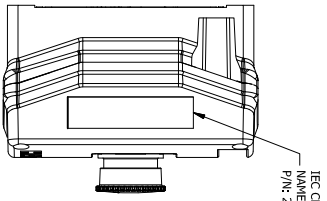


ENCLOSURE INFORMATION	
P/N:	2319BAM
DESCRIPTION:	BOX PLASTIC 1b, M20 BOTTOM
BOX:	2319BAM
COVER:	2319BABA
COVER PLASTIC 1b, ONE DEVICE	
ASSY. DIN RAIL HXH 2 TIER	
CONTACT 1:	HHHNC2M0
CONTACT 2:	HHHNC2M0

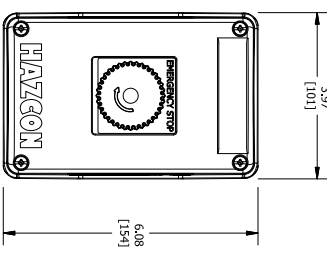
CONTACT BLOCK RATINGS:	
690 VAC, 20A, 3P-60	
60 VDC, 5A, 110VDC, 1.5A	
1/2 HP @ 120 VAC, 1 HP @ 208/240/277VAC	
350VAC, 20A - UL/CSG1EN	
AC230V 16A AC-15	
50-60HZ	
DC24V 5A, DC-13	
TERMINALS RATED FOR 1-2 CONDUCTORS	
#22-10 AWG, (0.5-9mm <sup>2</sup> )	



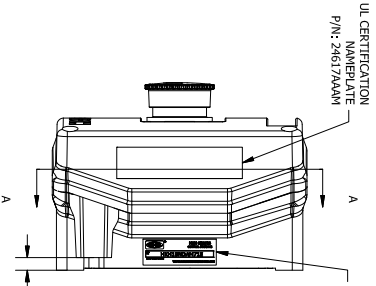
TOP VIEW



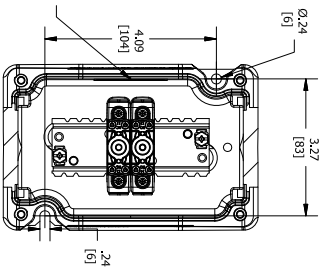
LEFT SIDE VIEW



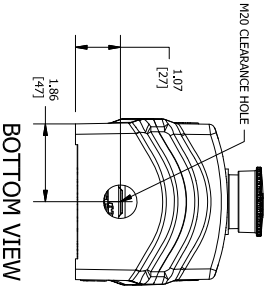
FRONT VIEW



RIGHT SIDE VIEW



SECTION A-A VIEW



BOTTOM VIEW

<b>CAT. NO.</b> <b>HKHMOD Series</b>	<b>CAT. NO.</b> <b>HKHMOD Series</b>	<b>CAT. NO.</b> <b>HKHMOD Series</b>	<b>CAT. NO.</b> <b>HKHMOD Series</b>
DATE CODE: 5/11 SEE TOP FROM K1466 FOR ELECTRICAL RATINGS.	DATE CODE: 5/11 SEE TOP FROM K1466 FOR ELECTRICAL RATINGS.	DATE CODE: 5/11 SEE TOP FROM K1466 FOR ELECTRICAL RATINGS.	DATE CODE: 5/11 SEE TOP FROM K1466 FOR ELECTRICAL RATINGS.

CERTIFICATION NAME PLATES

COMMENT:	SGN:	DATE:	ACCEPTANCE:	DRAWN BY:	DATE:	DWG NUMBER:
CODE 1: APPROVED (NO COMMENTS)						
CODE 2: APPROVED FOR MANUFACTURING						
WITH COMMENTS TO BE INCORPORATED						
CODE 3: NOT APPROVED RE-SUBMIT						
CODE 4: FOR INFORMATION ONLY						

ENTRY HUB/GLAND SELECTION CHART*	
ENTRY NO.	HUB/GLAND:
ENTRY 1	NONE

\*HUBS & CABLE GLANDS ARE SHIPPED WITH ENCLOSURE

TITLE: HKH MODIFIED ENCLOSURE (HKH1BNDAM71E)

SALES/QUOTE NO.: N/A

ITEM: N/A

REVISION	DESCRIPTION	DATE
1		
2		
3		
4		

**HKH SERIES CONTROL STATIONS**  
 HKH1BNDAM71E  
 WWW.HKSHANDHARDWARE.COM

MFG. NAME PLATE (REF.)