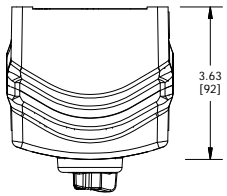


ENCLOSURE INFORMATION		
P/N:	DESCRIPTION:	
BOX: 23197KBAM	BOX PLASTIC 1b, M20 BOTTOM	
COVER: 23194BAAB	COVER PLASTIC 1b, ONE DEVICE	
MOUNT METHOD: 23203BAAB	ASSY, DIN RAIL HKH 2 TIER	
DEVICE 1 ASSEMBLY (1F)		
P/N:	DESCRIPTION:	
DEVICE: HHKH2PSMMRV	2 POS SEL SWT MOMENTARY RIGHT, VERT	
LEGEND PLATE: 23225AAAB	LAM., BLANK	
LOCKOUT DEV.: NONE	N/A	
CONTACT 1: HKH1NO20D	CONTACT BLCK, FACT SEALED N.O. DRM, 20A	
CONTACT 2: HKH1NC20D	CONTACT BLCK, FACT SEALED N.C. DRM, 20A	

CONTACT BLOCK RATINGS:
 690 VAC, 20A, 50-60
 60 VDC, 5A, 110VDC, 1.5A

1/2 HP @ 120 VAC, 1 HP @ 208/240/277VAC
 NEMA A600/P600 - PILOT DUTY
 350VAC, 20A - TUNGSTEN
 AC690V 16A AC-12
 AC230V 16A AC-15
 50-60HZ
 DC60V 5A DC-13
 TERMINALS RATED FOR 1-2 CONDUCTORS
 #22-10 AWG. (0.5-4mm²)



TOP VIEW

CAT. NO. HKHMOD Series DATE CODE-S/N

WWW.HARSHANDHAZARDOUS.COM ST. LOUIS, MO 63113

0539 I12G Ex de IIC T6...T4 Gb
 0539 I12D Ex tb IIC T85°C...T135°C Db IP66
 DEMKO 15 ATEX 1405X
 Ex de IIC T6...T4 Gb
 Ex tb IIC T85°C...T135°C Db IP66
 IECEx UL 15 0054X
 -50°C ≤Tas+60°C
 (-40°C ≤Tas+55°C WITH AMMETER)

TR RU C-US.MIO62.B.04167 IEx 16.0079 INMETRO

EX IEC

Seguranca

UL LISTED A243

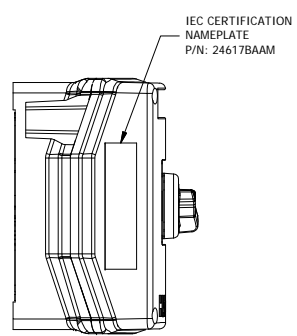
CAT. NO. HKHMOD Series DATE CODE-S/N

WWW.HARSHANDHAZARDOUS.COM ST. LOUIS, MO 63113

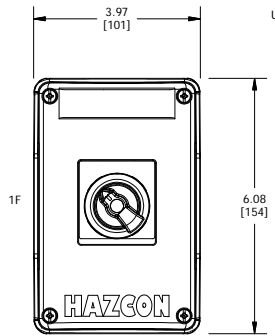
INDUSTRIAL CONTROL EQUIPMENT FOR USE IN ZONE CLASSIFIED HAZ. LOCS.
 CLASS I, ZONE 1, AEx de IIC T6...T4 Gb; Ex de IIC T6...T4 Gb
 ZONE 21, AEx tb IIC T85°C...T135°C Db IP66; Ex tb IIC T85°C...T135°C Db IP66
 CLASS I, DIV.2, GRPS. A.B.C.D; CLASS II, DIV.1, GRPS. E.F.G (CANADA ONLY)
 CLASS II, DIV.2, GROUPS E.F.G; CLASS III
 CLASS III; TYPE 3/4/4X/12/13; -50°C ≤Tas+60°C

SEE IOM FORM K1466 FOR ELECTRICAL RATINGS.

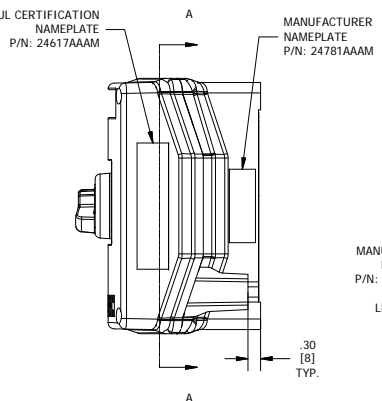
UL LISTED A243



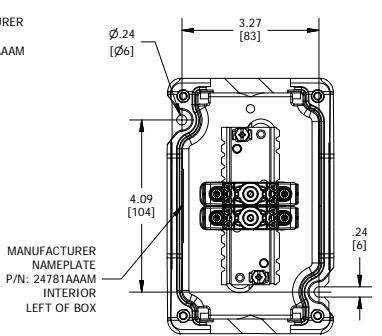
LEFT SIDE VIEW



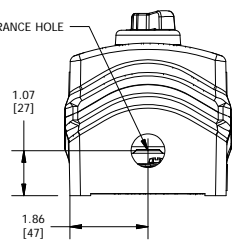
FRONT VIEW



RIGHT SIDE VIEW



SECTION A-A VIEW



BOTTOM VIEW

ENTRY HUB/GLAND SELECTION CHART*	
ENTRY NO.	HUB/GLAND:
ENTRY 1	NONE

*HUBS & CABLE GLANDS ARE SHIPPED WITH ENCLOSURE

HKH SERIES CONTROL STATION

CAT. NO. **HKH1BNDAS210**

COUNTRY/DATE CODE

WWW.HARSHANDHAZARDOUS.COM

COMMENT:	SGN:	DATE:	ACCEPTANCE:	DRAWN BY:	DATE:	DWG NUMBER:	ITEM:
			CODE 1: APPROVED (NO COMMENTS)	K.R.A.	05/01/2017	HKH1BNDAS210	N/A
			CODE 2: APPROVED FOR MANUFACTURING WITH COMMENTS TO BE INCORPORATED			SALES/QUOTE NO.:	N/A
			CODE 3: NOT APPROVED RE-SUBMIT				
			CODE 4: FOR INFORMATION ONLY				
REVISION				TITLE:		SHEET 1 OF 1	
				HKH MODIFIED ENCLOSURE (HKH1BNDAS210)			

THIS DOCUMENT IS THE PROPERTY OF HUBBELL - Select Company.
 IT IS LOANED TO YOU AND MUST NOT BE USED IN ANY WAY DETRIMENTAL TO THE INTEREST HUBBELL - Select Company.