

4

3

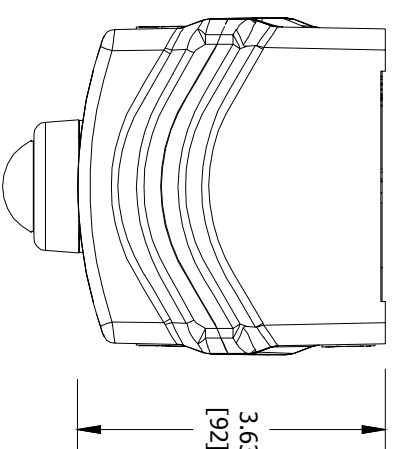
2

1

ENCLOSURE INFORMATION	
P/N:	DESCRIPTION:
2319/CBAM	BOX PLASTIC 1b, 3/4 NPT BOTTOM
COVER: 2319/BAAB	COVER PLASTIC 1b, ONE DEVICE
MOUNT METHOD: HKH/MBRKT	HKH PANEL MOUNT BRACKET, C. B. & P. L. (1 PL.)

PILOT LIGHT RATINGS:  
 LIGHT EMITTING DIODE  
 12-254 VAC/VDC LED  
 0.6W/TERMINALS RATED FOR 1-2 CONDUCTORS  
 #22-10 AWG. (0.5-4mm<sup>2</sup>)

DEVICE 1 ASSEMBLY (1F)	
P/N:	DESCRIPTION:
HKHPLR	PILOT LIGHT RED LENS ASSEMBLY
LGND. PLATE:	Blank
LOCKOUT ACQY:	N/A
CONTACT 1:	PILOT LIGHT MOD,PM

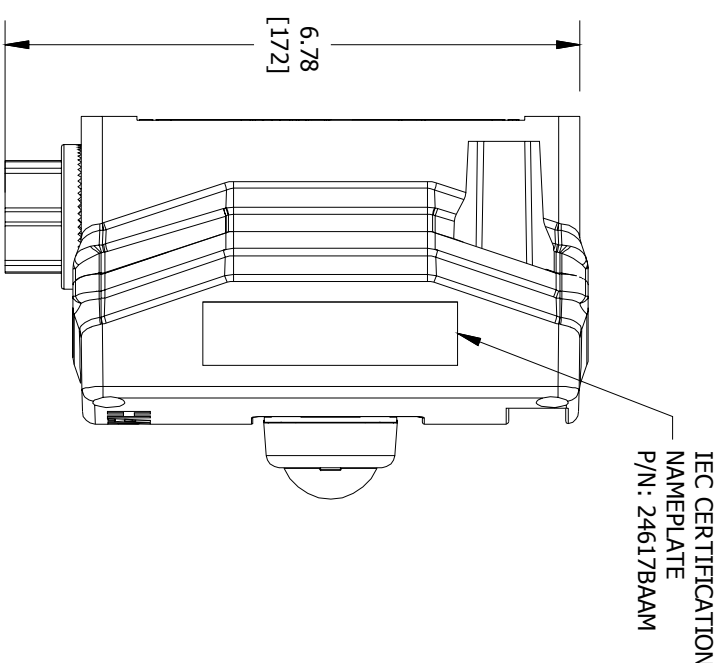


TOP VIEW

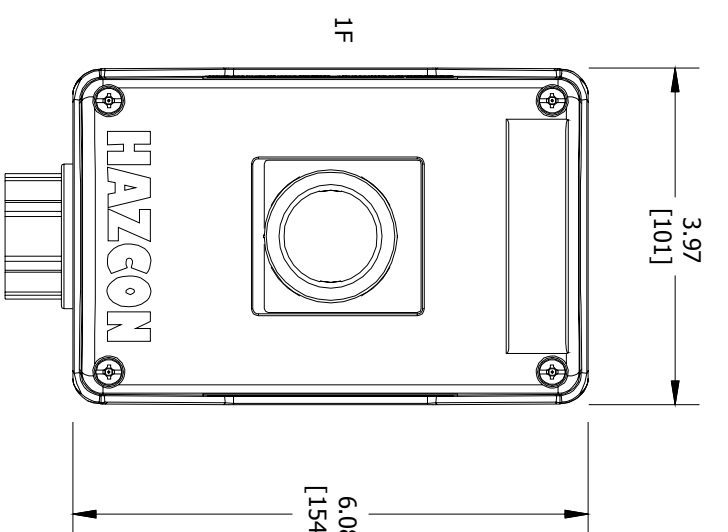
 Harsh & Hazardous www.harschandhazardous.com	<b>CAT. NO.</b> HKHMOD Series	DATE CODE/S/N ST. LOUIS, MO 63113
	SEE IOM FORM K1466 & K1470 FOR T-CODES AND FOR ELECTRICAL RATINGS.	IEX 16.0079 INMETRO TR RU C-US.M1062.B.04167

INDUSTRIAL CONTROL EQUIPMENT FOR USE IN ZONE CLASSIFIED HAZ. LOCS.  
 CLASS I, ZONE 1, AEx de IIC T6...T4 Gb; Ex de IIC T6...T4 Gb  
 ZONE 21, AEx tb IIIC T85°C...T135°C Db IP66; Ex tb IIIC T85°C...T135°C Db IP66  
 CLASS I, DIV.2, GRPS. A,B,C,D; CLASS II, DIV.1, GRPS. E,F,G (CANADA ONLY)  
 CLASS II, DIV.2, GROUPS E,F,G; CLASS III  
 CLASS III; TYPE 3/4/4X/12/13; -50°C STAs+60°C  
 SEE IOM FORM K1466 FOR ELECTRICAL RATINGS.

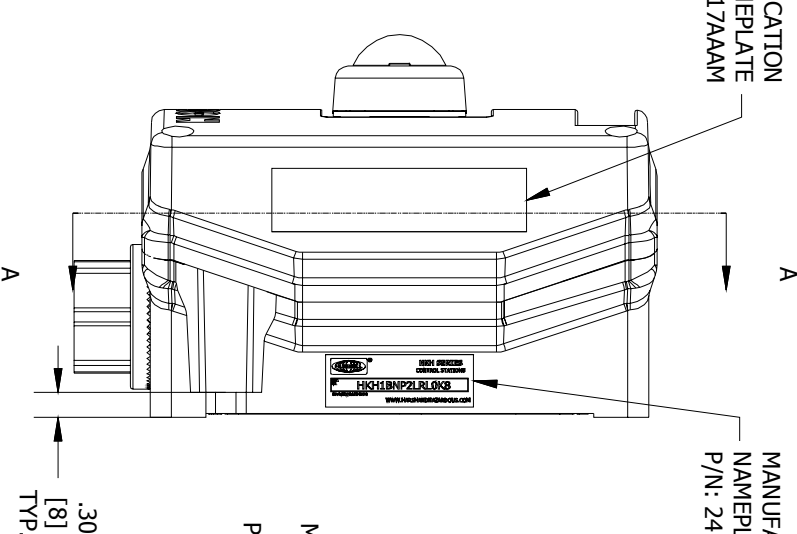
CERTIFICATION NAME PLATES



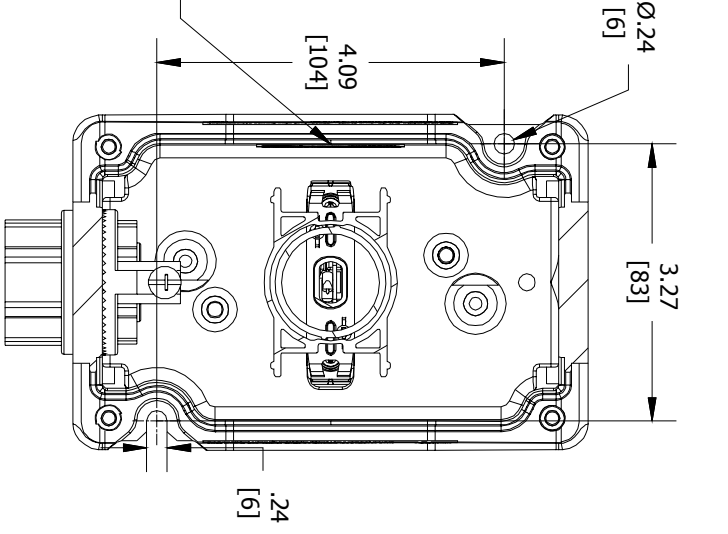
LEFT SIDE VIEW



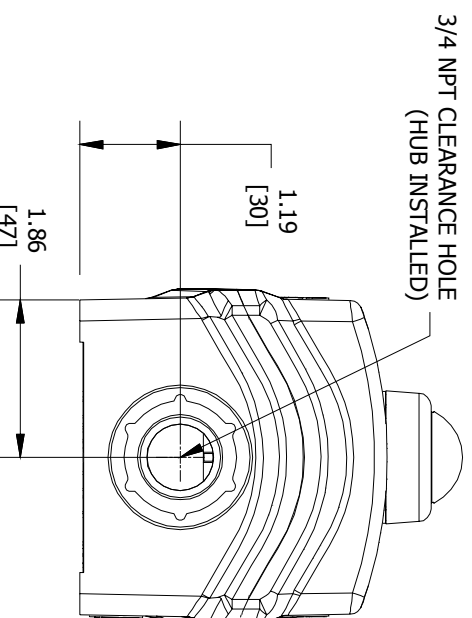
FRONT VIEW



RIGHT SIDE VIEW



SECTION A-A VIEW



BOTTOM VIEW

COMMENT:

ACCEPTANCE:

DRAWN BY:

DATE:

DWG NUMBER:

SGN:

CODE 1: APPROVED (NO COMMENTS)  
CODE 2: APPROVED FOR MANUFACTURING WITH COMMENTS TO BE INCORPORATED  
CODE 3: NOT APPROVED RE-SUBMIT  
CODE 4: FOR INFORMATION ONLY

PR

09-06-2016

SALES/QUOTE NO.:

ITEM: N/A

 HKH SERIES CONTROL STATIONS MFG. NAME PLATE (REF.) www.harschandhazardous.com	CAT. NO. <b>HKH1BNP2LR10K8</b> COUNT/DATE CODE
--	--

MFG. NAME PLATE (REF.)

REVISION



KILLARK

THIS DOCUMENT IS THE PROPERTY OF HUBBELL - KILLARK. IT IS LOANED TO YOU AND MUST NOT BE USED IN ANY WAY DETRIMENTAL TO THE INTEREST HUBBELL - KILLARK.

HKH MODIFIED ENCLOSURE (HKH1BNP2LR10K8)

SHEET 1 OF 1

ENTRY HUB/GLAND SELECTION CHART\*

ENTRY NO.	HUB/GLAND:
ENTRY 1	K8: WH-2SSG

\*HUBS & CABLE GLANDS ARE SHIPPED WITH ENCLOSURE

A

B

C

D

A

B

C

D