

4

3

2

1

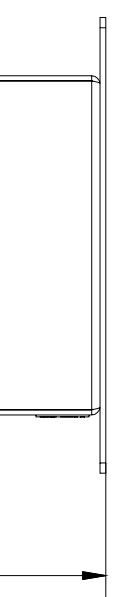
ENCLOSURE INFORMATION	
P/N:	23831KBAM
DESCRIPTION:	BOX SST 1F 1b, M20 BOTTOM
BOX:	23804BAB
COVER:	HKH1BSPAP11
MOUNT METHOD:	HKH PANEL MOUNT BRACKET, C. B. & P. L. (1 PL.)

CONTACT BLOCK RATINGS:  
690 VAC, 20A, 50-60  
60 VDC, 5A, 110VDC, 1.5A

1/2 HP @ 120 VAC, 1 HP @ 208/240/277VAC  
NEMA A600/P600 - PILOT DUTY  
350VAC, 20A - TUNGSSTEN  
AC690V 16A AC-12  
AC230V 16A AC-15  
50-60HZ

TERMINALS RATED FOR 1-2 CONDUCTORS  
#22-10 AWG. (0.5-4mm<sup>2</sup>)

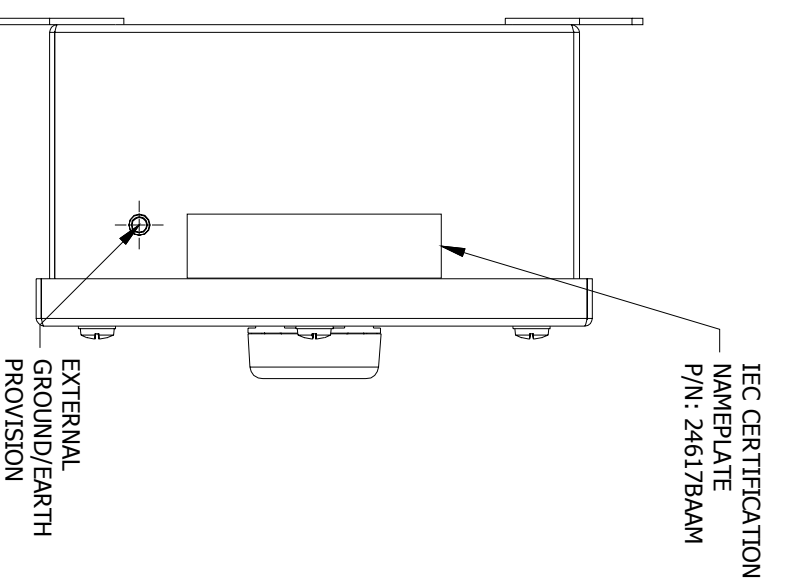
- \*SUPPLIED WITH 7 COLORED INSERTS:
1. "STOP" (RED)
  2. "START" (GREEN)
  3. "I" (GREEN)
  4. "O" (RED)
  5. BLANK (BLACK)
  6. BLANK (GREEN)
  7. BLANK (RED)



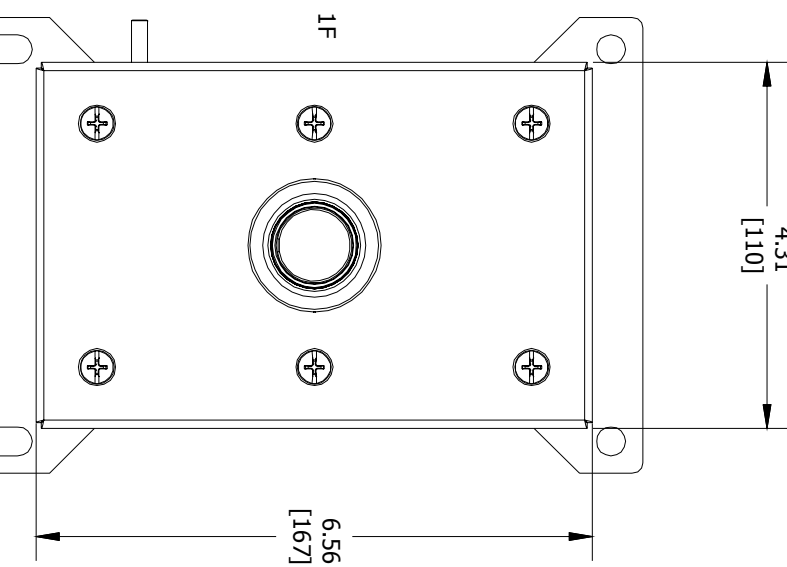
TOP VIEW

	<b>CAT. NO.</b> HKHMOD Series	<b>DATE CODE-S/N</b> ST. LOUIS, MO 63113
	HARSH & HAZARDOUS WWW.HARSHANDHAZARDOUS.COM	INDUSTRIAL CONTROL EQUIPMENT FOR USE IN ZONE CLASSIFIED HAZ. LOCS. CLASS I, ZONE 1, AEX de IIC T6...T4 Gb CLASS II, DIV. 2, GRRS. A,B,C,D; CLASS III, DIV. 1, GRRS. E,F,G (CANADA ONLY) CLASS III, TYPE 3/4/12/13; -50°C StAs+160°C

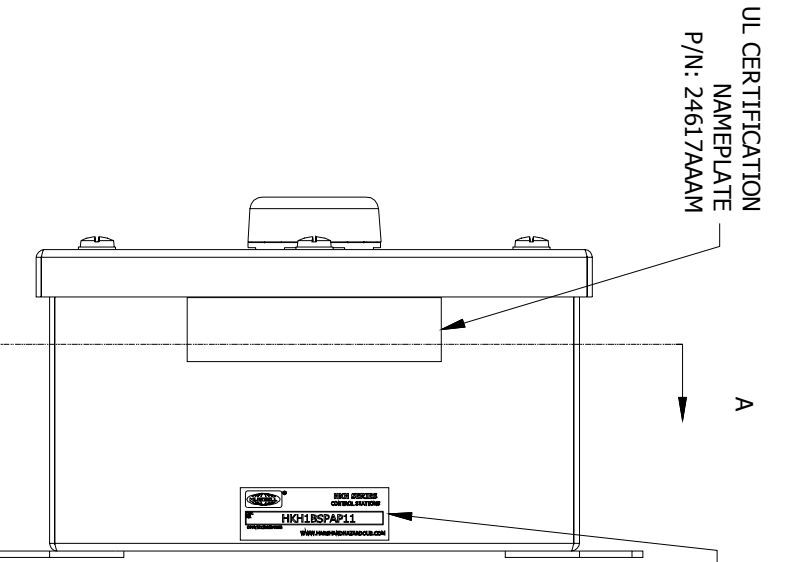
## CERTIFICATION NAME PLATES



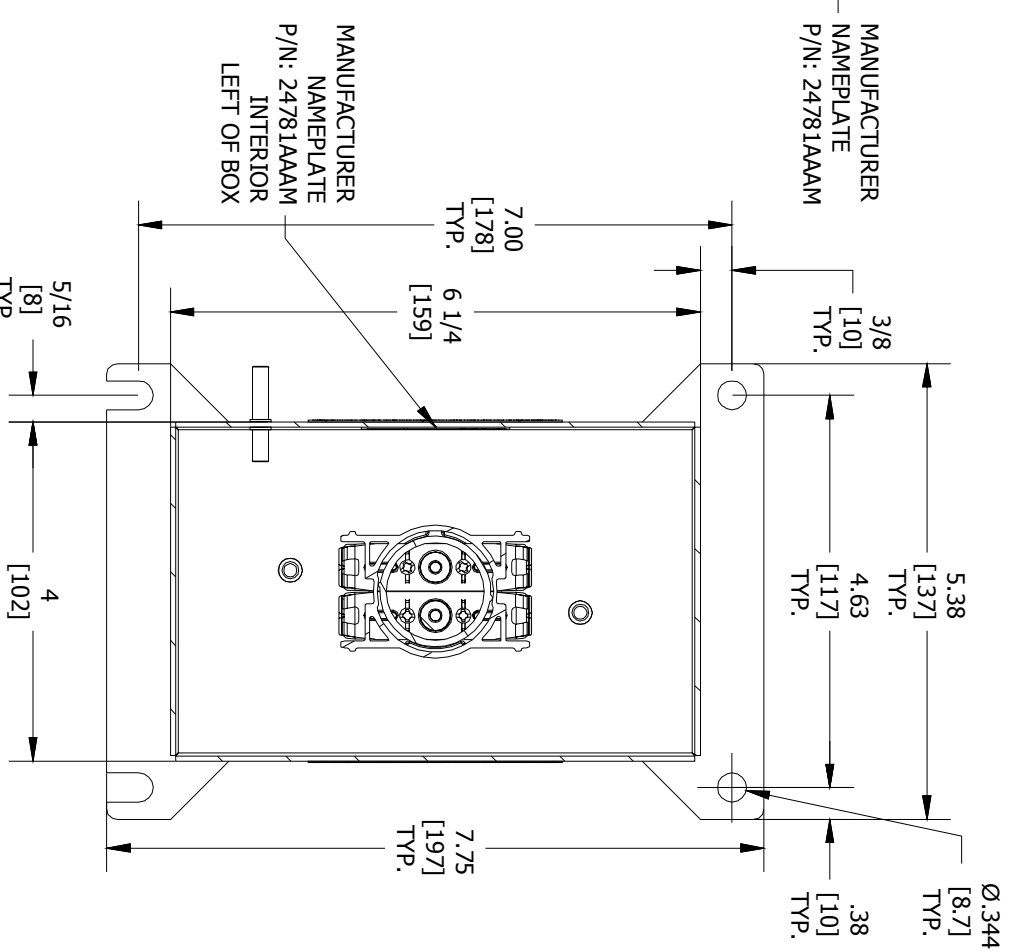
LEFT SIDE VIEW



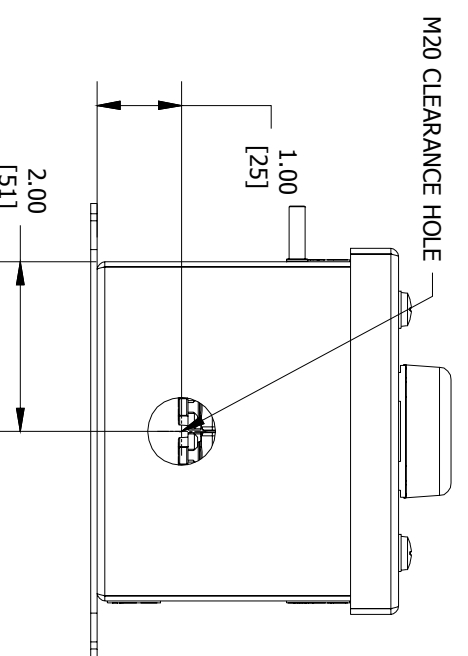
FRONT VIEW



RIGHT SIDE VIEW



SECTION A-A VIEW



BOTTOM VIEW

COMMENT:

SGN:

DATE:

ACCEPTANCE:

DRAWN BY:

DATE:

DWG NUMBER:

ENTRY NO. HUB/GLAND:

ITEM: N/A

COMMENT:

SGN:

DATE:

ACCEPTANCE:

DRAWN BY:

DATE:

DWG NUMBER:

ENTRY NO. HUB/GLAND:

ITEM: N/A

COMMENT:

SGN:

DATE:

ACCEPTANCE:

DRAWN BY:

DATE:

DWG NUMBER:

ENTRY NO. HUB/GLAND:

ITEM: N/A

COMMENT:

SGN:

DATE:

ACCEPTANCE:

DRAWN BY:

DATE:

DWG NUMBER:

ENTRY NO. HUB/GLAND:

ITEM: N/A

COMMENT:

SGN:

DATE:

ACCEPTANCE:

DRAWN BY:

DATE:

DWG NUMBER:

ENTRY NO. HUB/GLAND:

ITEM: N/A

MFG. NAME PLATE (REF.)

4

3

2

1

	<b>HKH SERIES</b> CONTROL STATIONS
<b>HKH1BSPAP11</b>	
COUNT/DATE CODE	
WWW.HARSHANDHAZARDOUS.COM	

REVISION	DATE	BY	DESCRIPTION
A	10-03-2016		HKH MODIFIED ENCLOSURE (HKH1BSPAP11)

ENTRY HUB/GLAND SELECTION CHART\*

ENTRY NO.	HUB/GLAND:
ENTRY 1	NONE

\*HUBS &amp; CABLE GLANDS ARE SHIPPED WITH ENCLOSURE