

BREAK OFF CONNECTING LINK THIS SIDE ONLY.

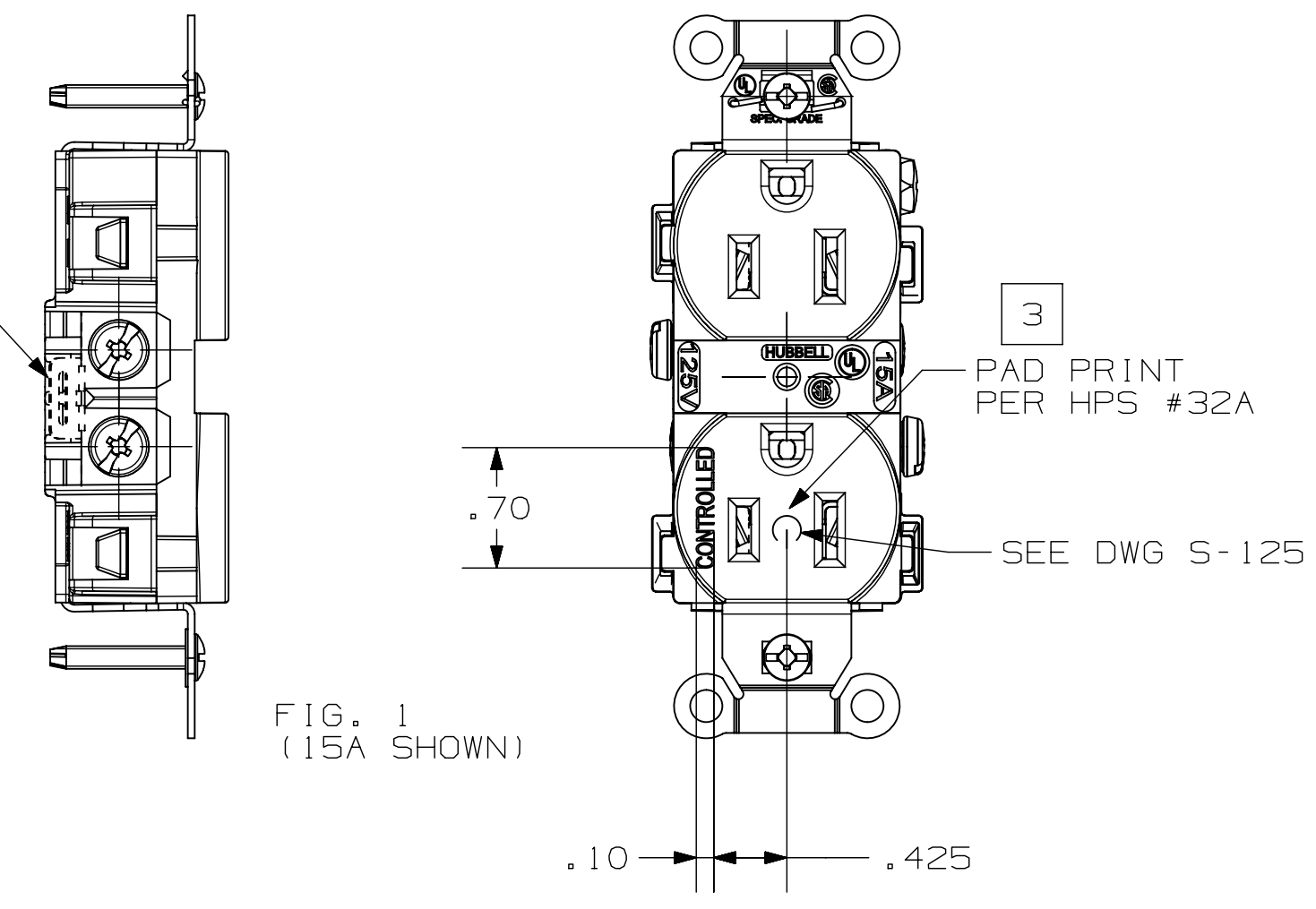


FIG. 1  
(15A SHOWN)

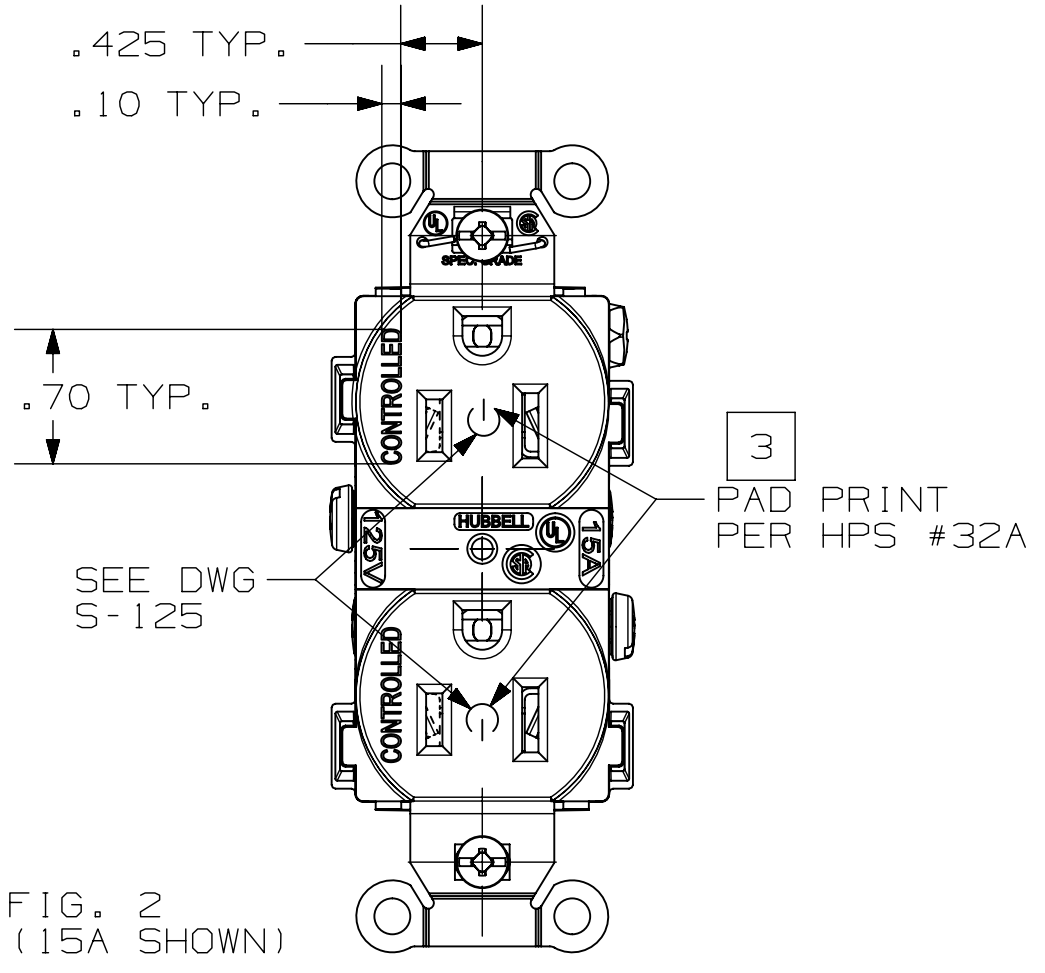


FIG. 2  
(15A SHOWN)

BREAK OFF CONNECTING LINK THIS SIDE ONLY.

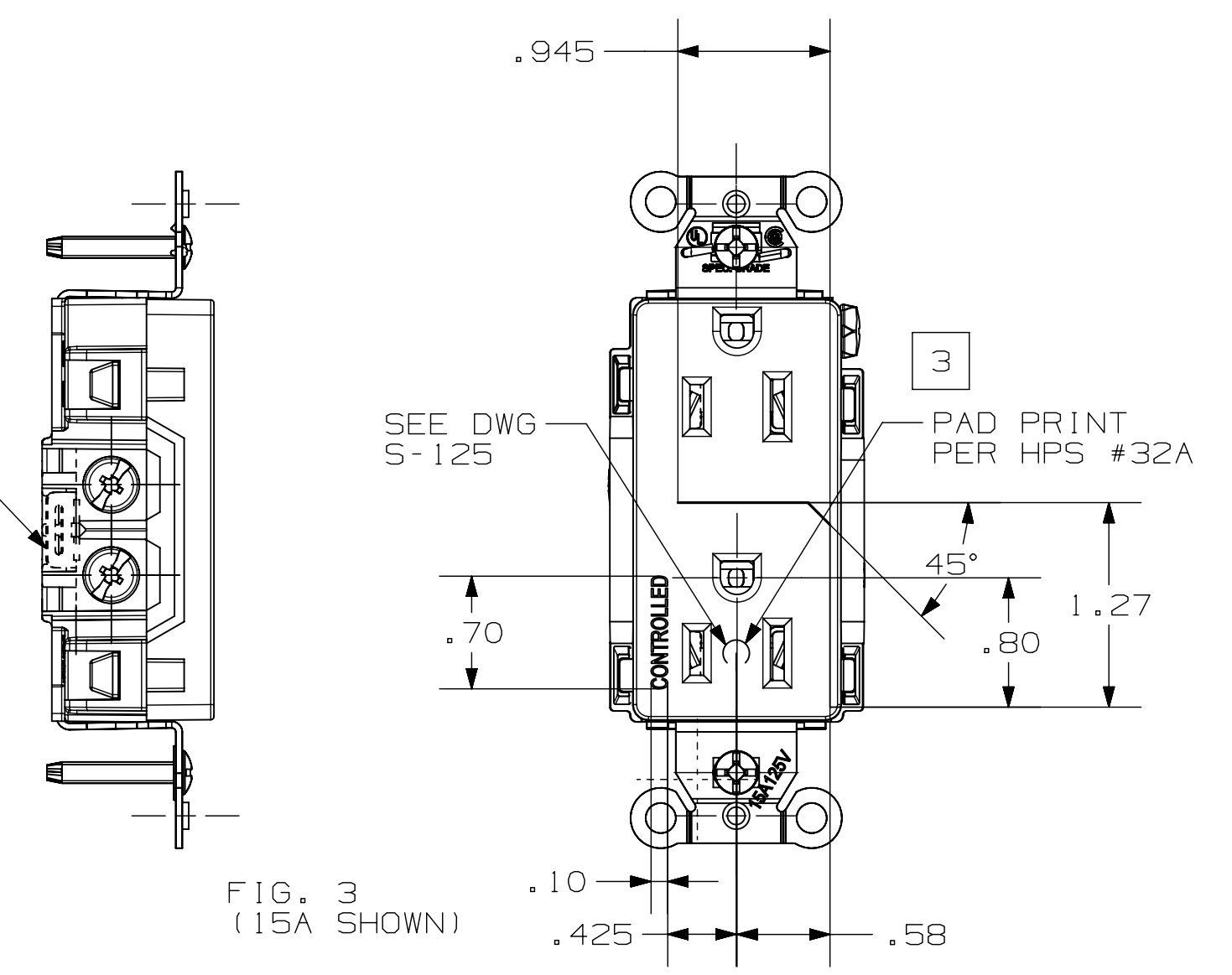


FIG. 3  
(15A SHOWN)

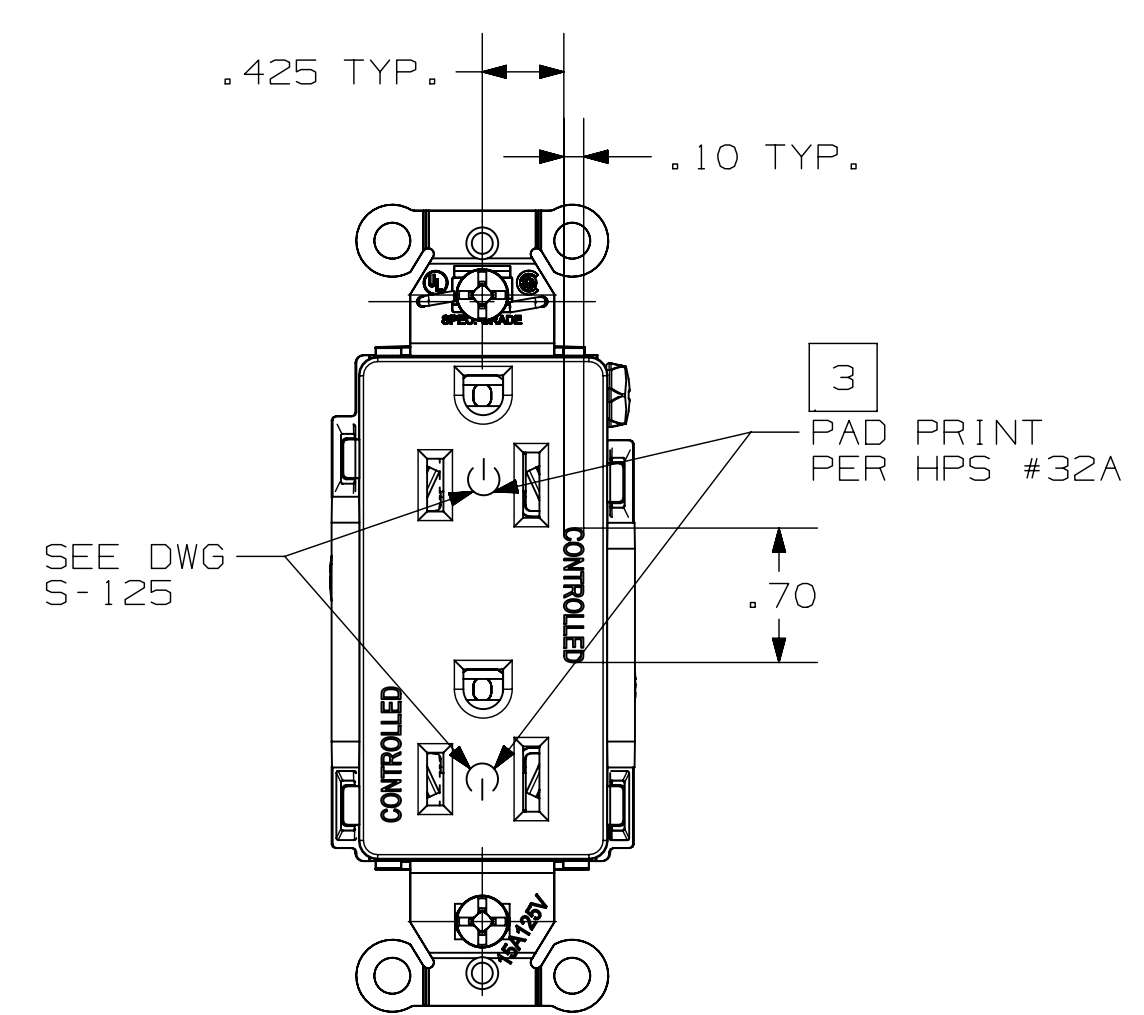
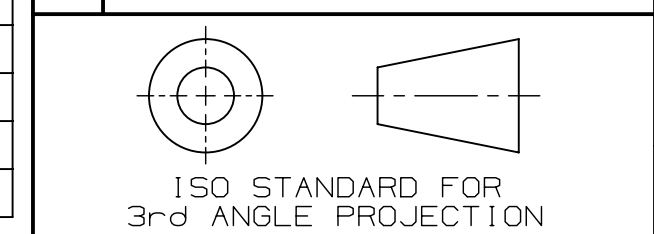


FIG. 4  
(15A SHOWN)

- NOTES (UNLESS OTHERWISE SPECIFIED):
1. INTERPRET THIS DRAWING IN ACCORDANCE WITH ANSI Y14.5M-1982.
  2.  $\triangle$  DENOTES CRITICAL FUNCTION OR PROCESS REQUIREMENT.
  3. CLEAN SURFACE WITH ISOPROPYL ALCOHOL PRIOR TO MARKING.
  4. FONT IS BROWALLIA NEW.

Cat. NO.	Ink Color	Fig.	Cat. NO.	Ink Color	Fig.
CBRS15C1BLK	Silver	1	BR15C1GN	Silver	1
CBRS15C1	Silver	1	BR15C1BLK	Silver	1
CBRS15C1GRY	Black	1	BR15C1	Silver	1
CBRS15C1I	Black	1	BR15C1GRY	Black	1
CBRS15C1LA	Black	1	BR15C1I	Black	1
CBRS15C1WHI	Black	1	BR15C1LA	Black	1
CBRS15C2BLK	Silver	2	BR15C1WHI	Black	1
CBRS15C2	Silver	2	BR15C2GN	Silver	2
CBRS15C2GRY	Black	2	BR15C2BLK	Silver	2
CBRS15C2I	Black	2	BR15C2	Silver	2
CBRS15C2LA	Black	2	BR15C2GRY	Black	2
CBRS15C2WHI	Black	2	BR15C2I	Black	2
DRS15C1BLK	Silver	3	BR15C2LA	Black	2
DRS15C1	Silver	3	BR15C2WHI	Black	2
DRS15C1GRY	Black	3	DR15C1GN	Silver	3
DRS15C1I	Black	3	DR15C1BLK	Silver	3
DRS15C1LA	Black	3	DR15C1	Silver	3
DRS15C1WHI	Black	3	DR15C1GRY	Black	3
DRS15C2BLK	Silver	4	DR15C1I	Black	3
DRS15C2	Silver	4	DR15C1LA	Black	3
DRS15C2GRY	Black	4	DR15C1WHI	Black	3
DRS15C2I	Black	4	DR15C2GN	Silver	4
DRS15C2LA	Black	4	DR15C2BLK	Silver	4
DRS15C2WHI	Black	4	DR15C2	Silver	4
CBRS20C1BLK	Silver	1	DR15C2GRY	Black	4
CBRS20C1	Silver	1	DR15C2I	Black	4
CBRS20C1GRY	Black	1	DR15C2LA	Black	4
CBRS20C1I	Black	1	DR15C2WHI	Black	4
CBRS20C1LA	Black	1	BR20C1GN	Silver	1
CBRS20C1WHI	Black	1	BR20C1BLK	Silver	1
CBRS20C2BLK	Silver	2	BR20C1	Silver	1
CBRS20C2	Silver	2	BR20C1GRY	Black	1
CBRS20C2GRY	Black	2	BR20C1I	Black	1
CBRS20C2I	Black	2	BR20C1LA	Black	1
CBRS20C2LA	Black	2	BR20C1WHI	Black	1
CBRS20C2WHI	Black	2	BR20C2GN	Silver	2
DRS20C1BLK	Silver	3	BR20C2BLK	Silver	2
DRS20C1	Silver	3	BR20C2	Silver	2
DRS20C1GRY	Black	3	BR20C2GRY	Black	2
DRS20C1I	Black	3	BR20C2I	Black	2
DRS20C1LA	Black	3	BR20C2LA	Black	2
DRS20C1WHI	Black	3	BR20C2WHI	Black	2
DRS20C2BLK	Silver	4	DR20C1GN	Silver	3
DRS20C2	Silver	4	DR20C1BLK	Silver	3
DRS20C2GRY	Black	4	DR20C1	Silver	3
DRS20C2I	Black	4	DR20C1GRY	Black	3
DRS20C2LA	Black	4	DR20C1I	Black	3
DRS20C2WHI	Black	4	DR20C1LA	Black	3
BR20C1BL	SILVER	1	DR20C1WHI	Black	3
BR20C2BL	SILVER	2	DR20C2GN	Silver	4
8300C1IV	BLACK	1	DR20C2BLK	Silver	4
8300C2WHI	BLACK	2	DR20C2	Silver	4
8300C1LA	BLACK	1	DR20C2GRY	Black	4
8300C1RED	SILVER	1	DR20C2I	Black	4
8300C2LA	BLACK	2	DR20C2LA	Black	4
8300C2RED	SILVER	2	DR20C2WHI	Black	4
8300C2IV	BLACK	2	DR20C2R	SILVER	4
8300C1WHI	BLACK	1	BR20C1R	SILVER	1
			BR20C2R	SILVER	2

SUB	REVISIONS
1	2/16/15 "X" REMOVED; LAST "X" REV. WAS "X-0" PER DCN 21031. MYA DJP
2	8/3/15 UPDATED CHART WITH BRYANT CATALOG NUMBERS PER DCN 21610. MYA DJP
3	1/5/17-UPDATED TABLE WITH BR20C1BL AND BR20C2BL CAT. NUMBERS PER DCN 22815. MYA DJP
4	5/5/17 FIG. 1 MOVED PAD PRINT POWER SYMBOL FROM A FACE TO B FACE. PER DCN 23068 SPN DJP
5	1/23/18-IN FIGURES, RELOCATED THE WORD CONTROLLED AND THE SYMBOL, ADDED CALLOUT SEE DWG S-125 AND REMOVED NOTE 4 FLAG. IN NOTE 4 FONT IS BROWALLIA... WAS PAD PRINTING LOCATED... PER DCN 23521. MYA DJP
6	8/8/19 ADDED CAT. 8300C1IV. PER DCN 190808111423 SPN DJP
7	8/8/19 ADDED CAT. 8300C2WHI TO TABLE PER DCN 191002135110. MYA DJP
8	12/3/19 ADDED CATALOG NO. 8300C1LA TO TABLE PER DCN 191203071940. RM DJP
9	4/23/20 ADDED CATALOG NO. 8300C1RED TO TABLE PER DCN 200423123155. RM WOV
10	6/24/20 ADDED CATALOG NO.s BR20C1R & BR20C2R TO TABLE PER DCN 200623141632. RM WOV
11	10/01/20 ADDED CATALOG NO.s 8300C2LA, 8300C2RED, 8300C2IV & 8300C1WHI TO TABLE PER DCN 200928000972 RM DJP
12	4/08/21 ADDED CATALOG NO. DR20C2R TO TABLE PER DCN 210408006950 RM DJP



DO NOT SCALE DRAWING USE DIMENSIONS ONLY

IN ACCEPTING OUR DRAWINGS OR BLUEPRINTS FOR QUOTATION OR OTHER PURPOSES, YOU AGREE NOT TO DISCLOSE TO OTHERS THE IDEAS, INFORMATION OR DESIGNS THEREIN SHOWN, AND THAT YOU WILL MAKE NO USE OF OUR DRAWINGS OR BLUEPRINTS OR OF THE IDEAS, INFORMATION OR DESIGNS THEREIN SHOWN WITHOUT OUR PERMISSION.

MATERIAL SPECIFICATIONS

MATERIAL: / /

FINISH: / /

TITLE  
CONTROLLED RECEPTACLE MARKING & ASSY

TOLERANCES UNLESS OTHERWISE SPECIFIED .XX = ±.01 .XXX = ±.005 .XXXX = ±.0025	WIRING DEVICE-KELLEMS HUBBELL INCORPORATED SHELTON, CT
PROJECT NO. FM7642	DR. BY MYA APP. BY DJP TR. BY SCALE 1:1 CHK. BY DJP DATE 2/16/15