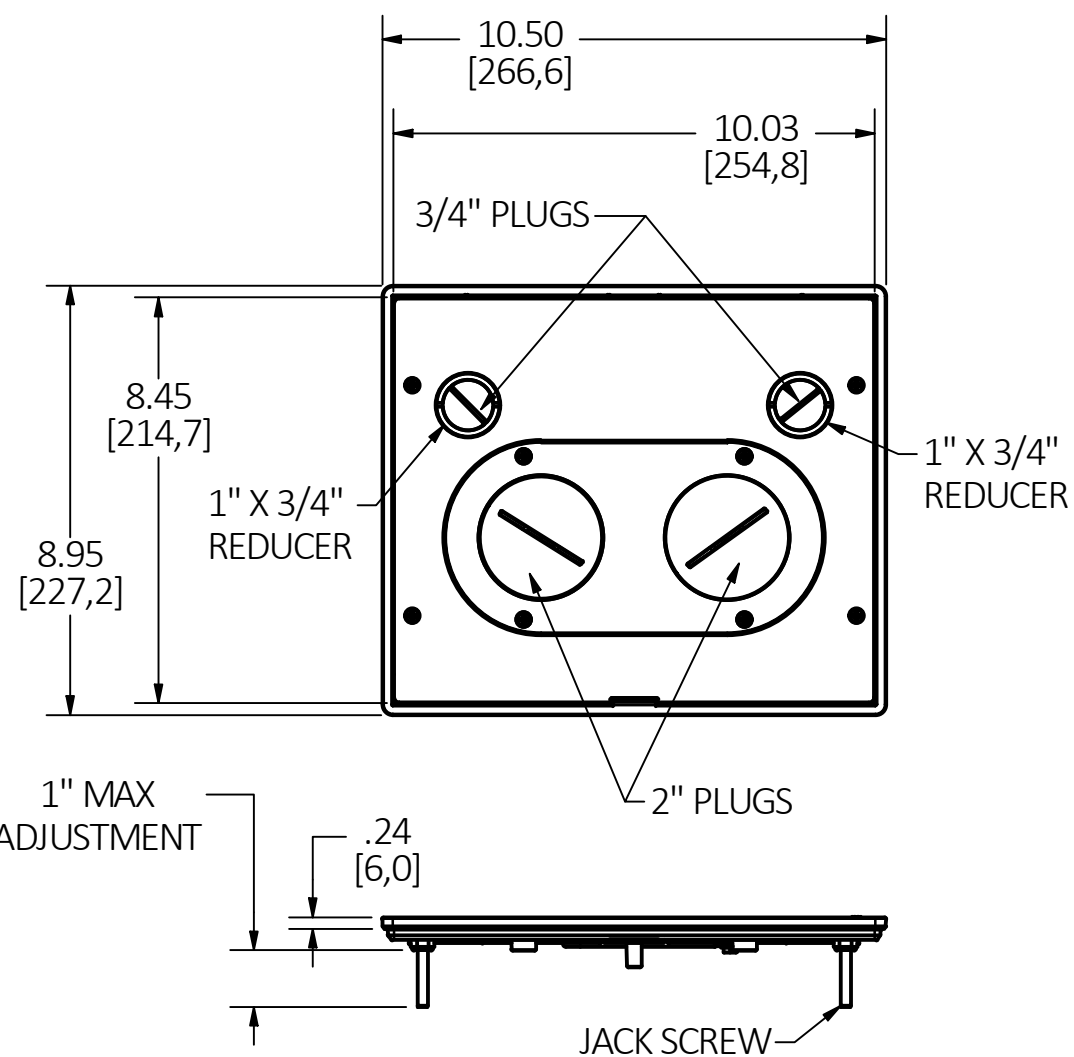
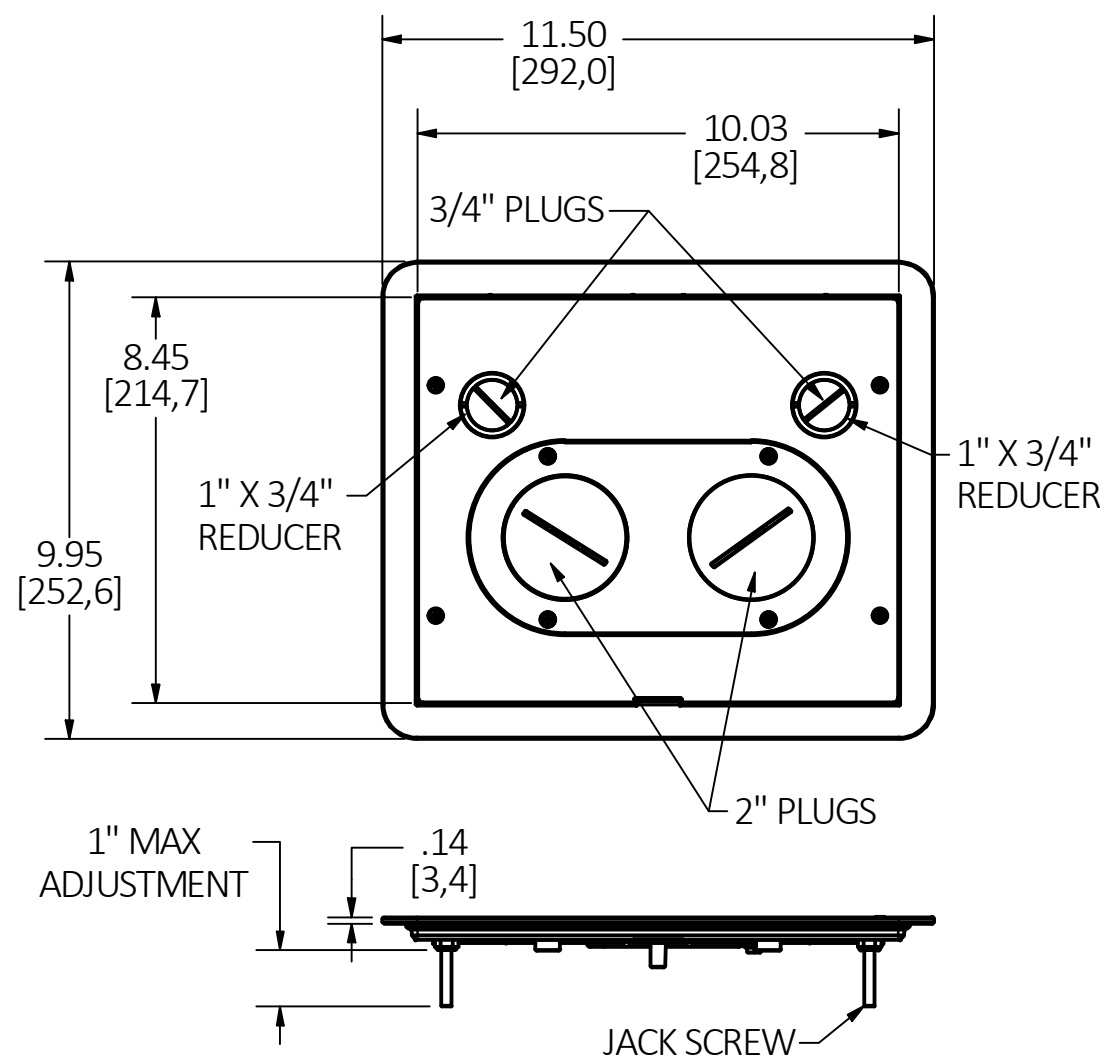
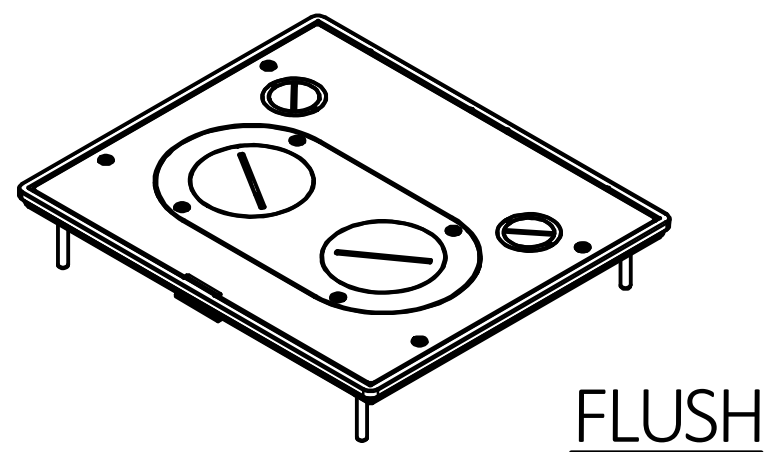
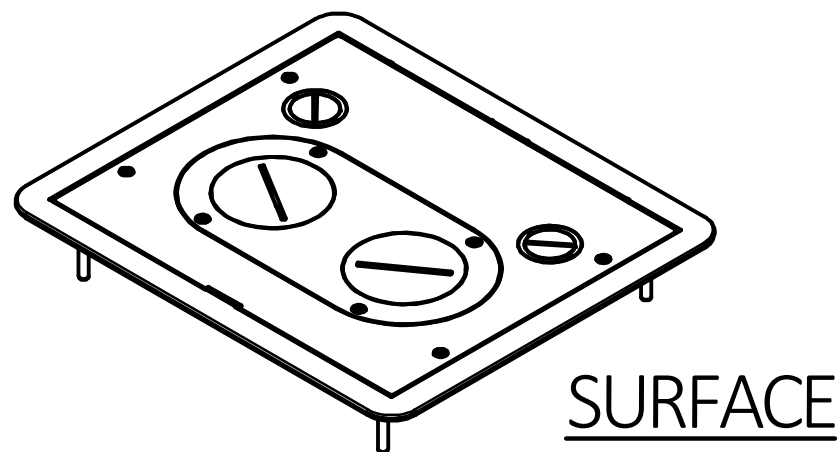


M-14257 1



- NOTES:
1. ALL DIMENSIONS ARE IN INCHES AND [MILLIMETERS].
  2. DIMENSIONS SHOWN ON THIS DRAWING ARE NOMINAL VALUES FOR GENERAL USE ONLY.
  3. PRODUCT IS cULus LISTED.

SURFACE	
CATALOG NO.	COLOR
610GCFFCVRALU	ALUMINUM
610GCFFCVRBK	BLACK
610GCFFCVRBRS	BRASS
610GCFFCVRBRZ	BRONZE
610GCFFCVRNK	NICKEL

FLUSH	
CATALOG NO.	COLOR
610GTFFCVRALU	ALUMINUM
610GTFFCVRBK	BLACK
610GTFFCVRBRS	BRASS
610GTFFCVRBRZ	BRONZE
610GTFFCVRNK	NICKEL

LIST OF PARTS

DESCRIPTION	MATERIAL	FINISH
FLANGE	ALUMINUM	POWDER COAT
MAIN COVER	ALUMINUM	POWDER COAT
LOW VOLTAGE COVER	ALUMINUM	POWDER COAT
GASKETS	CLOSED CELL FOAM	
JACK SCREW	STEEL WIRE	ZINC PLATED
JACK SCREW NUT	CRS	ZINC PLATED
COVER SCREWS	CRS	ZINC PLATED
2" PLUG	ALUMINUM	POWDER COAT
1"-3/4" REDUCER	ALUMINUM	POWDER COAT
3/4" PLUG	ZINC	POWDER COAT
GROUND WIRE	COPPER	

1	RELEASED PER DCN200909000435	AD	9/9/20
REV	DESCRIPTION	APP	DATE

THE DESIGN AND DIMENSIONS OF THE PRODUCT SHOWN ON THIS DRAWING ARE SUBJECT TO CHANGE WITHOUT NOTICE. DIMENSIONS ARE IN INCHES [mm].

TITLE  
6 & 10 GANG CONCRETE FLOOR BOX  
FURNITURE FEED COVERS  
SURFACE / FLUSH

	WIRING DEVICE-KELLEMS HUBBELL INCORPORATED SHELTON, CT	
	DR. BY AD	SCALE 1/4
TOLERANCES UNLESS OTHERWISE SPECIFIED .XX = ±.01 .XXX = ±.005 ANGLE TOL. ±2°	CHK. BY	DATE 7/16/20

DIMENSION SHEET FOR CAT. NO. SEE TABLES

B M-14257

1