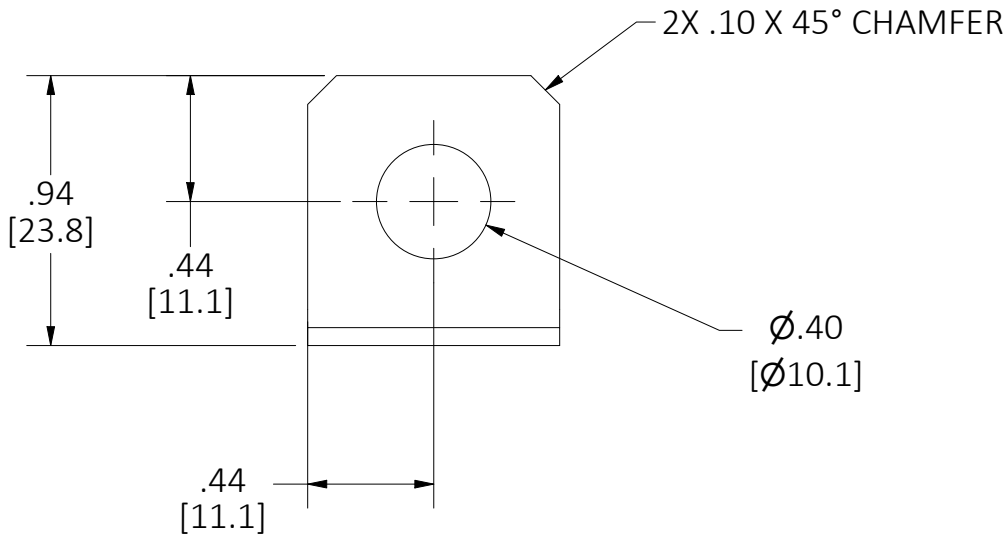
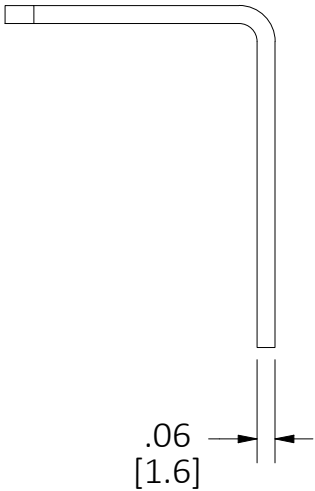
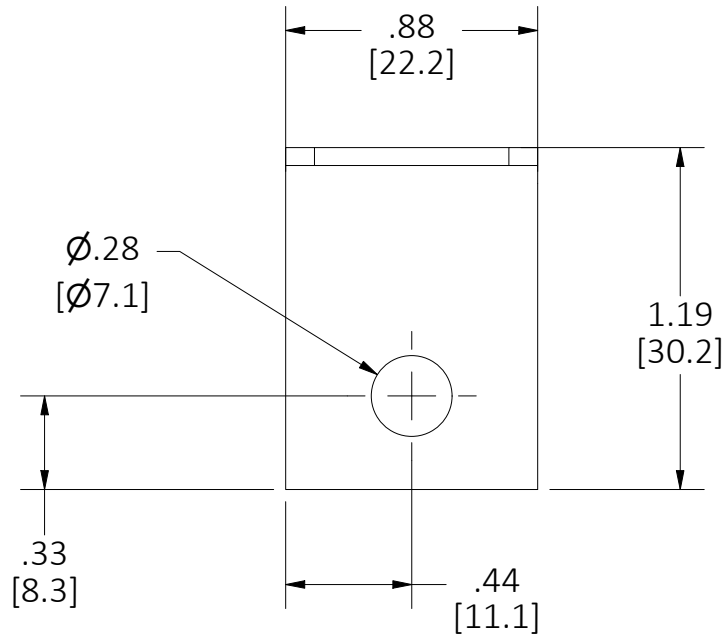


M-14663

1

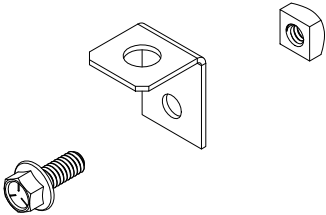


NOTES:

1. ALL DIMENSIONS ARE IN INCHES AND [MILLIMETERS].
2. THIS KIT IS COMPATIBLE WITH 1' X 2' & 2' X 2' RECESSED CEILING BOXES: HRCB12WHT; HRCB12PWHT; HRCB22WHT; & HRCB22PWHT.
3. BRACKETS CAN ACCOMMODATE UP TO 3/8" DIAMETER THREADED ROD (NOT INCLUDED).
4. KIT CONTAINS 4X BRACKETS, SCREWS, & NUTS.
5. REFERENCE INSTALLATION INSTRUCTION PD-3039.

LIST OF PARTS

DESCRIPTION	MATERIAL	FINISH
BRACKET	STEEL	ZINC
1/4-20 x 5/8" HEX HEAD CAP SCREW	STEEL	ZINC
1/4-20 SQUARE NUT	STEEL	ZINC



ISOMETRIC VIEW

1	DRAWING RELEASE PER EC 230412029420 TRS		04/11/23
REV	DESCRIPTION	APP	DATE

THE DESIGN AND DIMENSIONS OF THE PRODUCT SHOWN ON THIS DRAWING ARE SUBJECT TO CHANGE WITHOUT NOTICE. DIMENSIONS ARE IN INCHES [mm].

TITLE
HRCB THRD THREADED ROD MNT KIT



WIRING DEVICE-KELLEMS  
HUBBELL INCORPORATED  
SHELTON, CT

TOLERANCES UNLESS OTHERWISE SPECIFIED .XX = ± .01 .XXX = ± .005 ANGLE TOL. ±2°	DR. BY CHK. BY	DRM/TS SW	SCALE DATE	1.5 : 1 03/07/23
---	-------------------	--------------	---------------	---------------------