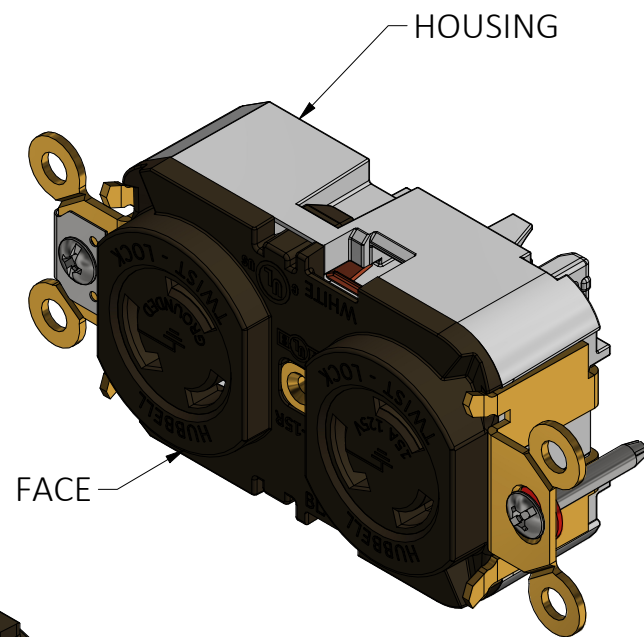
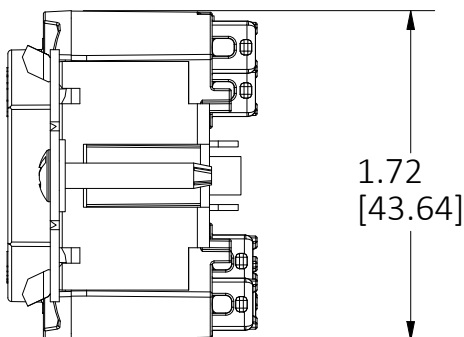


1

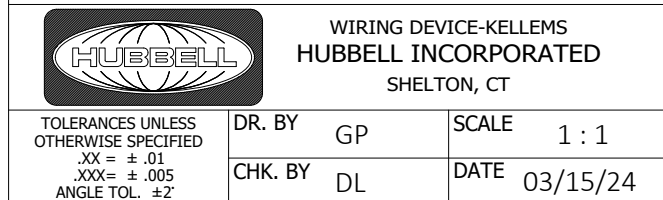






1. DIMENSIONS ARE IN INCHES [mm].
2. ALL DEVICES ARE cULus LISTED AND MEET THE REQUIREMENTS OF FED. SPEC. W-C-596G/GEN.
3. WIRING TERMINAL ACCOMMODATION: 14 AWG - 10 AWG STRANDED OR SOLID COPPER WIRE.
4. ASSEMBLY SCREWS ARE PHILLIPS/ROBERTSON HEAD.
5. NEMA DESIGNATION MARKED ON THE FACE OF THE RECEPTACLE.

CATALOG NO. HBL4700ST
(NOT SHOWN TO SCALE)

THE DESIGN AND DIMENSIONS OF THE
PRODUCT SHOWN ON THIS DRAWING ARE
SUBJECT TO CHANGE WITHOUT NOTICE.
DIMENSIONS ARE IN INCHES [mm].

TITLE
EdgeConnect™ DUPLEX RECEPTACLE



NEMA NO.	RATING	POLE/WIRE	CAT. NO.	NEMA CONTACT CONFIGURATION
L5-15R	15A 125V	2P/3W GROUNDING	HBL4700ST	
L6-15R	15A 250V	2P/3W GROUNDING	HBL4550ST	
L7-15R	15A 277V	2P/3W GROUNDING	HBL4750ST	
L5-15R	15A 125V	IG 2P/3W GROUNDING	IG4700AST	

CAGE CODE 74545