

M-10061

3

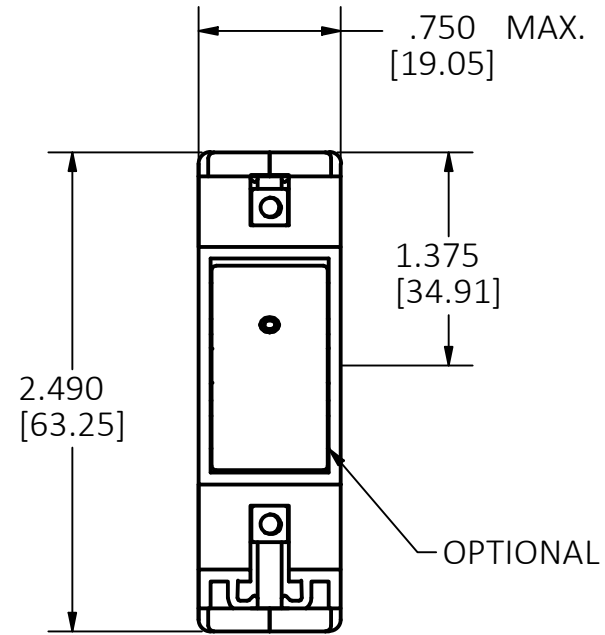
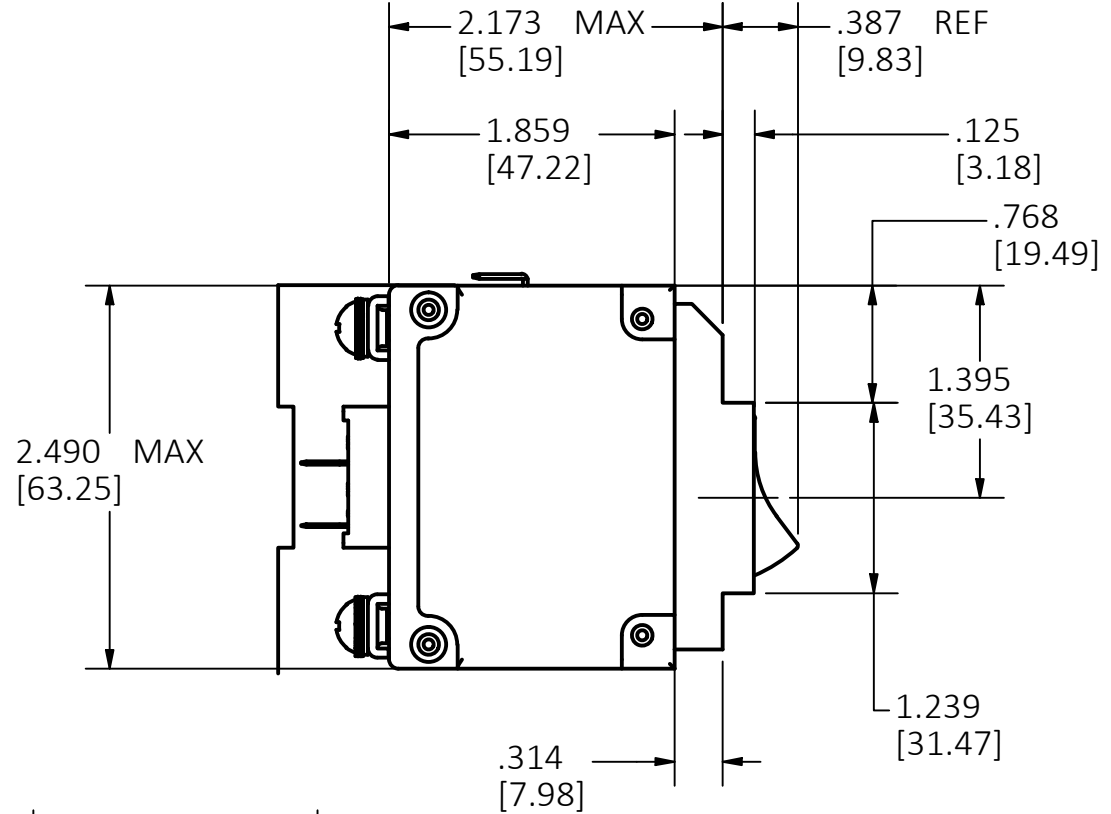
TABLE

CATALOG NUMBER	AMP	VOLTS AC	POLE
GFSMBCB120151P	15	120	1
GFSMBCB120161P	16	120	1
GFSMBCB120201P	20	120	1
GFSMBCB120231P	23	120	1
GFSMBCB120251P	25	120	1
GFSMBCB120271P	27	120	1
GFSMBCB120301P	30	120	1
GFSMBCB120351P	35	120	1
GFSMBCB120401P	40	120	1
GFSMBCB120451P	45	120	1
GFSMBCB120501P	50	120	1
GFMDCB120151P	15	120	1
GFMDCB120161P	16	120	1
GFMDCB120201P	20	120	1
GFMDCB120231P	23	120	1
GFMDCB120251P	25	120	1
GFMDCB120271P	27	120	1
GFMDCB120301P	30	120	1
GFMDCB120351P	35	120	1
GFMDCB120401P	40	120	1
GFSMBCB120451P	45	120	1
GFSMBCB120501P	50	120	1
GFSMBCB120152P	15	120	2
GFSMBCB120162P	16	120	2
GFSMBCB120202P	20	120	2
GFSMBCB120232P	23	120	2
GFSMBCB120252P	25	120	2
GFSMBCB120272P	27	120	2
GFSMBCB120302P	30	120	2
GFSMBCB120352P	35	120	2
GFSMBCB120402P	40	120	2
GFSMBCB120452P	45	120	2
GFSMBCB120502P	50	120	2
GFSMBCB240152P	15	240	2
GFSMBCB240202P	20	240	2
GFSMBCB240252P	25	240	2
GFSMBCB240302P	30	240	2
GFSMBCB240352P	35	240	2
GFSMBCB240402P	40	240	2
GFSMBCB240452P	45	240	2
GFSMBCB240502P	50	240	2
GFMDCB120451P	45	120	1
GFMDCB120501P	50	120	1
GFMDCB12052P	5	120	2
GFMDCB120102P	10	120	2
GFMDCB120152P	15	120	2
GFMDCB120162P	16	120	2
GFMDCB120202P	20	120	2
GFMDCB120232P	23	120	2
GFMDCB120252P	25	120	2
GFMDCB120272P	27	120	2
GFMDCB120302P	30	120	2
GFMDCB120352P	35	120	2
GFMDCB120402P	40	120	2
GFMDCB120452P	45	120	2
GFMDCB120502P	50	120	2
GFMDCB240152P	15	240	2
GFMDCB240202P	20	240	2
GFMDCB240252P	25	240	2
GFMDCB240302P	30	240	2
GFMDCB240352P	35	240	2
GFMDCB240402P	40	240	2
GFMDCB240452P	45	240	2
GFMDCB240502P	50	240	2
GFSMBCB120240252P	25	120/240	2
GFSMBCB120240162P	16	120/240	2
GFSMBCB120240232P	23	120/240	2
GFSMBCB120240272P	27	120/240	2
GFSMBCB120240402P	40	120/240	2

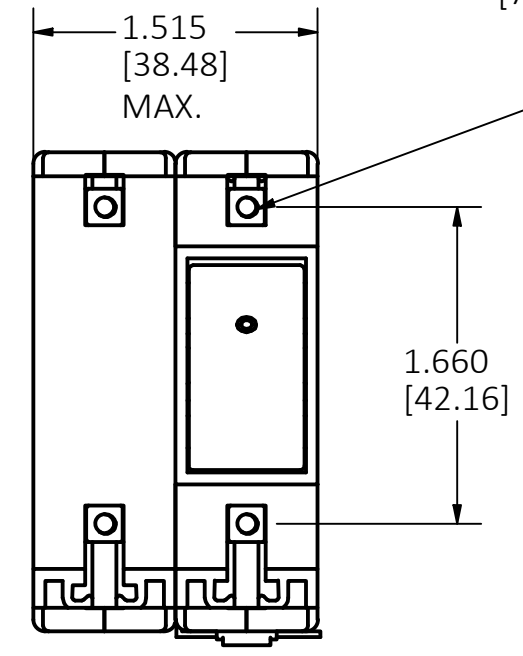
LIST OF PARTS

DESCRIPTION	MATERIAL	FINISH
-------------	----------	--------

DIMENSION SHEET FOR CAT. NO.
SEE TABLE



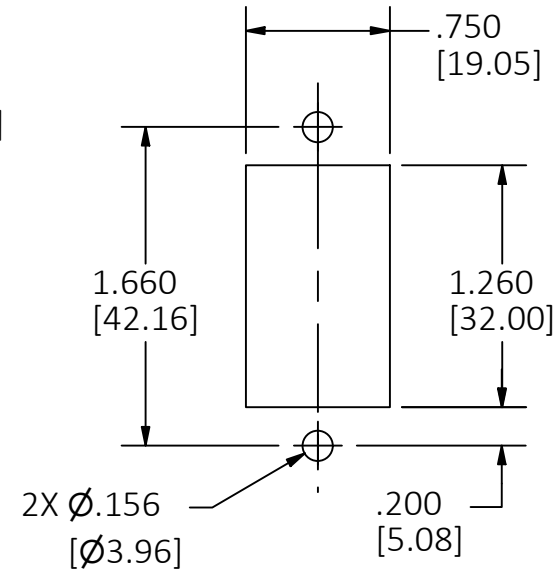
SINGLE POLE



TWO POLE

(Optional handle may be in pole 2 instead of pole 1.)

6-32 THD, MOUNTING
M3 ISO THD OPTIONAL
(TYPICAL)



Panel Mounting Detail

Mounting Detail Tolerance:
±.005 [.13] unless noted

3	UPDATED DRAWING FORMAT, IN TABLE ADDED CAT# GFSMBCB120240162P, GFSMBCB120240232P, GFSMBCB120240272P & GFSMBCB120240402P PER DCN# 220418019241	DRM	04-18-22
---	--------------------------------------------------------------------------------------------------------------------------------------------------------------------	-----	----------

2	ADDED CAT #GFSMBCB120240252P PER DCN# 211217015441	D.LI	12-17-21
---	----------------------------------------------------------	------	----------

1	INITIAL RELEASE PER DCN 13040	SL	4-5-06
---	----------------------------------	----	--------

REV	DESCRIPTION	APP	DATE
-----	-------------	-----	------

THE DESIGN AND DIMENSIONS OF THE
PRODUCT SHOWN ON THIS DRAWING ARE
SUBJECT TO CHANGE WITHOUT NOTICE.
DIMENSIONS ARE IN INCHES [mm].

TITLE
5 THRU 50A. 120 & 240 VAC
1, 2 & 3 POLE
CIRCUIT BREAKER

HUBBELL WIRING DEVICE-KELLEMS
HUBBELL INCORPORATED
SHELTON, CT

TOLERANCES UNLESS OTHERWISE SPECIFIED .XX = ± .01 .XXX = ± .005 ANGLE TOL. ±2'	DR. BY CHK. BY	DRM DDL	SCALE DATE	NONE 04-18-22
-----------------------------------------------------------------------------------------	-------------------	------------	---------------	------------------

B

M-10061

3