

M-13870

1

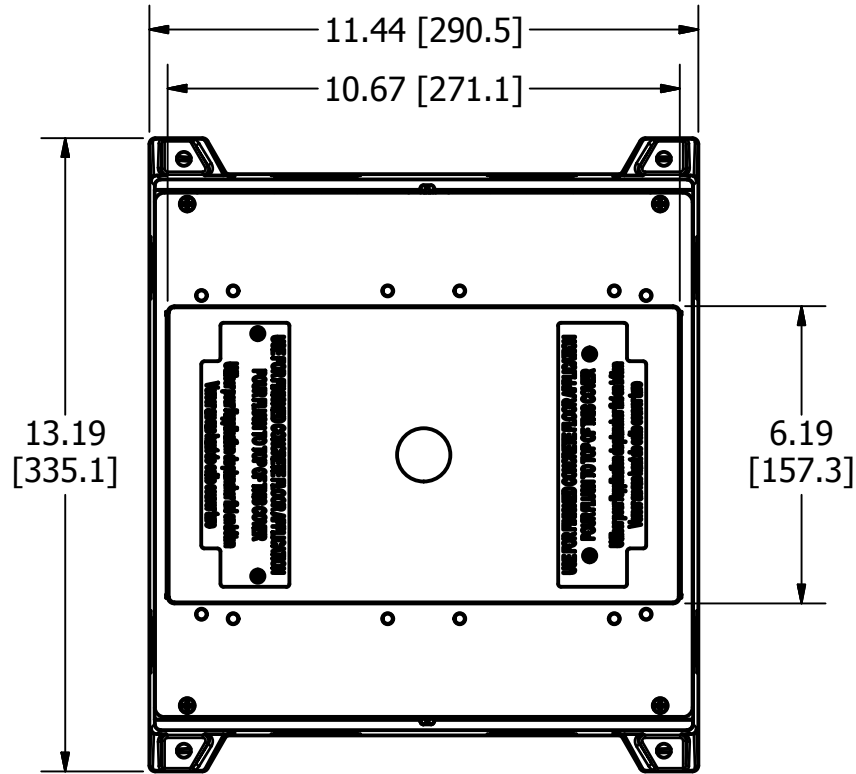
THREADED ACCESS HOLES

LOCATION	QUANTITY	SIZE
ENDS	2/END	1-1/2" NPT
SIDES	2/SIDE	3/4" NPT

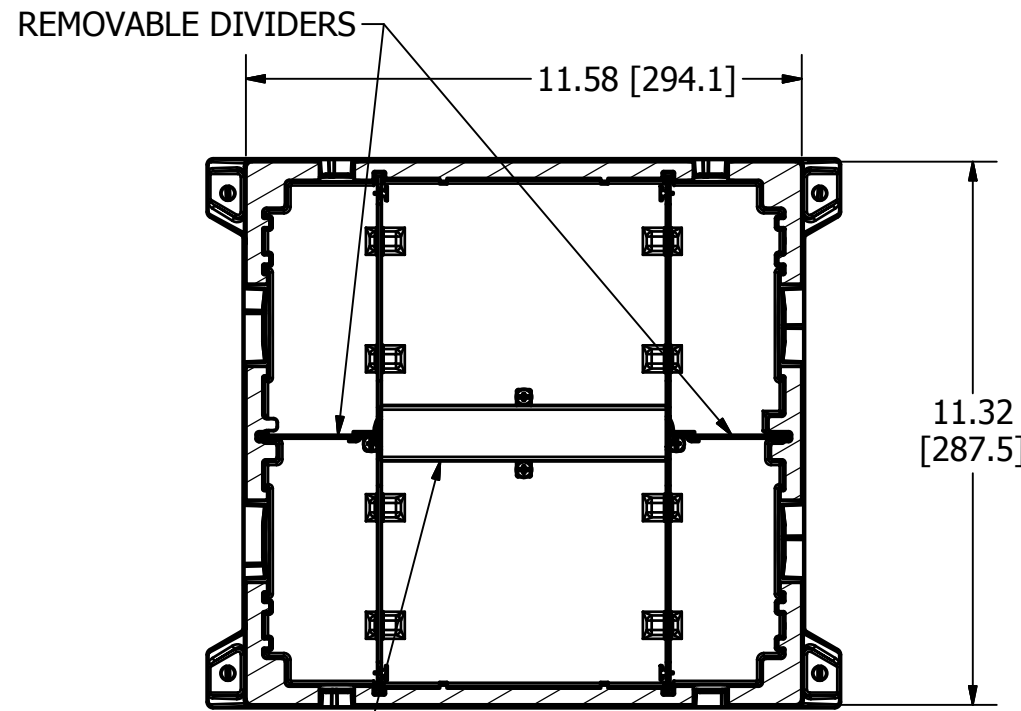
LIST OF PARTS

DESCRIPTION	MATERIAL	FINISH
BOX BASE	CAST IRON	POWDER COAT
DIVIDERS	THERMOPLASTIC	
TOP MOUNTING ASSY	14 GA. STEEL	ZINC
GROUND WIRES	COPPER	
CLOSURE PLUGS	STAINLESS STEEL	
WIRING CHANNEL	16 GA. STEEL	ZINC
REMOVABLE DIVIDERS	THERMOPLASTIC	
FASTENERS	STEEL	ZINC
FLUSH TEMP COVER	16 GA. STEEL	ZINC
RAISED TEMP COVER	THERMOPLASTIC	YELLOW

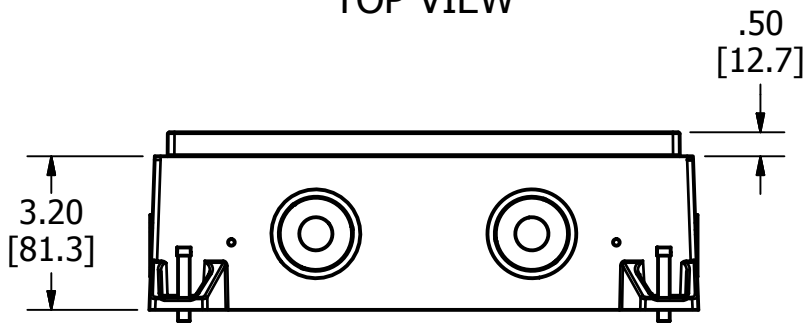
DIMENSION SHEET FOR CAT. NO. CFB4G30CI



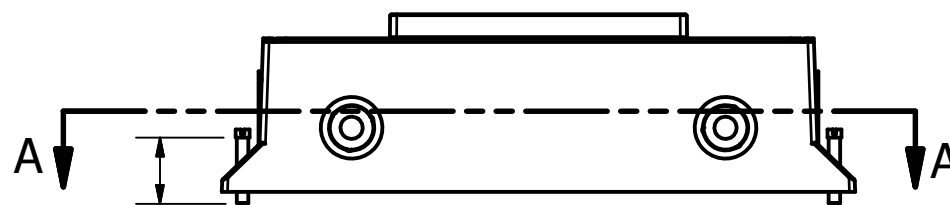
TOP VIEW



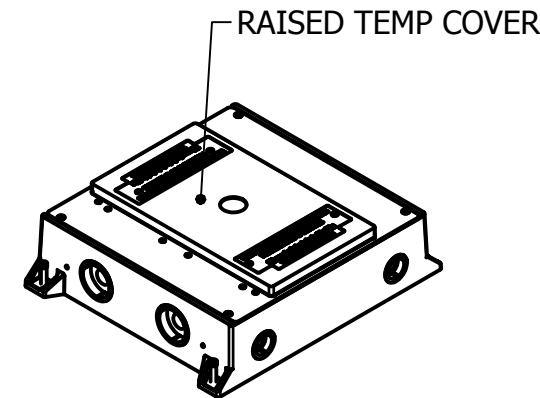
SECTION A-A
VIEW THROUGH BOX BELOW TOP



END VIEW



4X 1.38 [35.1]
LEVELING SCREW
SIDE VIEW



ISOMETRIC

NOTES:

- ALL DIMENSIONS ARE IN INCHES AND [MILLIMETERS].
- PRODUCT IS cULus LISTED. COMPLIES WITH UL 514A.
- EACH GANG SUPPLIED WITH 6" [152.4] 12 GA. AWG GROUND PIGTAIL.
- MINIMUM CONCRETE POUR: 3.20" [81.3].
- WIRING CHAMBER VOLUMES (RECESSED COVER) : (4) 30.0 IN³ [491.7 CM³].
- WIRING CHANNEL AREA: (2) .40 IN² [261 MM²].
- WIRING CHAMBER VOLUMES (FURNITURE FEED) : (2) 118 IN³ [1934 CM³].

1	RELEASED PER DCN 23642	SBW	3/19/18
REV	DESCRIPTION	APP	DATE

THE DESIGN AND DIMENSIONS OF THE PRODUCT SHOWN ON THIS DRAWING ARE SUBJECT TO CHANGE WITHOUT NOTICE. DIMENSIONS ARE IN INCHES [mm].

TITLE
CONCRETE FLOOR BOX, 4 GANG FOR RECTANGULAR COVER, CAST



WIRING DEVICE-KELLEMS
HUBBELL INCORPORATED
SHELTON, CT

TOLERANCES UNLESS OTHERWISE SPECIFIED .XX = ± .01 .XXX = ± .005 ANGLE TOL. ±2'	DR. BY SBW	SCALE 1/4
	CHK. BY	DATE 3/5/2018

B

M-13870

1