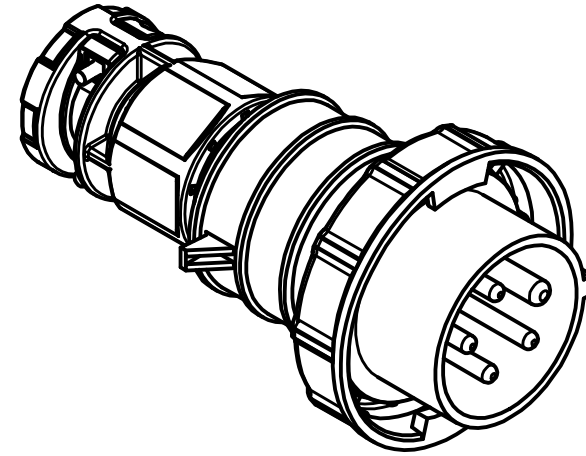
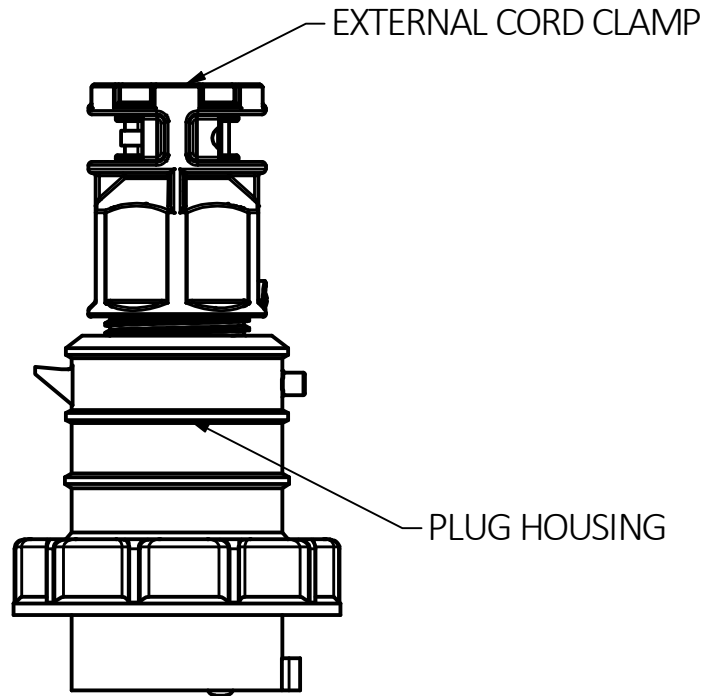
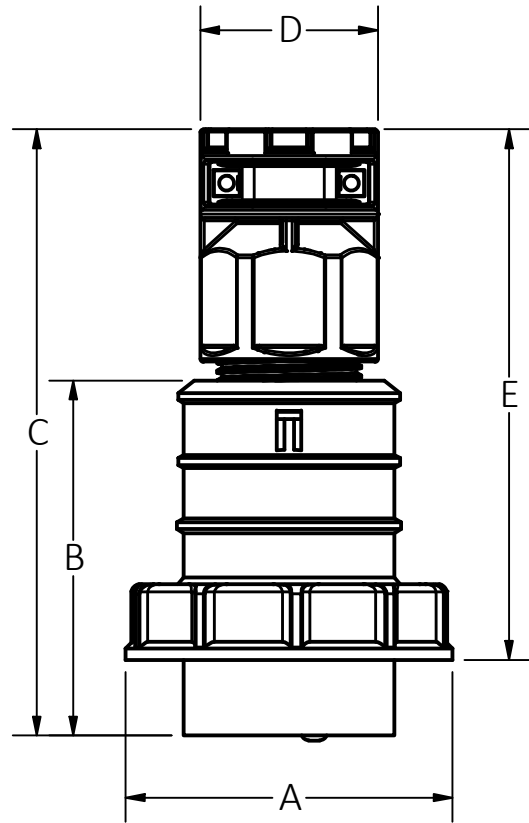


M-14030

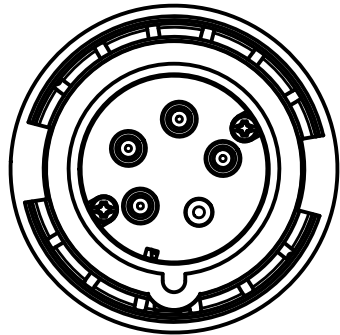
3



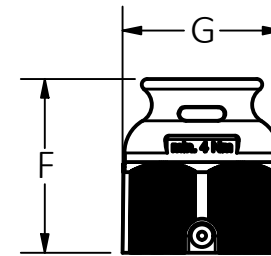
16A/20A 4W WATERTIGHT PLUG SHOWN

NOTES:

1. UL LISTED STANDARD 1682, CSA CERTIFIED C22.2 NO. 182.1 - 1988 AND COMPLY TO VDE AND CE REQUIREMENTS. COMPLIES WITH IEC 60309-1 AND IEC 60309-2 STANDARDS. ENVIRONMENTAL RATING: SEE TABLES ON SHEET 2 & 3
2. DIMENSIONS ARE DISPLAYED ON SHEET 2 FOR cULus LISTED AND VDE RATED CAT NO.'S AND ON SHEET 3 FOR DUAL RATED CAT NO.'S.
3. FOR CABLE RANGES SEE TABLE.



CABLE RANGES			
UL		VDE	
AMPERE	MIN/MAX OD	AMPERE	MIN/MAX OD
20	.370/.710	16	.360/.827
30	.565/1.150	32	.565/1.161
60	.970/1.450	63	.970/1.450
100	1.050/1.880	125	1.220/1.890



STD. GLAND NUT USED WITH VDE CAT. NO.'s IN.[mm]

STANDARD GLAND NUT DIMS.		
AMPERE	"F"	"G"
20A 3P, 4P	1.59[41]	1.71[44]
20A 5P	1.81[46]	1.90[48]
30A	2.05[52]	2.28[58]
60A	2.44[62.0]	2.68[68]
100A	3.04[77.3]	3.25[83]

NOTE: STD. GLAND NUTS COMPLY TO VDE REQUIREMENTS PER IEC60309-1 AND IEC 60309-2 STANDARDS.

LIST OF PARTS

DESCRIPTION	MATERIAL	FINISH
PLUG HOUSING	PBT	
EXTERNAL CORD CLAMP	PBT/PC	
PIN HOLDER	NYLON GF	
CONTACT PINS	BRASS	
LOCKING RING	PBT/PC	
CONTACT CARRIER	NYLON GF	
GROMMET	TPE	
ASSEMBLY SCREWS	ST. STEEL	
GLAND NUT	PBT/PC	

3	12/9/19 ADDED GLAND NUT TO PARTS LIST; CREATED TABLE FOR CABLE RANGES; REMOVED CABLE RANGES FROM NOTE 3 AND REFERENCED CABLE RANGE TABLE; CHANGED TITLE TO INCLUDE "100A" AND "125A"; CHANGED LEADER TEXT FOR EXTERNAL CORD CLAMP PER EC 200110070227 MJV	12/9/19
---	---	---------

2	06/25/19 REVISED. CHANGED COLUMNS C&E FOR VDE ONLY. PER DCN 190625105816	06/25/19
---	--	----------

REV	DESCRIPTION	APP	DATE
-----	-------------	-----	------

THE DESIGN AND DIMENSIONS OF THE PRODUCT SHOWN ON THIS DRAWING ARE SUBJECT TO CHANGE WITHOUT NOTICE. DIMENSIONS ARE IN INCHES [mm].

TITLE
WATERTIGHT PLUG 16A, 20A, 30A, 32A, 60A, 63A, 100A, 125A



WIRING DEVICE-KELLEMS
HUBBELL INCORPORATED
SHELTON, CT

TOLERANCES UNLESS OTHERWISE SPECIFIED .XX = ± .01 .XXX = ± .005 ANGLE TOL. ±2'	DR. BY AD	SCALE 1/2
	CHK. BY CAC	DATE 11/30/18

DIMENSION SHEET FOR CAT. NO. SEE TABLES ON SHEETS 2 & 3

B

M-14030

3

