

M-14126

1

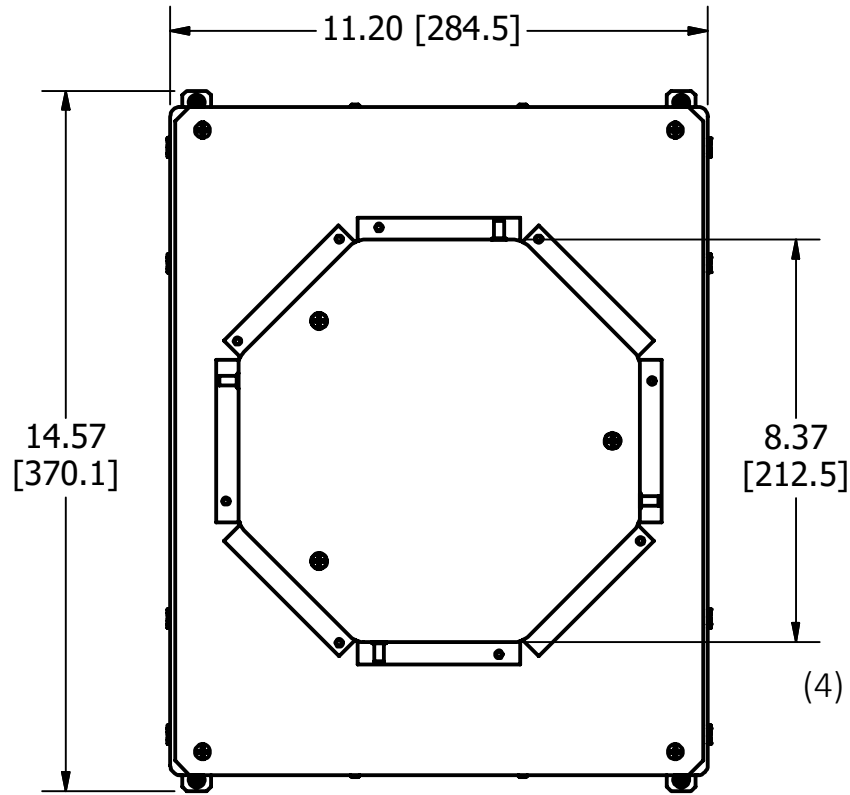
CONCENTRIC KNOCKOUTS

STYLE	TRADE SIZE
A	1/2", 3/4", 1", 1-1/4"
B	3/4", 1", 1-1/4" SEE NOTES 8 & 9

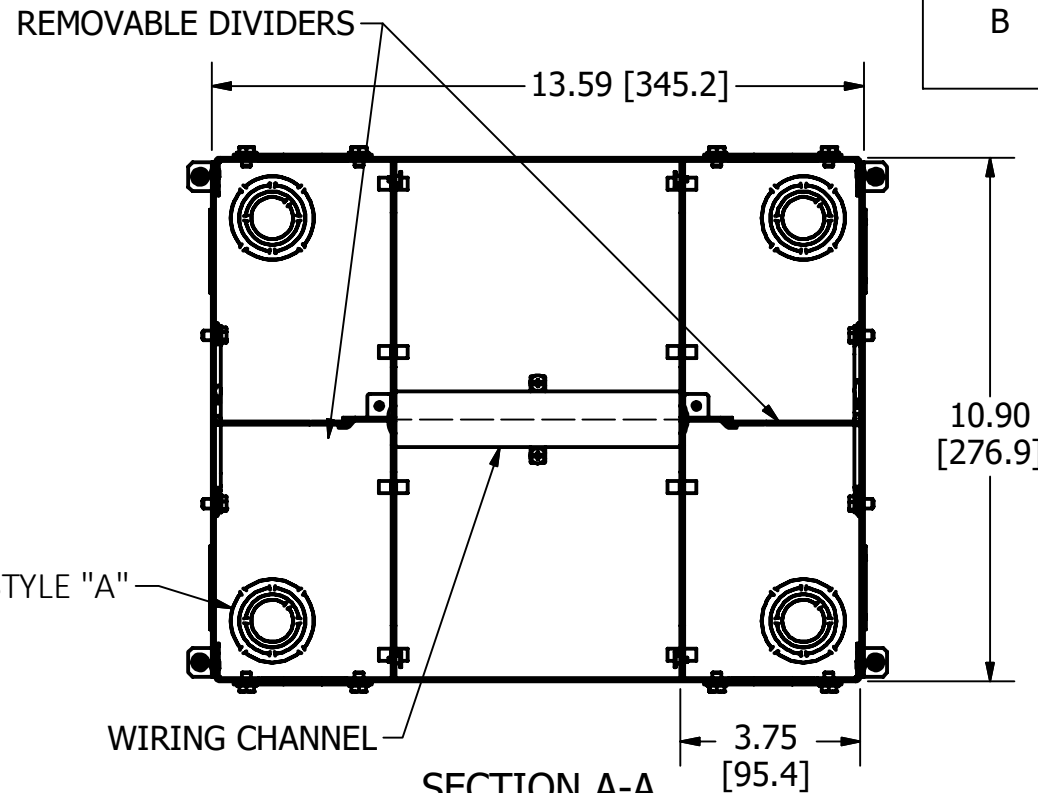
LIST OF PARTS

DESCRIPTION	MATERIAL	FINISH
BOX ASSEMBLY	16 GA. STEEL	ZINC **
TOP MOUNTING ASSY	14 GA. STEEL	ZINC
TRANSITION ASSY	14 GA. STEEL	ZINC
GROUND WIRES	COPPER	
WIRING CHANNEL	16 GA. STEEL	ZINC
REMOVABLE DIVIDERS	THERMOPLASTIC	
FASTENERS	STEEL	ZINC
TEMP COVER	14 GA. STEEL	ZINC

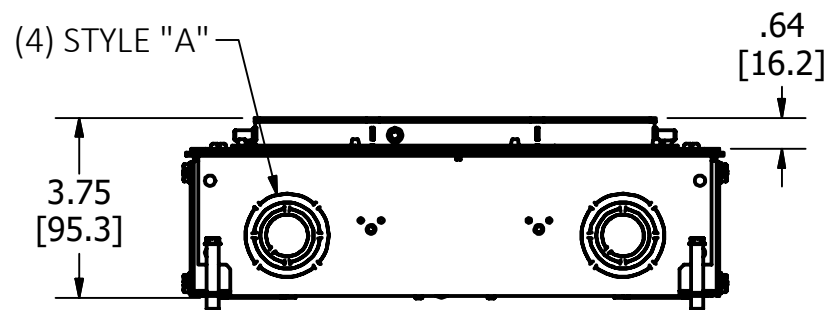
\*\* CATALOG NO. CFB4G30RCRE BOX ASSEMBLY IS GALVANIZED AND GREEN EPOXY COATED ON EXTERIOR SURFACE.



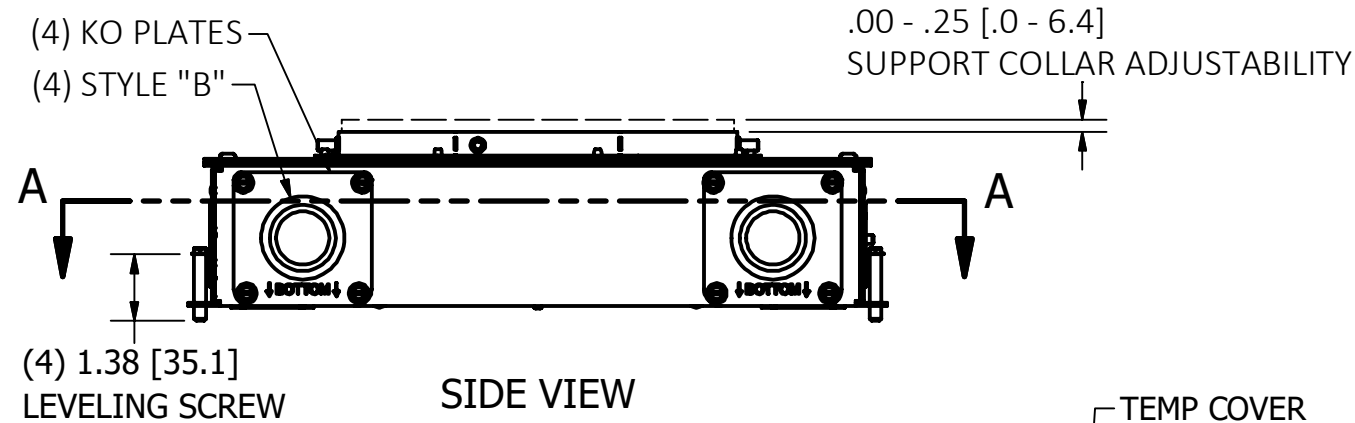
TOP VIEW



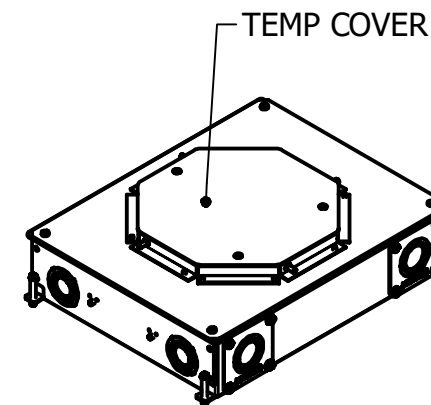
SECTION A-A  
VIEW THROUGH BOX BELOW TOP



END VIEW



SIDE VIEW  
TEMP COVER NOT SHOWN



ISOMETRIC

NOTES:

- ALL DIMENSIONS ARE IN INCHES AND [MILLIMETERS].
- PRODUCT IS cULus LISTED. COMPLIES WITH UL 514A.
- EACH GANG SUPPLIED WITH 6" [152.4] 12 GA. AWG GROUND PIGTAIL.
- MINIMUM CONCRETE POUR: 3.75" [95.3].
- WIRING CHAMBER VOLUMES (RECESSED COVER): (4) 51 IN<sup>3</sup> [835 CM<sup>3</sup>].
- WIRING CHAMBER VOLUMES (FURNITURE FEED): (2) 102 IN<sup>3</sup> [1670 CM<sup>3</sup>].
- WIRING CHANNEL AREA: (2) .40 IN<sup>2</sup> [261 MM<sup>2</sup>].
- METALLIC CONDUIT HUBS (CFBHUB2) MAY BE USED IN PLACE OF KO PLATES, SOLD SEPARATELY.
- NON-METALLIC CONDUIT HUBS (CFBHUB125PVC, CFBHUB200PVC) MAY BE USED IN PLACE OF KO PLATES, SOLD SEPARATELY.

CAGE CODE 74545

REV	DESCRIPTION	APP	DATE
1	ORIGINAL RELEASE PER 210929012903	SBW	2/2/22

THE DESIGN AND DIMENSIONS OF THE PRODUCT SHOWN ON THIS DRAWING ARE SUBJECT TO CHANGE WITHOUT NOTICE. DIMENSIONS ARE IN INCHES [mm].

TITLE CONCRETE FLOOR BOX, 4 GANG EXTENDED, FOR 8" ROUND COVER, DEEP



WIRING DEVICE-KELLEMS  
HUBBELL INCORPORATED  
SHELTON, CT

TOLERANCES UNLESS OTHERWISE SPECIFIED .XX = ±.01 .XXX = ±.005 ANGLE TOL. ±2'	DR. BY SBW	SCALE 1/4
	CHK. BY	DATE 2/8/2021

DIMENSION SHEET FOR CAT. NO. CFB4G30RCRE, CFB4G30RCRE

B

M-14126

1