

M-14134

1

CONCENTRIC KNOCKOUTS

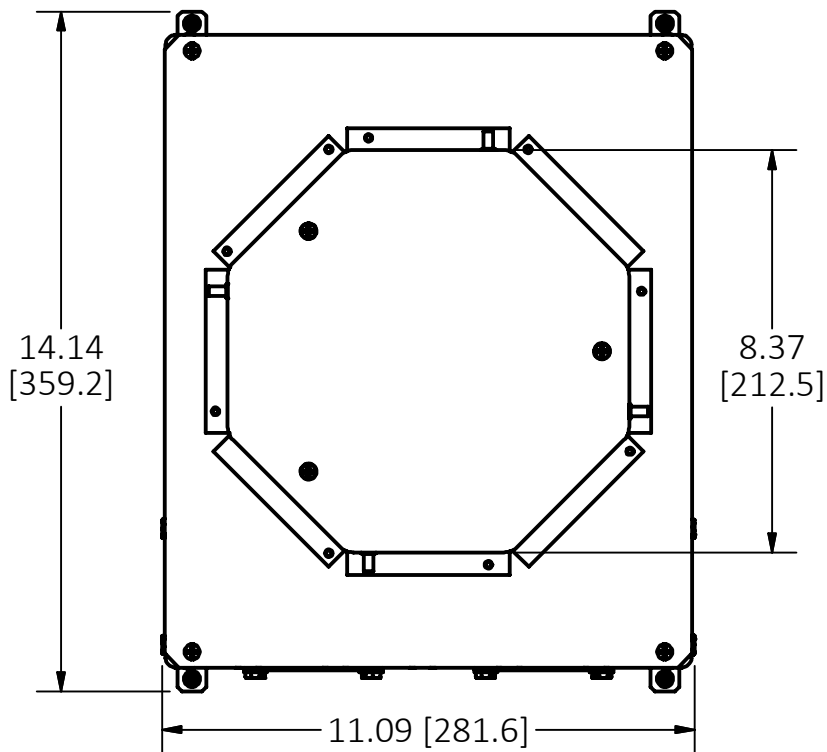
STYLE	TRADE SIZE
A	3/4", 1", 1-1/4" SEE NOTES 6 & 7
B	1/2", 3/4", 1", 1-1/4"

LIST OF PARTS

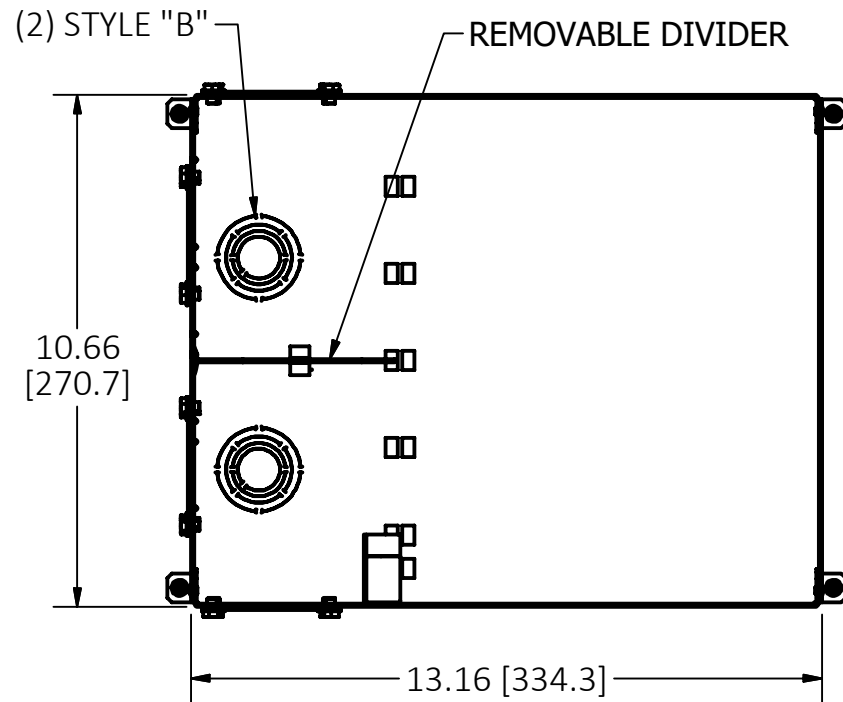
DESCRIPTION	MATERIAL	FINISH
BOX ASSEMBLY	16 GA. STEEL	ZINC **
TOP MOUNTING ASSY	14 GA. STEEL	ZINC
TRANSITION ASSY	14 GA. STEEL	ZINC
GROUND WIRES	COPPER	
WIRING CHANNEL	16 GA. STEEL	ZINC
REMOVABLE DIVIDERS	16 GA. STEEL	ZINC
FASTENERS	STEEL	ZINC
TEMP COVER	14 GA. STEEL	ZINC

** CATALOG NO. CFB45G55RCRE BOX ASSEMBLY IS GALVANIZED AND GREEN EPOXY COATED ON EXTERIOR SURFACE.

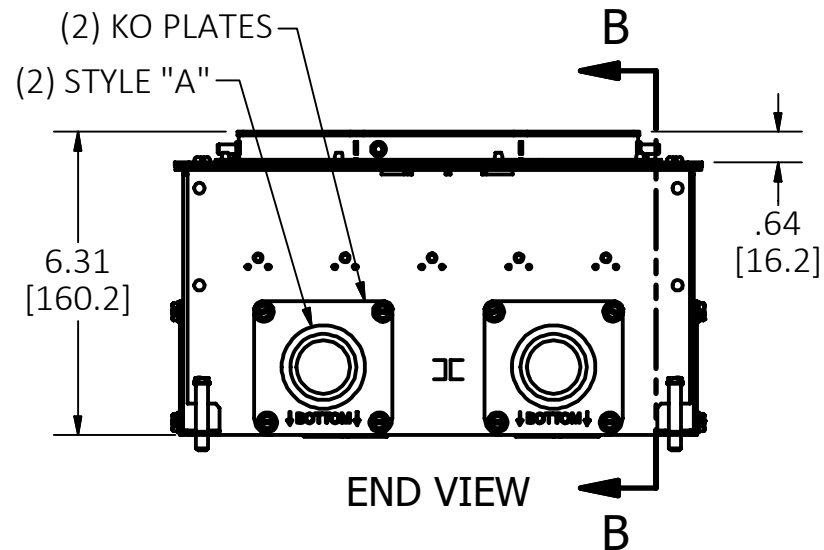
DIMENSION SHEET FOR CAT. NO. CFB45G55RCRE, CFB45G55RCRE



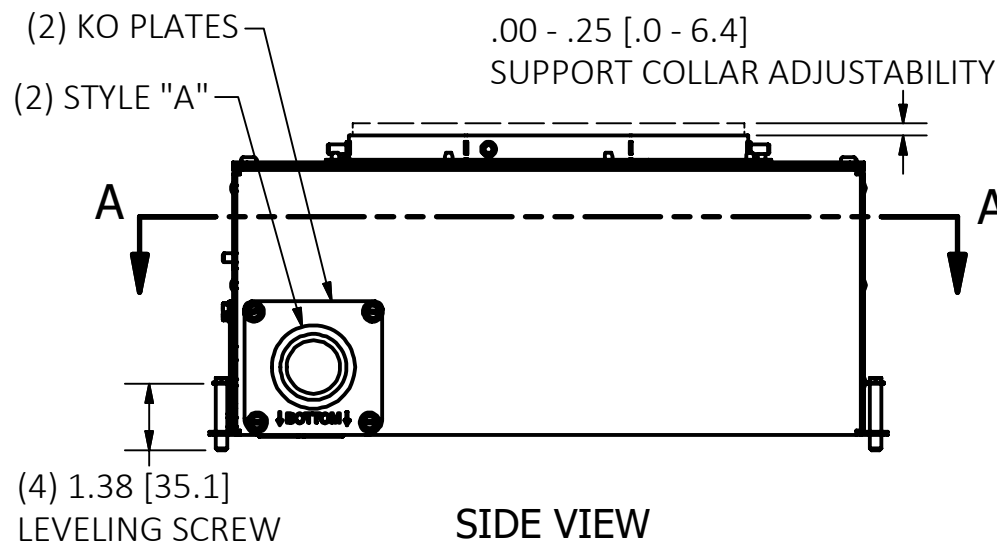
TOP VIEW



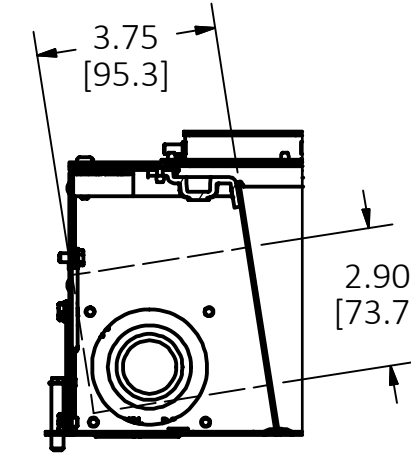
SECTION A-A
VIEW THROUGH BOX BELOW TOP



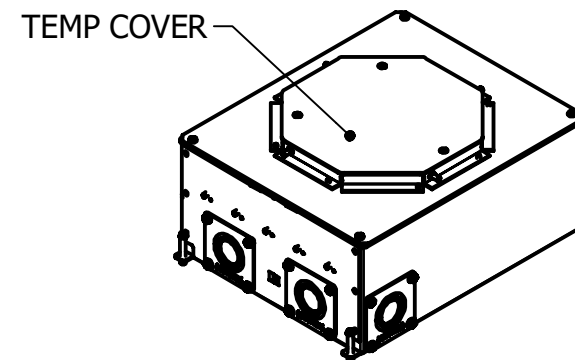
END VIEW



SIDE VIEW
TEMP COVER NOT SHOWN



SECTION B-B
WIRING CHAMBERS



ISOMETRIC

NOTES:

- ALL DIMENSIONS ARE IN INCHES AND [MILLIMETERS].
- PRODUCT IS cULus LISTED. COMPLIES WITH UL 514A.
- EACH GANG SUPPLIED WITH 6" [152.4] 12 GA. AWG GROUND PIGTAIL.
- MINIMUM CONCRETE POUR: 6.31" [160.2].
- WIRING CHAMBER VOLUMES: (1) SMALL 99 IN³ [1621 CM³], (1) LARGE 105 IN³ [1721 CM³]
- METALLIC CONDUIT HUBS (CFBHUB2) MAY BE USED IN PLACE OF KO PLATES, SOLD SEPARATELY.
- NON-METALLIC CONDUIT HUBS (CFBHUB125PVC, CFBHUB200PVC) MAY BE USED IN PLACE OF KO PLATES, SOLD SEPARATELY.

1	ORIGINAL RELEASE PER 210929012903	SBW	2/2/22
REV	DESCRIPTION	APP	DATE

THE DESIGN AND DIMENSIONS OF THE PRODUCT SHOWN ON THIS DRAWING ARE SUBJECT TO CHANGE WITHOUT NOTICE. DIMENSIONS ARE IN INCHES [mm].

TITLE CONCRETE FLOOR BOX, 4/5 GANG EXTENDED, FOR 8" ROUND COVER



WIRING DEVICE-KELLEMS
HUBBELL INCORPORATED
SHELTON, CT

TOLERANCES UNLESS OTHERWISE SPECIFIED .XX = ±.01 .XXX = ±.005 ANGLE TOL. ±2'	DR. BY SBW	SCALE 1/4
	CHK. BY	DATE 2/8/2021