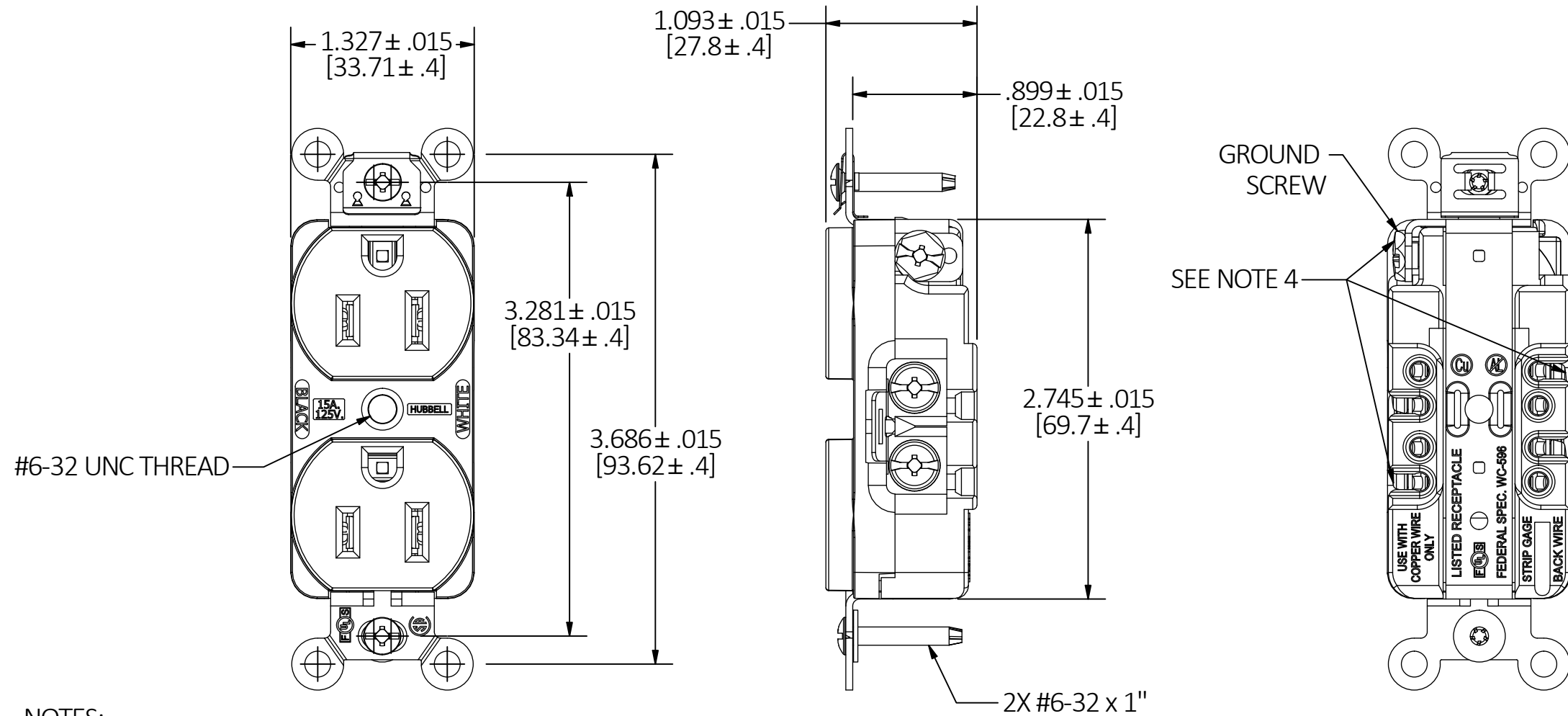


M-14187

2



NOTES:

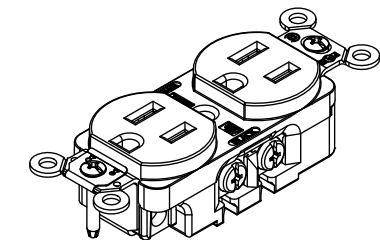
1. DIMENSIONS ARE IN INCHES (mm).
2. ALL DEVICES U.L. LISTED & C.S.A CERTIFIED.
3. TERMINALS ACCOMODATES #14-10AWG AWG COPPER WIRE ONLY.
4. SCREWS TO BE BACKED OUT/LOOSENED ARE LOWER LEFT LINE, UPPER RIGHT LINE AND GROUNDING SCREWS.

5252 & 5352 SERIES CATALOG NUMBERS

BLACK	BROWN	GRAY	IVORY	LIGHT ALMOND	RED	WHITE	CONFIGURATION	RATING
5252BLK	5252B	5252G	5252I	5252LA	5252R	5252W		15A/125V
5352BLK	5352B	5352G	5352I	5352LA	5352R	5352W		20A/125V

LIST OF PARTS

DESCRIPTION	MATERIAL	FINISH
TOP	POLYCARBONATE	
BASE	POLYESTER	
CONT SP. BIND. PLATE	PHOSPHOR BRONZE	
GR. CONTACT SP.	.031 BRASS	
WIRE CLAMP	.062 STEEL	NICKEL PLATE
BRIDGE	GAV. STEEL	
GROUNDING SPRING	STAINLESS STEEL	
GROUNDING SCREWS	BRASS	
HEX HD. BIND. SCREW	BRASS	GREEN
MOUNTING SCREW	STEEL	ZINC PLATE
WASHER	FIBER	RED
CENTER RIVET	SILICON BRONZE	



2	CORRECTED BASE MATERIAL & PART NUMBERS IN TABLE PER DCN 191125075014 RGP WHD	WHD	11/19/19
1	INTIAL RELEASE PER DCN 191028082926 PFN	PFN	10/28/19
REV	DESCRIPTION	APP	DATE

THE DESIGN AND DIMENSIONS OF THE PRODUCT SHOWN ON THIS DRAWING ARE SUBJECT TO CHANGE WITHOUT NOTICE. DIMENSIONS ARE IN INCHES [mm].

TITLE

3 WIRE GROUNDING STRAIGHT BLADE DUPLEX RECEPTACLE FLAT FACE



WIRING DEVICE-KELLEMS
HUBBELL INCORPORATED
SHELTON, CT

TOLERANCES UNLESS OTHERWISE SPECIFIED
.XX = ± .01
.XXX = ± .005
ANGLE TOL. ±2°

DR. BY PFN
CHK. BY PFN

SCALE 1:1
DATE 9/27/2019