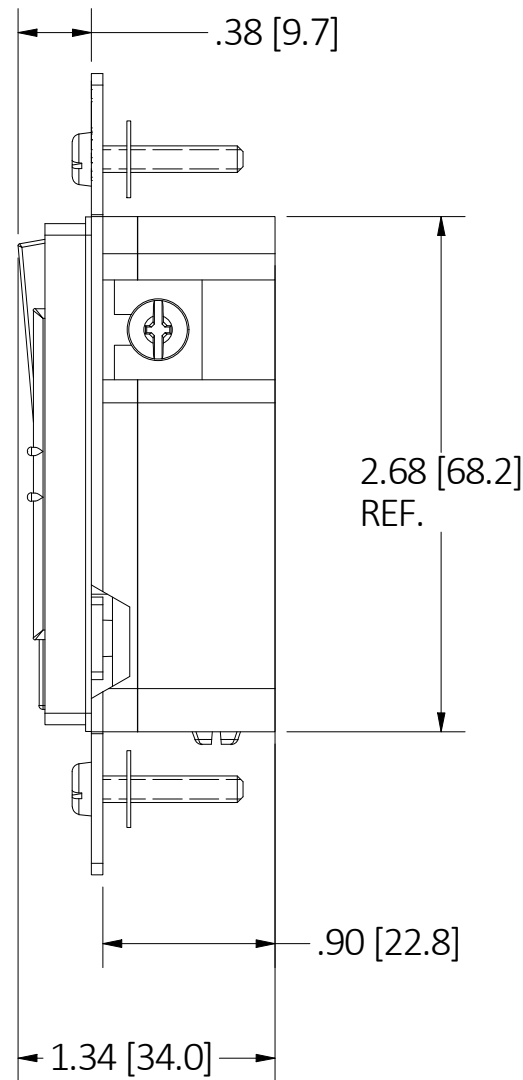
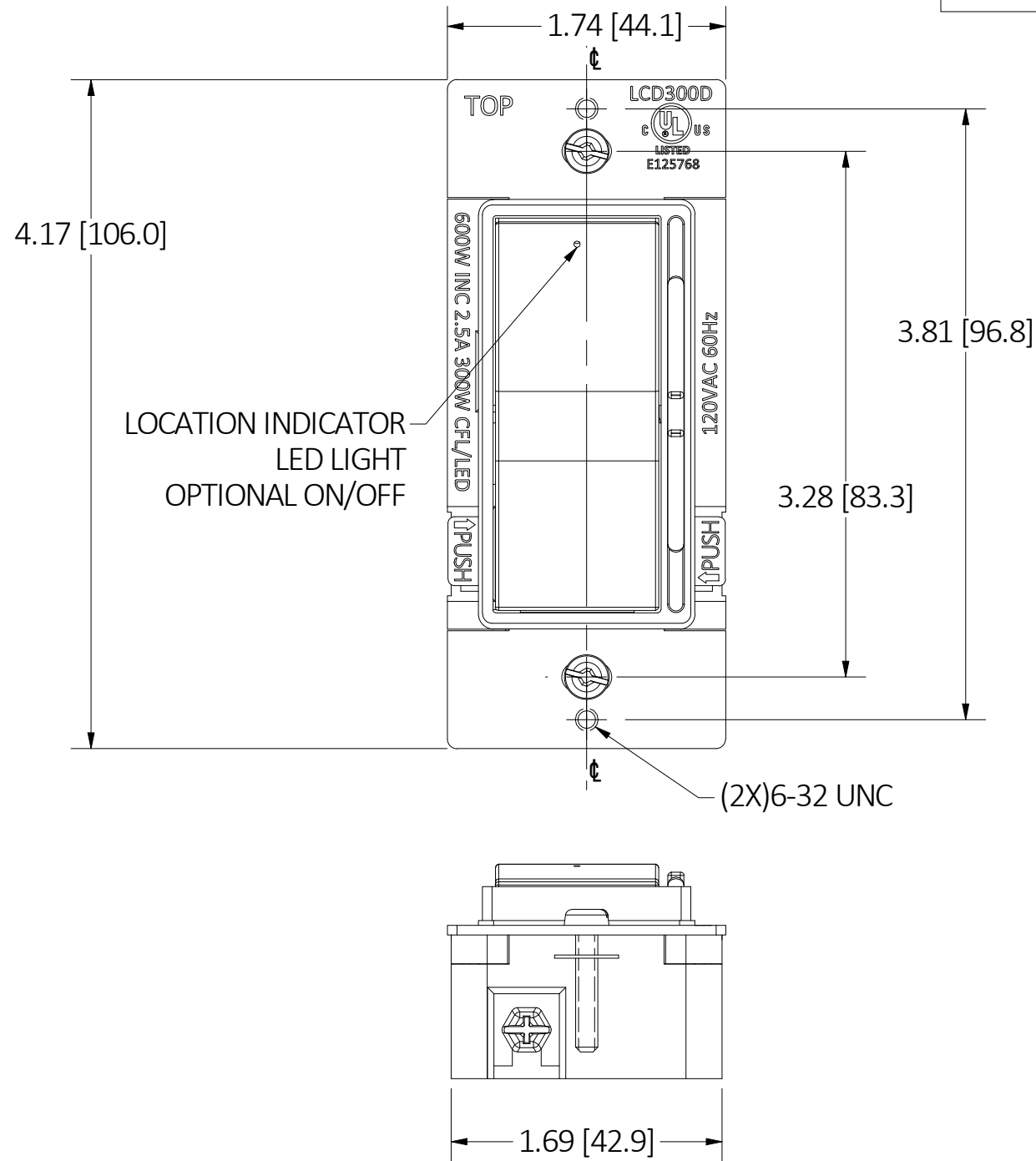


M-14430

2




LIST OF PARTS		
DESCRIPTION	MATERIAL	FINISH
ROCKER	THERMOPLASTIC	SEE TABLE PER CAT.#
ROCKER FRAME	THERMOPLASTIC	SEE TABLE PER CAT.#
SLIDE BAR	THERMOPLASTIC	SEE TABLE PER CAT.#
YOKE	ALUMINUM	
BASE	THERMOPLASTIC	BLACK
GR. SCREW	STEEL	Zn PLATE+GREEN DYE
BLACK SCREW	STEEL	Zn PLATE + BLACK DYE
RED SCREWS	STEEL	Zn PLATE + RED DYE
MOUNTING SCREW	STEEL	Zn PLATE
UPPER PLATE	THERMOPLASTIC	WHITE

2	REMOVE NOTE #5 PER DCN#211101013930	D.LI	10/13/21
1	NEW RELEASE PER DCN#210924012757.	D.LI	9/27/21
REV	DESCRIPTION	APP	DATE

THE DESIGN AND DIMENSIONS OF THE PRODUCT SHOWN ON THIS DRAWING ARE SUBJECT TO CHANGE WITHOUT NOTICE. DIMENSIONS ARE IN INCHES [mm].

CAT.#	DESCRIPTION	COLOR
LCD300DW	DIM ROCKER SP&3W 300W LED CFL WH	WHITE
LCD300DI	DIM ROCKER SP&3W 300W LED CFL IV	IVORY
LCD300DLA	DIM ROCKER SP&3W 300W LED CFL LA	LIGHT ALMOND

TITLE  
**ROCKER DIMMER**



WIRING DEVICE-KELLEMS  
**HUBBELL INCORPORATED**  
SHELTON, CT

TOLERANCES UNLESS OTHERWISE SPECIFIED  
.XX = ± .01  
.XXX = ± .005  
ANGLE TOL. ±2'

DR. BY D.LI SCALE 1 : 1  
CHK. BY DATE 8/10/21

**NOTES:**

1. INPUT RATING: 120VAC, 60Hz.
2. SWITCH TYPE: SINGLE POLE & 3-WAY.
3. RATING WATTAGE: LED/CFL 300W(2.5A); INCANDESCENT: 600W.
4. TERMINAL CAPACITY: #18 - #12 AWG; WIRING TYPE: SCREW TERMINAL (BACK & SIDE).
5. REMOVED.
6. ALL DIMENSIONS ARE IN INCHES [mm].