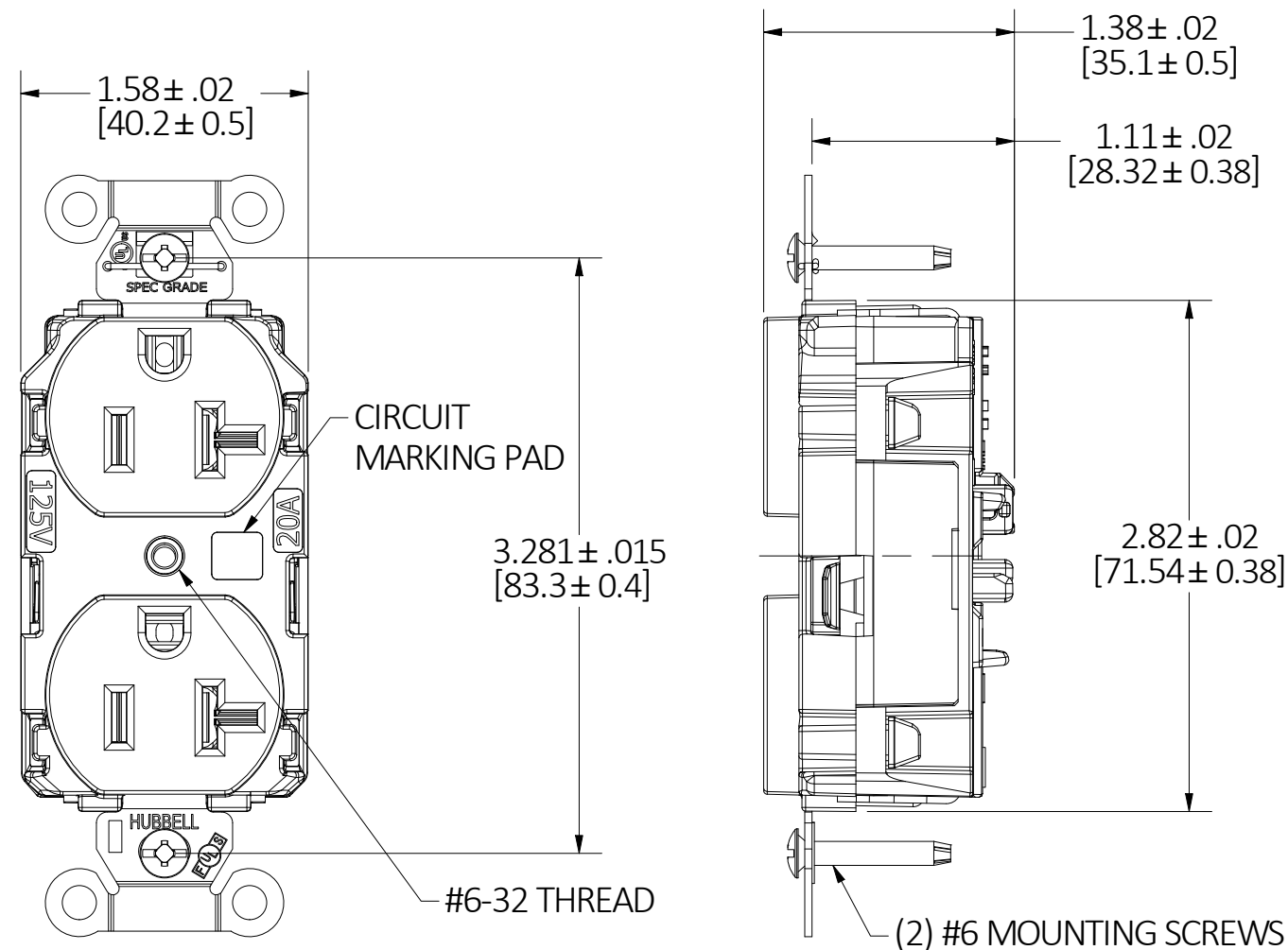
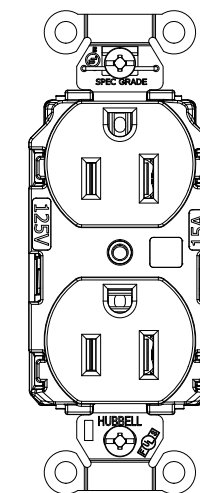


M-14575

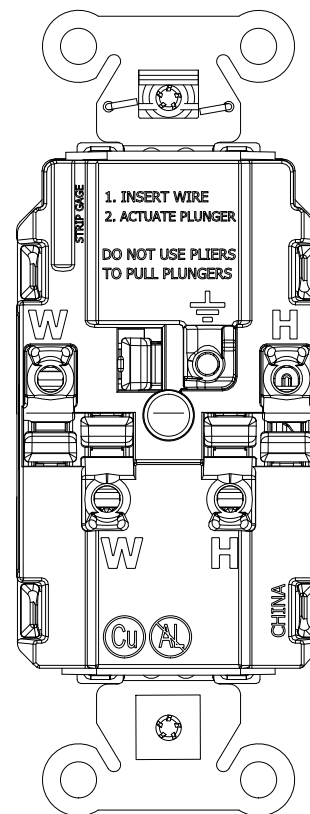
1



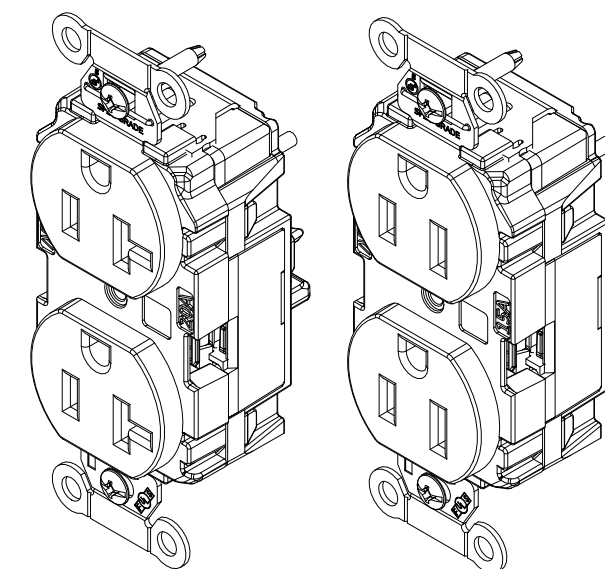
20A/125V DEVICE SHOWN



15A/125V



LIST OF PARTS		
DESCRIPTION	MATERIAL	FINISH
TOP COVER	PC	-
BASE	PC	-
BRIDGE	.04 GALV. STL.	-
GROUND CONTACTS	COPPER ALLOY	-
LINE CONTACTS	COPPER ALLOY	-
REAR COVER	PC	-
PLUNGER	NYLON	-
SPRING	STAINLESS STEEL	-
STAPLE	STAINLESS STEEL	-
WASHER	PVC FILM	BLACK
GROUND STRAP	COPPER ALLOY	-
MOUNTING SCREW	STEEL	ZINC PLATE



CATALOG NO: 5352ST
 (NOT SHOWN TO SCALE)

CATALOG NO: 5252ST
 (NOT SHOWN TO SCALE)

HUBBELL CATALOG NUMBERS										
CONFIGURATION	BLACK	BLUE	BROWN	GRAY	IVORY	LT. ALMOND	RED	WHITE	GREEN	ORANGE
15A	5252STBK	5252STBL	5252ST	5252STGY	5252STI	5252STLA	5252STR	5252STW	5252STGN	5252STO
20A	5352STBK	5352STBL	5352ST	5352STGY	5352STI	5352STLA	5352STR	5352STW	5352STGN	5352STO

GENERAL NOTES:

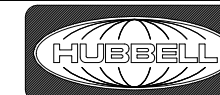
1. DIMENSIONS ARE IN INCHES [MM].
2. ALL DEVICES UL LISTED, CSA & FED. SPEC. CERTIFIED
3. TERMINALS ACCOMMODATE #14 - #10 AWG COPPER WIRE ONLY.

CAGE CODE 74545

1	INITIAL RELEASE PER DCN 221107025442 SIV	WHD	11/23/22
REV	DESCRIPTION	APP	DATE

THE DESIGN AND DIMENSIONS OF THE PRODUCT SHOWN ON THIS DRAWING ARE SUBJECT TO CHANGE WITHOUT NOTICE. DIMENSIONS ARE IN INCHES [mm].

TITLE
 DUPLEX RECEPTACLE, EdgeConnect, 15A & 20A, FED SPEC



WIRING DEVICE-KELLEMS
 HUBBELL INCORPORATED
 SHELTON, CT

TOLERANCES UNLESS OTHERWISE SPECIFIED .XX = ±.01 .XXX = ±.005 ANGLE TOL. ±2°	DR. BY SIV CHK. BY WHD	SCALE 1:1 DATE 06/28/22
---	---------------------------	----------------------------

DIMENSION SHEET FOR CAT. NO. SEE TABLE

B

M-14575

1