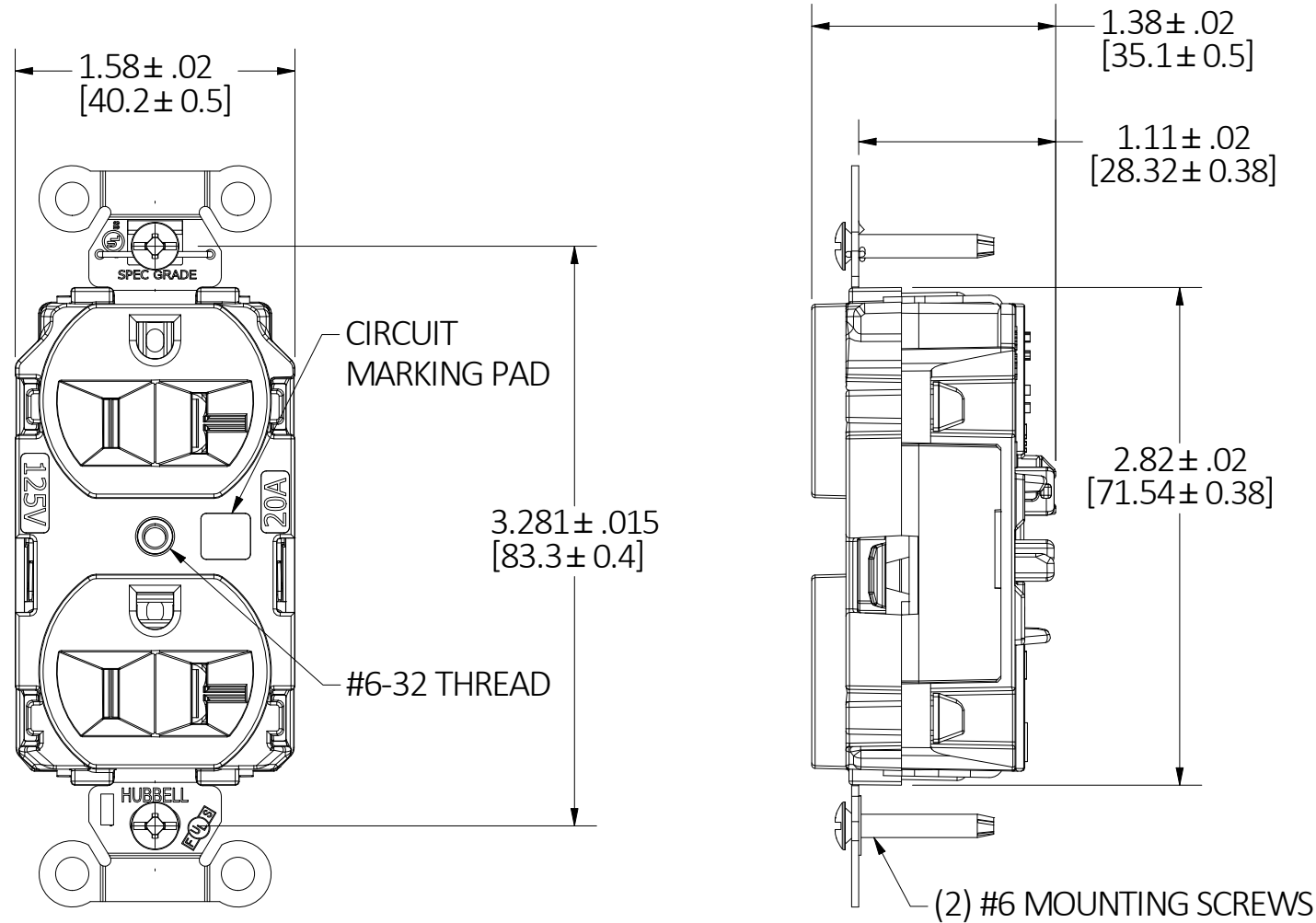
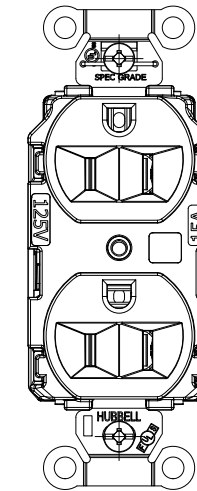


M-14621

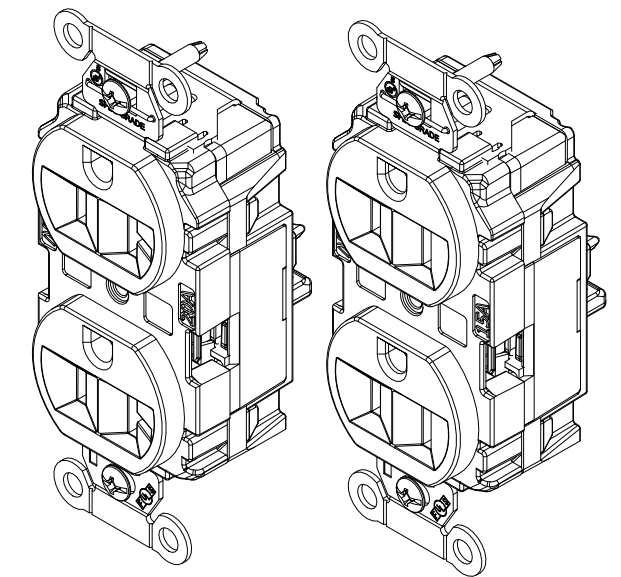
1



20A/125V DEVICE SHOWN



15A/125V



CATALOG NO: 5363ST CATALOG NO: 5262ST  
(NOT SHOWN TO SCALE) (NOT SHOWN TO SCALE)

HUBBELL CATALOG NUMBERS										
CONFIGURATION	BLACK	BLUE	BROWN	GRAY	IVORY	LT. ALMOND	RED	WHITE	GREEN	ORANGE
15A	5262STBK	5262STBL	5262ST	5262STGY	5262STI	5262STLA	5262STR	5262STW	5262STGN	5262STO
20A	5362STBK	5362STBL	5362ST	5362STGY	5362STI	5362STLA	5362STR	5362STW	5362STGN	5362STO

**GENERAL NOTES:**

1. DIMENSIONS ARE IN INCHES [MM].
2. ALL DEVICES UL LISTED, CSA & FED. SPEC. CERTIFIED
3. TERMINALS ACCOMMODATE #14 - #10 AWG COPPER WIRE ONLY.

CAGE CODE 74545

LIST OF PARTS

DESCRIPTION	MATERIAL	FINISH
TOP COVER	PC	-
BASE	PC	-
BRIDGE	.04 GALV. STL.	-
GROUND CONTACTS	COPPER ALLOY	-
LINE CONTACTS	COPPER ALLOY	-
REAR COVER	PC	-
PLUNGER	NYLON	-
SPRING	STAINLESS STEEL	-
STAPLE	STAINLESS STEEL	-
WASHER	PVC FILM	BLACK
GROUND STRAP	COPPER ALLOY	-
MOUNTING SCREW	STEEL	ZINC PLATE

DIMENSION SHEET FOR CAT. NO. SEE TABLE

**B**

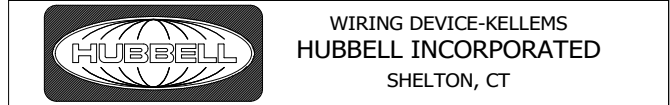
M-14621

**1**

1	INITIAL RELEASE PER DCN 221107025442 SIV	WHD	11/24/22
REV	DESCRIPTION	APP	DATE

THE DESIGN AND DIMENSIONS OF THE PRODUCT SHOWN ON THIS DRAWING ARE SUBJECT TO CHANGE WITHOUT NOTICE. DIMENSIONS ARE IN INCHES [mm].

TITLE HUBBELL PRO  
 DUPLEX RECEPTACLE, EdgeConnect,  
 15A & 20A FINDER FACE, FED SPEC



TOLERANCES UNLESS OTHERWISE SPECIFIED .XX = ± .01 .XXX = ± .005 ANGLE TOL. ±2'	DR. BY SIV	SCALE 1:1
	CHK. BY WHD	DATE 06/28/22