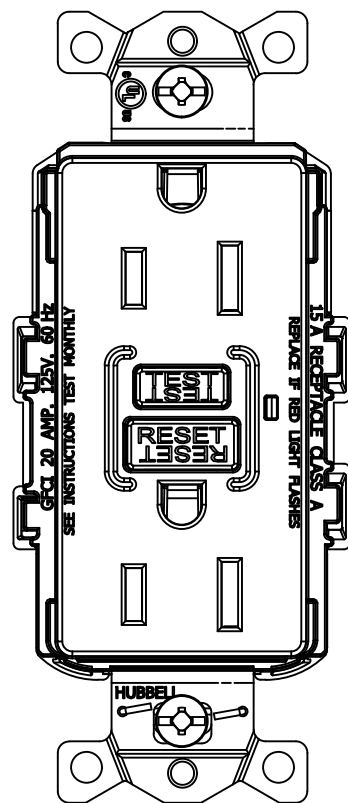
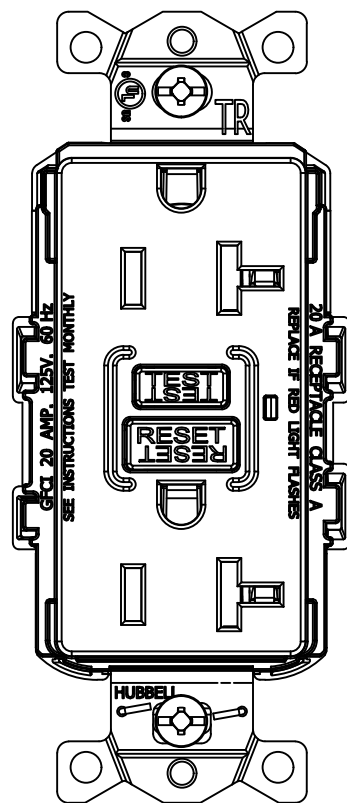


M-14625

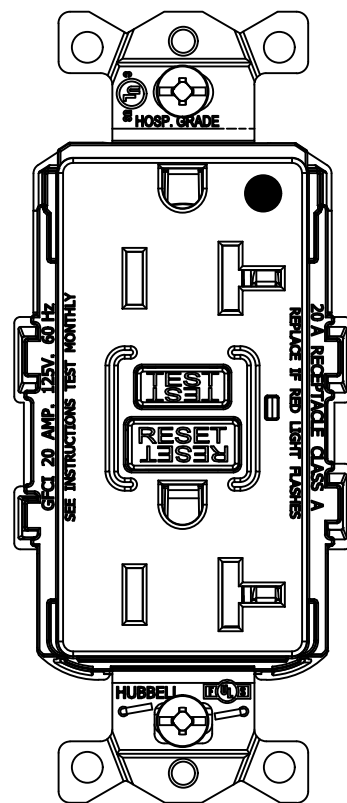
2



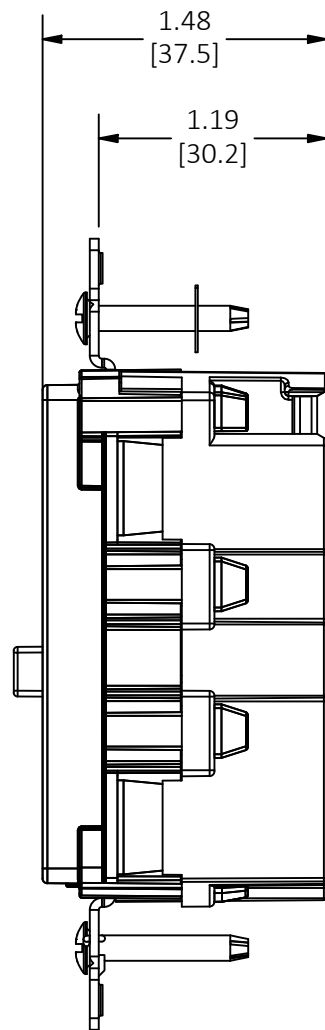
TYP. 15A DEVICE



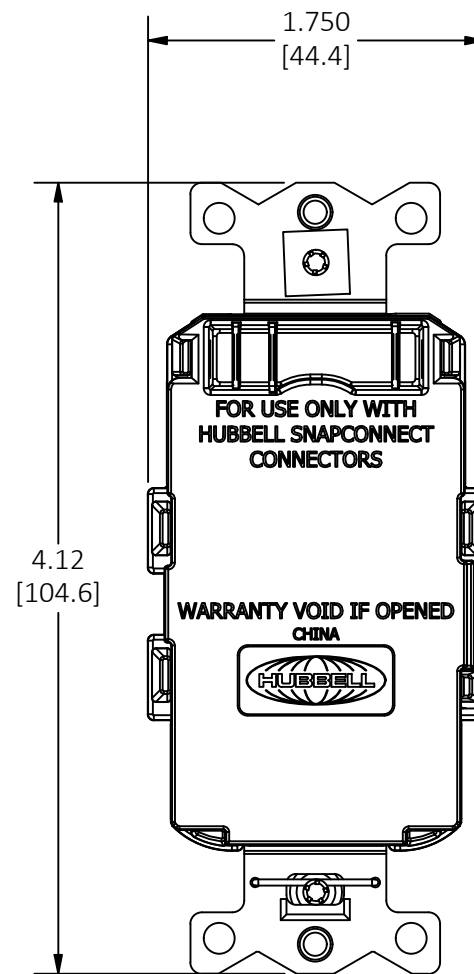
TYP. 20A DEVICE



TYP. HOSP. GRADE DEVICE  
(20A DEVICE SHOWN)



SIDE VIEW  
(SAME FOR ALL DEVICES)



BACK VIEW  
(SAME FOR ALL DEVICES)

LIST OF PARTS

DESCRIPTION	MATERIAL	FINISH
FACE	NYLON 66 (ZYTEL 101F)	-
BASE	NYLON 66 (ZYTEL 101F)	-
BRIDGE	STEEL	GALVANIZED
BRIDGE (HOSP. GRADE ONLY)	BRASS	-
CONTACTS	BRASS	-
MOUNTING SCREWS	STEEL	-
MOUNTING SCREWS (TR WR ONLY)	STAINLESS STEEL	-
TERMINALS	BRASS	TIN

DIMENSION SHEET FOR CAT. NO. SEE TABLE

2	REPLACED ALL CAT. NO.S IN TABLE; CHANGED DESCRIPTIONS BELOW DEVICE VIEWS - PER EC 230112026933	MV	01/12/23
1	INITIAL RELEASE PER EC 220909023860	MV	9/15/22
REV	DESCRIPTION	APP	DATE

THE DESIGN AND DIMENSIONS OF THE PRODUCT SHOWN ON THIS DRAWING ARE SUBJECT TO CHANGE WITHOUT NOTICE. DIMENSIONS ARE IN INCHES [mm].

TITLE  
CUSTOMER DWG.  
SNAP CONNECT GFCI

 WIRING DEVICE-KELLEMS  
HUBBELL INCORPORATED  
SHELTON, CT

TOLERANCES UNLESS OTHERWISE SPECIFIED .XX = ± .01 .XXX = ± .005 ANGLE TOL. ±2'	DR. BY MV	SCALE 1 : 1
	CHK. BY KP	DATE 9/15/22

CONFIGURATION	BROWN	IVORY	WHITE	GRAY	BLACK	RED	LIGHT ALMOND	RATING
15A	-	SNAPGF15I	SNAPGF15W	SNAPGF15GRY	-	-	SNAPGF15LA	15A/125V
15A TR-WR	SNAPGFTW15	SNAPGFTW15I	SNAPGFTW15W	-	SNAPGFTW15BLK	-	-	15A/125V
15A HOSP. GRADE	-	SNAPGF82I	SNAPGF82W	-	-	SNAPGF82R	SNAPGF82LA	15A/125V
15A HOSP. GRADE TR-WR	-	SNAPGFTW82I	SNAPGFTW82W	SNAPGFTW82GRY	-	SNAPGFTW82R	SNAPGFTW82LA	15A/125V
20A	SNAPGF20	SNAPGF20I	SNAPGF20W	SNAPGF20GRY	SNAPGF20BLK	SNAPGF20R	SNAPGF20LA	20A/125V
20A TR-WR	SNAPGFTW20	SNAPGFTW20I	SNAPGFTW20W	SNAPGFTW20GRY	SNAPGFTW20BLK	SNAPGFTW20R	SNAPGFTW20LA	20A/125V
20A HOSP. GRADE	SNAPGF83	SNAPGF83I	SNAPGF83W	SNAPGF83GRY	SNAPGF83BLK	SNAPGF83R	SNAPGF83LA	20A/125V
20A HOSP. GRADE TR-WR	SNAPGFTW83	SNAPGFTW83I	SNAPGFTW83W	SNAPGFTW83GRY	SNAPGFTW83BLK	SNAPGFTW83R	SNAPGFTW83LA	20A/125V