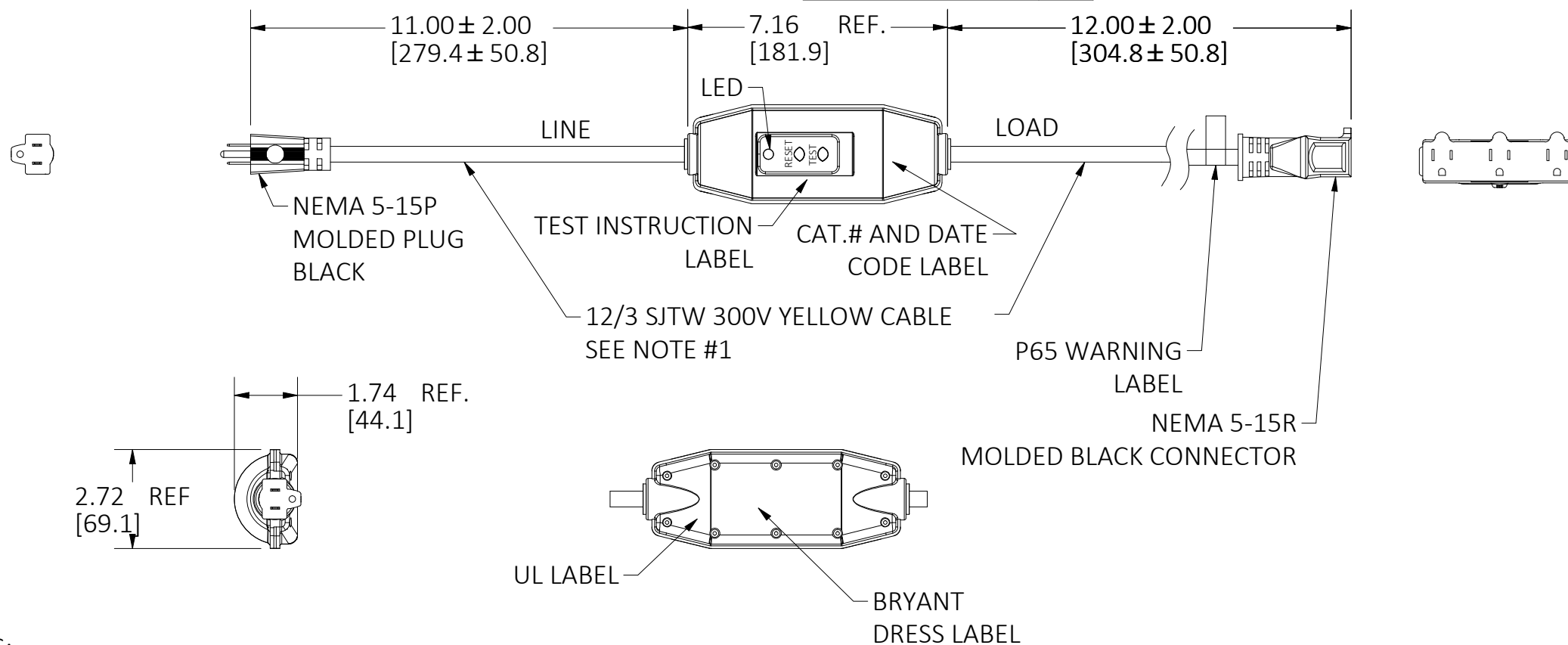


M-14729

1



NOTES:

1. 12/3 SJTW YELLOW CABLE 300V 150 °C MAX/90°C MIN DRY, 60°C WATER RESISTANT, UL LISTED FOR US AND EITHER cULus OR CSA CERTIFIED FOR CANADA.

- FLEXIBLE IN COLD WEATHER
- RESISTANT TO CHEMICALS
- UV WITHSTAND
- ARC/FLAME RETARDANT

2. ALL DIMENSIONS ARE IN INCHES [mm].

TECHNICAL:

RATED VOLTAGE: 120 VAC
 OPERATING VOLTAGE RANGE: 85% TO 110% OF RATED.
 CURRENT: UP TO 15 AMPS.
 FREQUENCY: 60Hz.
 TRIP LEVEL: 5mA ± 1mA;
 PHASE : SINGLE.
 RESPONSE TIME: 25 mS MAX AT 500 ohm FAULT.
 DIELECTRIC WITHSTAND: 1,500VRMS ACROSS CONTACT;
 4,000 VRMS BETWEEN CONDUCTORS AND ENCLOSURE.
 SURGE WITHSTAND: 4KV/2KA PER IEC 61000-4-5
 OPERATING TEMPERATURE RANGE: -35°C TO +66°C.
 LEAKAGE CURRENT @93% HUMIDITY: ZERO.
 OVERLOAD CURRENT: 90 AMPS, 0.45 PF
 RF NOISE SUSCEPTIBILITY: NORMAL OPERATION WITH 0.5 VRMS INJECTED ON POWER LINE WITH FREQUENCIES UP TO 230 MHz.
 LET GO LINE VOLTAGE: 60% OF RATED.
 GROUNDED NEUTRAL DETECTION: 2 OHMS OR LESS.

GENERAL:

CONSTRUCTION: COMMERCIAL GRADE DESIGN.
 TYPE: CLASS A SELF TESTING
 POWER-UP TYPE: MANUAL.
 ENDURANCE: 3,000 OPERATIONS MINIMUM.
 OPEN NEUTRAL PROTECTION: TRIPS UPON LOSS OF NEUTRAL.
 GROUNDED NEUTRAL PROTECTION: TRIPS IF GROUND AND NEUTRAL CONNECT AT LOAD SIDE.
 POWER ON INDICATION: LIGHTED GREEN LED.
 ENCLOSURE: RAIN PROOF, 3R
 MOUNTING TYPE: PORTABLE.
 WIRING APPLICATION: 3 WIRE SINGLE PHASE (HOT, NEUTRAL, GROUND)
 SWITCH INTERFACE: DOUBLE INSULATED
 LATCHING MECHANISM: ELECTROMAGNETIC
 FALSE TRIP DUE TO IMPACT: NONE
 AGENCY APPROVAL: c-UL-us

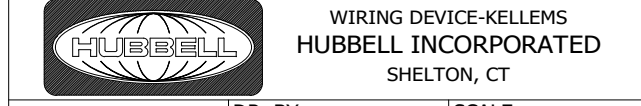
LIST OF PARTS

DESCRIPTION	MATERIAL	FINISH
HOUSING	THERMOPLASTIC	BLACK
BLADES	BRASS	
GROMMET	ELASTOMER	BLACK
STRAIN RELIEF	STEEL	ZINC PLATED
SCREWS	STEEL	ZINC PLATED
CORD	PVC	YELLOW
RECEPTACLE	THERMOPLASTIC	BLACK

1	NEW RELEASE PER DCN#230920033470. D.LI		9/20/23
REV	DESCRIPTION	APP	DATE

THE DESIGN AND DIMENSIONS OF THE PRODUCT SHOWN ON THIS DRAWING ARE SUBJECT TO CHANGE WITHOUT NOTICE. DIMENSIONS ARE IN INCHES [mm].

TITLE
 BRYANT 15A 120VAC 2FT. GFCI ASSY W/MOLDED CONNECTOR, TRI-TAP, MANUAL RESET



TOLERANCES UNLESS OTHERWISE SPECIFIED .XX = ± .01 .XXX = ± .005 ANGLE TOL. ±2'	DR. BY D.LI	SCALE 1 / 4
	CHK. BY	DATE 1/11/21

DIMENSION SHEET FOR CAT. NO. GFCIST15125TRIM

B

M-14729

1