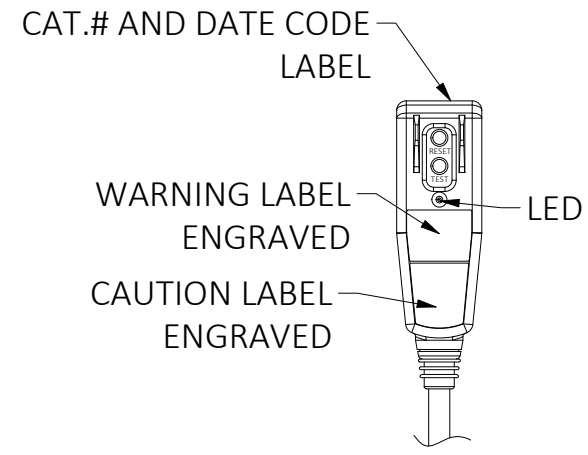
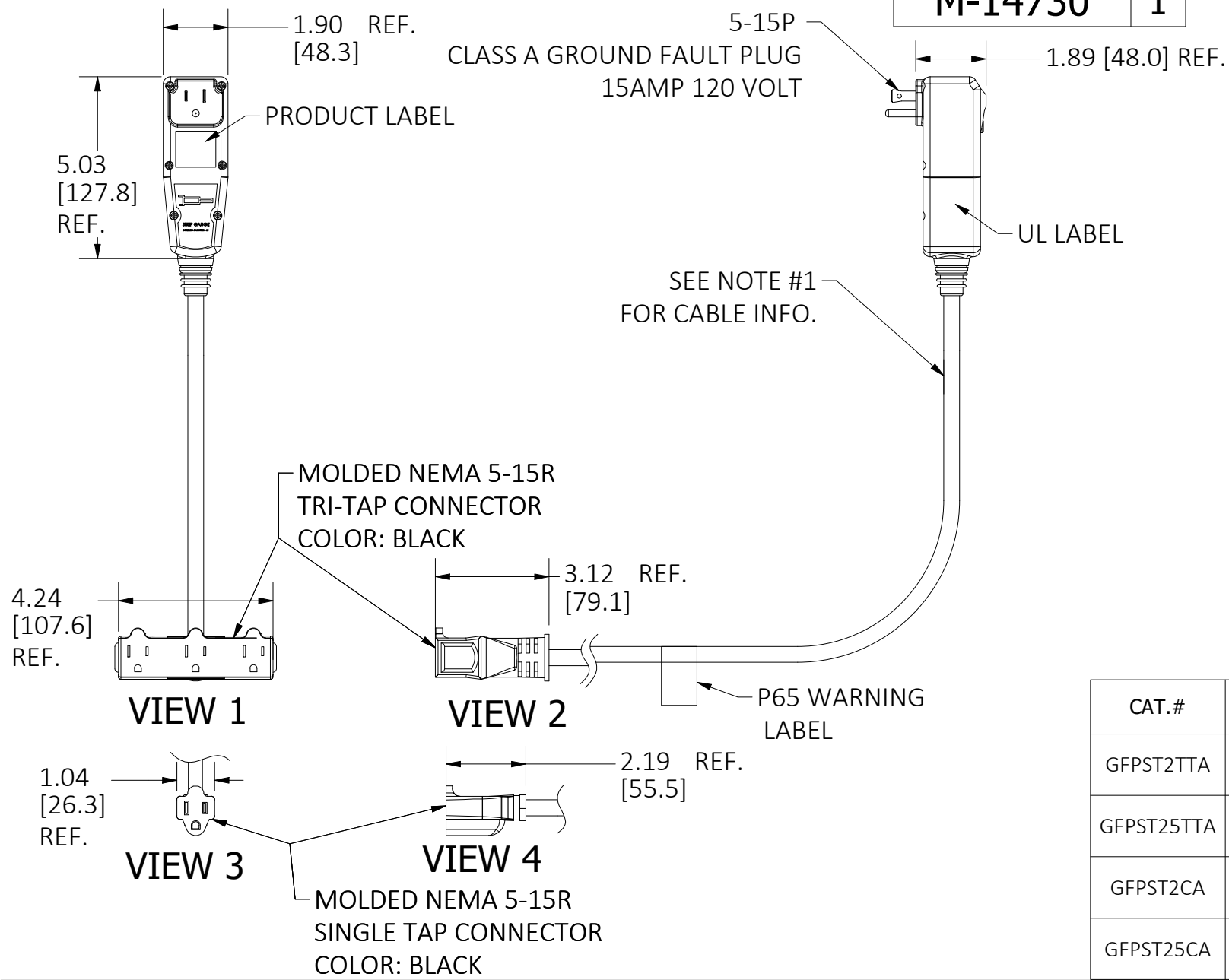


M-14730 | **1**



LIST OF PARTS		
DESCRIPTION	MATERIAL	FINISH
HOUSING	THERMOPLASTIC	BLACK
BLADES	BRASS	
RESET BUTTON	THERMOPLASTIC	GREEN
TEST BUTTON	THERMOPLASTIC	BLUE
GROMMET	ELASTOMER	BLACK
STRAIN RELIEF	STEEL	ZINC PLATE
SCREWS	STEEL	ZINC PLATED
CORD	PVC	YELLOW
RECEPTACLE	THERMOPLASTIC	BLACK

CAT.#	DESCRIPTION	CABLE LENGTH "L"	CONNECTOR TYPE & VIEW
GFPST2TTA	GFCI LINECORD 3-TAP, 15A 120V 2', AUTO	2 FT	3-TAP, VIEW 1 & 2
GFPST25TTA	GFCI LINECORD 3-TAP, 15A 120V 25', AUTO	25 FT	3-TAP, VIEW 1 & 2
GFPST2CA	GFCI LINE CORD, 1-TAP, 15A, 120V, 2', AUTO	2 FT	1-TAP, VIEW 3 & 4
GFPST25CA	GFCI LINECORD 1-TAP, 15A 120V 25', AUTO	25 FT	1-TAP, VIEW 3 & 4

TECHNICAL:
 RATED VOLTAGE: 120 VAC
 OPERATING VOLTAGE RANGE: 85% TO 110% OF RATED.
 CURRENT: UP TO 15 AMPS.
 FREQUENCY: 60Hz.
 TRIP LEVEL: 5mA ± 1mA;
 PHASE : SINGLE.
 RESPONSE TIME: 25 mS MAX AT 500 ohm FAULT.
 DIELECTRIC WITHSTAND: 1,500VRMS ACROSS CONTACT;
 4,000 VRMS BETWEEN CONDUCTORS AND ENCLOSURE
 SURGE WITHSTAND: 4KV/2KA PER IEC 61000-4-5
 OPERATING TEMPERATURE RANGE: -35°C TO +66°C.
 LEAKAGE CURRENT @93% HUMIDITY: ZERO.
 OVERLOAD CURRENT: 90 AMPS, 0.45PF
 RF NOISE SUSCEPTIBILITY: NORMAL OPERATION WITH 0.5 VRMS INJECTED ON
 POWER LINE WITH FREQUENCIES UP TO 230 MHz.
 LET GO LINE VOLTAGE: 60% OF RATED.
 GROUNDED NEUTRAL DETECTION: 2 OHMS OR LESS.

CAGE CODE 74545

GENERAL:
 CONSTRUCTION: COMMERCIAL GRADE DESIGN.
 TYPE: CLASS A SELF TESTING
 POWER-UP TYPE: AUTOMATIC.
 ENDURANCE: 3,000 OPERATIONS MINIMUM.
 OPEN NEUTRAL PROTECTION: TRIPS UPON LOSS OF NEUTRAL.
 GROUNDED NEUTRAL PROTECTION: TRIPS IF GROUND AND
 NEUTRAL CONNECT AT
 LOAD SIDE.
 POWER ON INDICATION: LIGHTED GREEN LED.
 ENCLOSURE: RAIN PROOF, 3R
 MOUNTING TYPE: PORTABLE.
 WIRING APPLICATION: 3 WIRE SINGLE PHASE (HOT, NEUTRAL,
 GROUND)
 SWITCH INTERFACE: DOUBLE INSULATED
 LATCHING MECHANISM: ELECTROMAGNETIC
 FALSE TRIP DUE TO IMPACT: NONE
 AGENCY APPROVAL: c-UL-us

NOTES:
 1. 12/3 SJTW YELLOW CABLE 300V
 150 °C MAX/90°C MIN DRY,
 60°C WATER RESISTANT
 UL LISTED FOR US AND EITHER cULus
 OR CSA CERTIFIED FOR CANADA.
 - FLEXIBLE IN COLD WEATHER
 - RESISTANT TO CHEMICALS
 - UV WITHSTAND
 - ARC/FLAME RETARDANT
 TO BE COILED AND TIED WITH 8" ID.
 2. ALL DIMENSIONS ARE IN INCHES
 [mm] EXCEPT CABLE LENGTH IN FOOT.

1	NEW RELEASE PER DCN#230920033470. D.LI		9/5/23
REV	DESCRIPTION	APP	DATE
THE DESIGN AND DIMENSIONS OF THE PRODUCT SHOWN ON THIS DRAWING ARE SUBJECT TO CHANGE WITHOUT NOTICE. DIMENSIONS ARE IN INCHES [mm].			
TITLE 15A 120V GFCI PLUG W/MOLDED CONNECTOR, AUTO RESET			
		WIRING DEVICE-KELLEMS HUBBELL INCORPORATED SHELTON, CT	
TOLERANCES UNLESS OTHERWISE SPECIFIED .XX = ± .01 .XXX = ± .005 ANGLE TOL. ±2'		DR. BY D.LI	SCALE 1/4
		CHK. BY	DATE 9/5/23

DIMENSION SHEET FOR CAT. NO. **M-14730** | **1**
 SEE TABLE