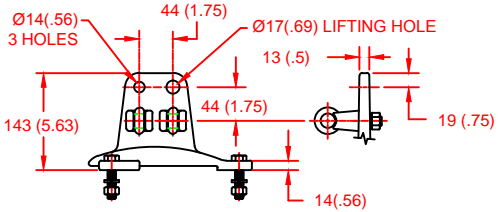
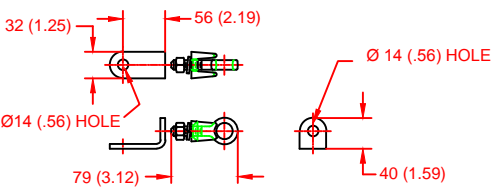


LINE TERMINAL DETAIL



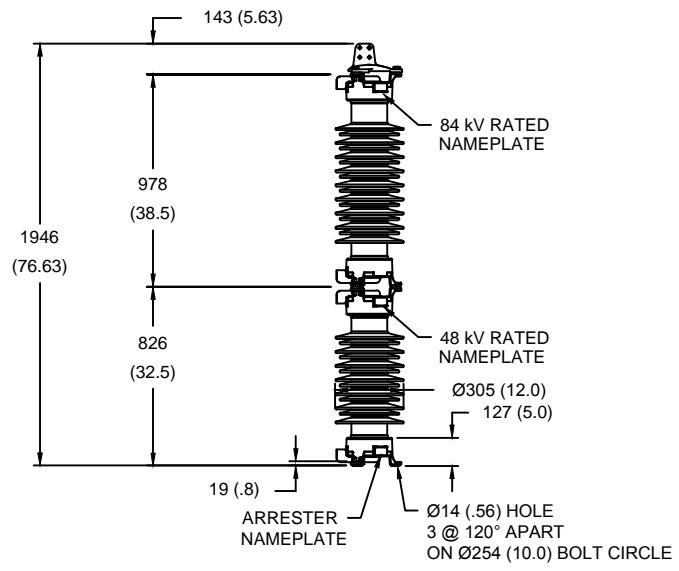
HDG 4-HOLE TERMINAL PAD, PART No. 901704001
 TWO HDG TERMINALS, PART No. 2714143001
 SUITABLE FOR COPPER OR ALUMINUM CONDUCTOR SIZE
 Ø 7 (.25) - Ø 21 (.81)
 25 - 240 sq mm
 AWG#4 - 500 MCM

GROUND TERMINAL DETAIL



HDG TERMINAL BRACKET, PART No. 896064001
 ONE HDG TERMINAL, PART No. 2714143001
 SUITABLE FOR COPPER OR ALUMINUM CONDUCTOR SIZE
 Ø 7 (.25) - Ø 21 (.81)
 25 - 240 sq mm
 AWG#4 - 500 MCM

Ø = DIAMETER
 HDG = HOT DIP GALVANIZED



CHARACTERISTICS	
RATED VOLTAGE, Ur	132 kVrms
MCOV, Uc	105.6 kVrms
MASS	171kg (377lb)
CREEPAGE DISTANCE	4445 (175.0)
LIGHTNING IMP W/S	801 kV
SWITCHING IMP W/S	702 kV
POWER FREQ W/S	371 kVrms
TOV 1s	146 kVrms
TOV 10s	137 kVrms
SLL BENDING FORCE	3494 N (785lbf)
SSL BENDING FORCE	8734 N (1963lbf)
COG ABOVE BASE	942 (37.1)
HOUSING	BROWN PORCELAIN

RECOMMENDED CLEARANCE (TO METAL PARTS)	
PHASE TO GROUND	597 (23.5)
PHASE TO PHASE	689 (27.1)

- NOTES:
 1. DIMENSIONS IN millimeters(inches) SUBJECT TO ±3% TOLERANCE
 2. CLEARANCE AND INSULATION W/S VOLTAGE APPLY AT SEA LEVEL
 3. ARRESTER SUITABLE FOR OPERATION AT ALTITUDES UP TO 3650m (12000ft)

RESIDUAL VOLTAGE (kV) FOR INDICATED IMPULSE TYPES AND CURRENT MAGNITUDES						
STEEP CURRENT IMPULSE	SWITCHING IMPULSE		8/20 LIGHTNING IMPULSE			
20 kA	0.5 kA	2 kA	5 kA	10 kA	20 kA	40 kA
412	258	274	296	310	332	366

IEC CLASS 4
 SURGE ARRESTER

Program Revision
 2018.12.3.03.25.15
 REV DATE 12/03/15

CONFIDENTIAL: THIS DRAWING AND ITS CONTENTS ARE CONFIDENTIAL AND THE EXCLUSIVE PROPERTY OF HUBBELL POWER SYSTEMS. NO PUBLICATION, DISTRIBUTION OR COPIES MAY BE MADE WITHOUT THE WRITTEN CONSENT OF HUBBELL POWER SYSTEMS. HUBBELL POWER SYSTEMS UNPUBLISHED ALL RIGHTS RESERVED UNDER THE COPYRIGHT LAWS.

TITLE			
MH4 ARRESTER 132 KV RATED VOLTAGE			
SIZE	DWG NO.	CAT / PART / ASSY NO.	REV
S	19831433	MH4170BH132AA	2
DO NOT SCALE THIS DRAWING	DRN BY	DATE	SHEET
	NON	03/22/11	1 OF 1

