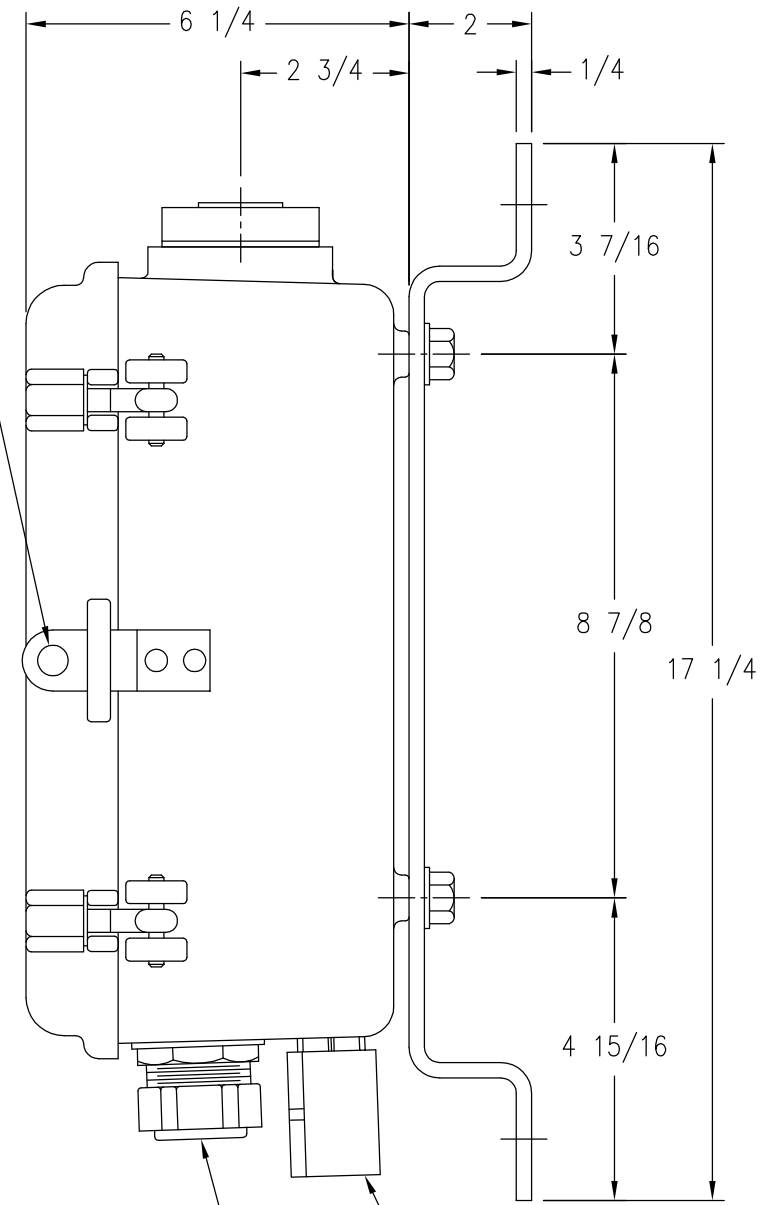


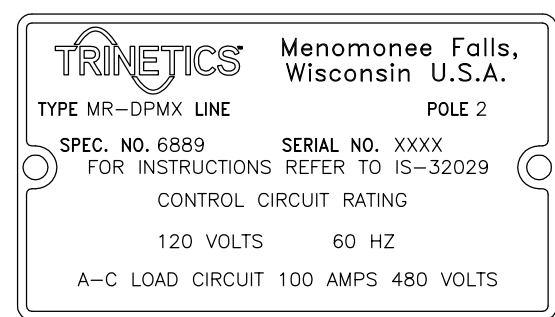
(2) COMPRESSION CONNECTORS WITH NEOPRENE BUSHINGS WITH OVAL HOLES FOR 0.547x0.89 TO 0.687x1.031 CABLE OD AND (2) GROMMETS 5/16 MAX CABLE OD

CONTROL TERMINALS WILL ACCEPT #6 THRU #14 AWG WIRE
LINE/LOAD TERMINALS WILL ACCEPT #4 THRU #1/0 AWG WIRE



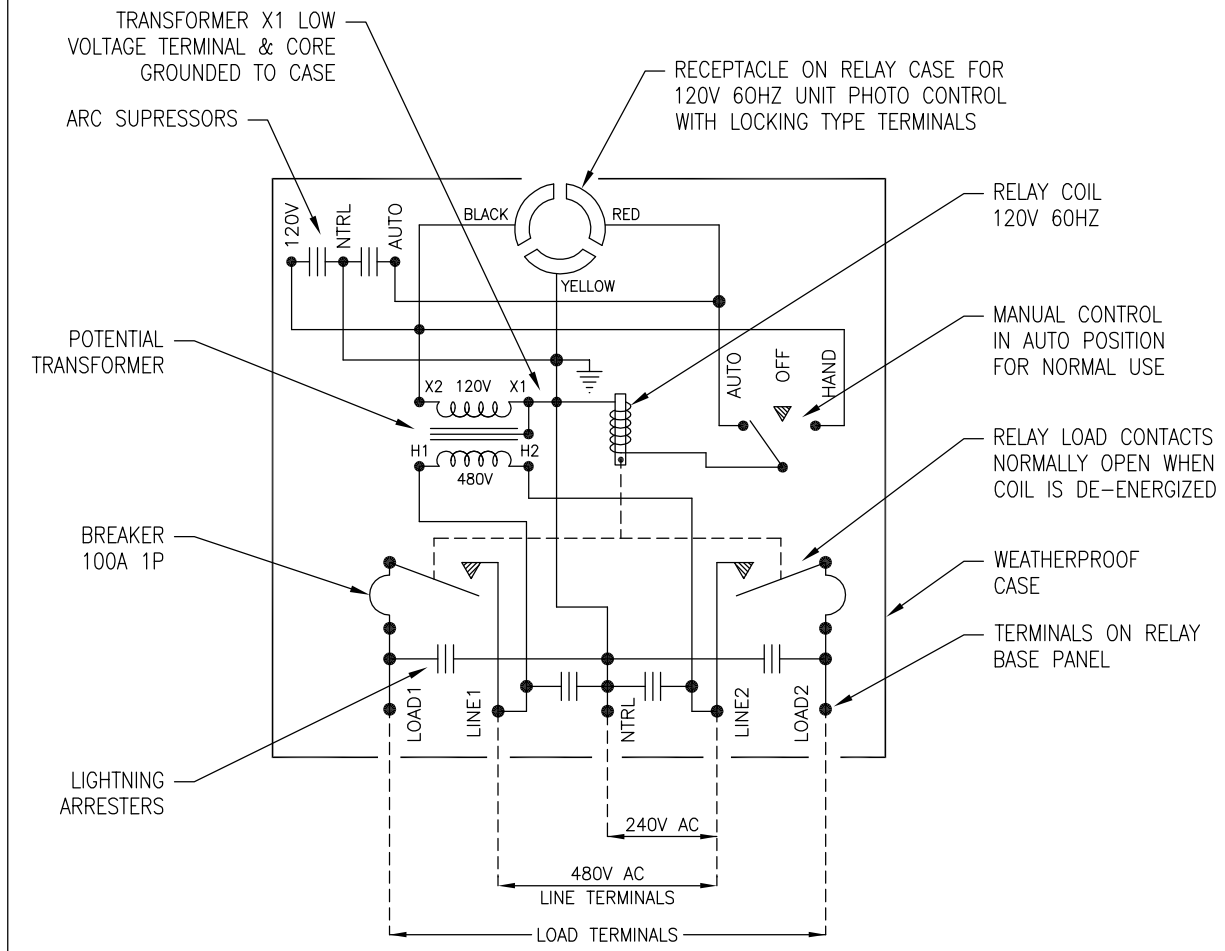
LIGHTNING ARRESTER 3-PH, 650V

CAST ALUMINUM WEATHERPROOF CASE WITH BRACKET



NAMEPLATE DETAIL

CONNECTIONS FOR TYPE MR-DPMX 2P RELAY
RATED 100A 480V 60HZ WITH PHOTO CONTROL UNIT



1. THE RECEPTACLE IS ADJUSTABLE FOR NORTH ORIENTATION IN ACCORDANCE WITH THE REQUIREMENTS OF EEI-STANDARD NO. TDJ-148.
2. THE PHOTO-CONTROL SHOULD OPERATE TO ENERGIZE THE RELAY COIL DURING THE ON SCHEDULE FOR THE STREET LIGHTING CIRCUIT.
3. SINCE STREET LIGHTING LOADS ARE CONTINUOUSLY ENERGIZED FOR LONG PERIODS, THE CONNECTED LOAD SHOULD NOT EXCEED 80% OF THE FUSE RATING. THE LOAD CALCULATIONS SHOULD BE BASED ON THE TOTAL AMPERE RATING OF THE BALLASTS, TRANSFORMERS, OR REACTORS AND NOT ON THE WATTAGE OF THE LAMPS.
4. THIS RELAY IS RECOMMENDED FOR SWITCHING THE POWER SUPPLY TO BALLASTS FOR A STREET LIGHTING LOAD WITH 85% MINIMUM POWER FACTOR.

THIS DRAWING AND ALL INFORMATION THEREON IS THE SOLE PROPERTY OF TRINETICS. IT MUST NOT BE COPIED, REPRODUCED OR SUBMITTED TO OTHERS WITHOUT WRITTEN AUTHORIZATION. ALL REPRODUCTIONS ARE SUBJECT TO RETURN ON DEMAND.

TRINETICS		RELAY ASSEMBLY MR-DPMX SPEC 6889		
	THIRD ANGLE PROJECTION	SIZE B	DRAWN BY M Matuszewski	DATE 12/10/11
	ALL DIMENSIONS ARE IN INCHES UNLESS OTHERWISE SPECIFIED	FAMILY ID C1643	APPROX. WEIGHT 24 LB	SCALE 5/16
				PART NUMBER 33202400