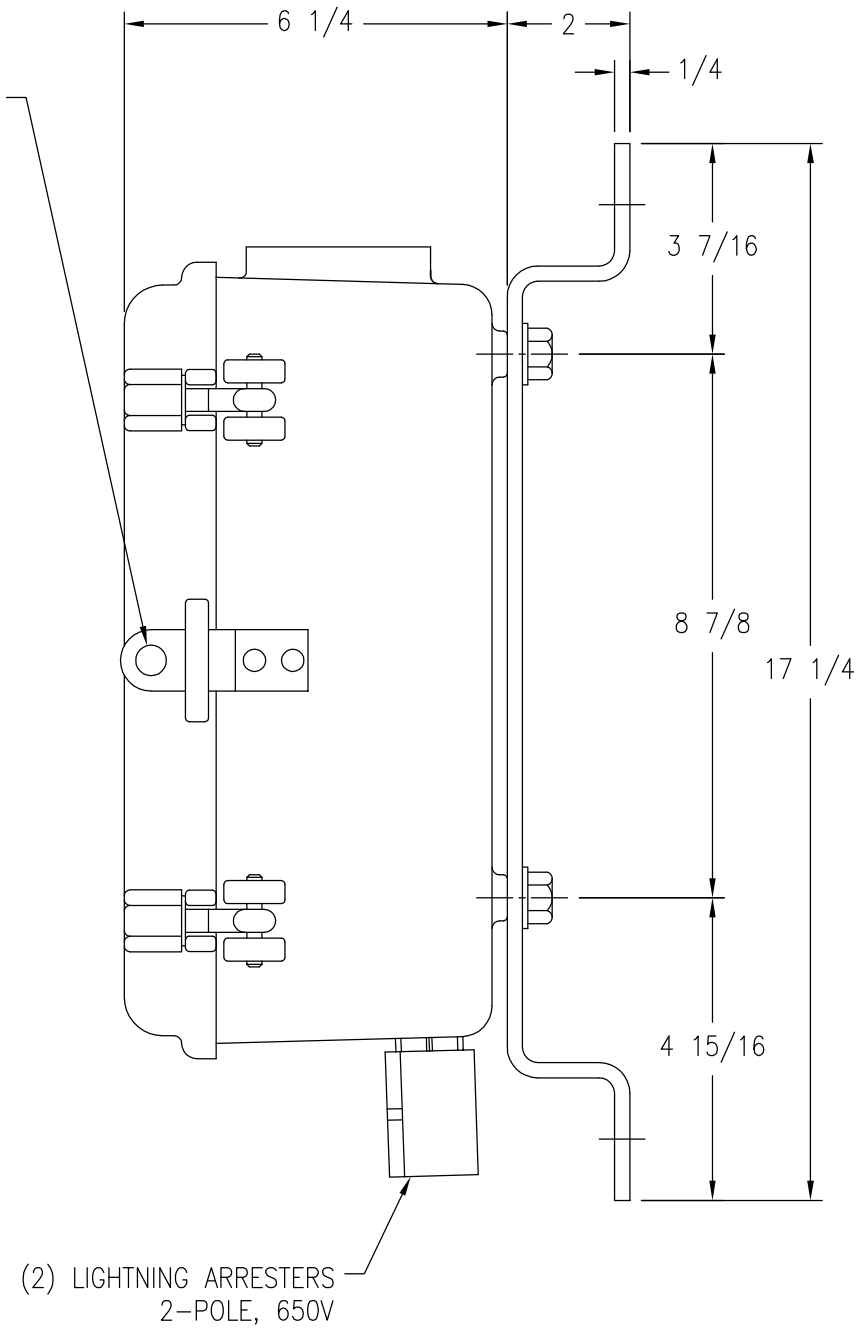
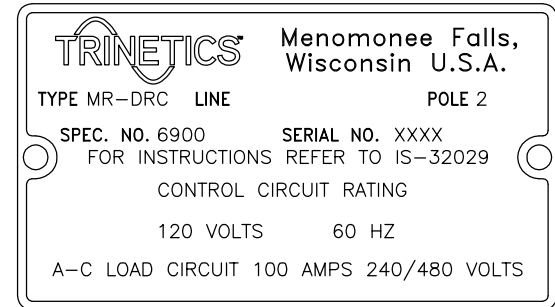


CONTROL TERMINALS WILL ACCEPT #6 THRU #14 AWG WIRE  
LINE/LOAD TERMINALS WILL ACCEPT #4 THRU #1/0 AWG WIRE

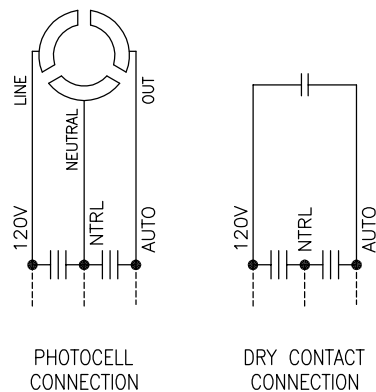
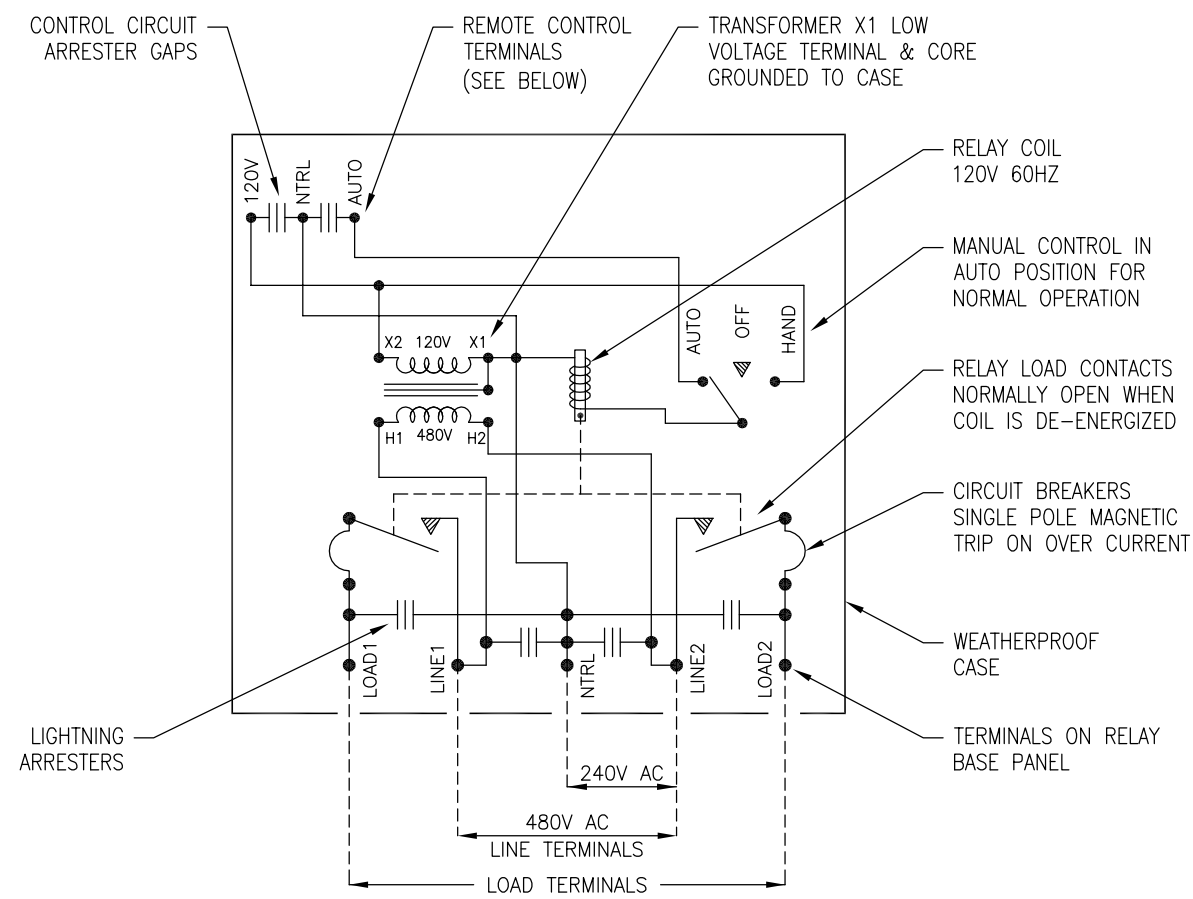


CAST ALUMINUM WEATHERPROOF CASE WITH BRACKET



NAMEPLATE DETAIL



CONNECTIONS FOR TYPE MR-DRC  
2P RELAY RATED 100A 240/480V 60HZ



REMOTE CONTROL CONNECTIONS

1. THE LOAD CIRCUIT RATING IS SHOWN ON THE NAMEPLATE. THIS RELAY IS RECOMMENDED FOR SWITCHING THE POWER TO LOADS WITH 85% MIN. POWER FACTOR.
2. RELAY LOADING SHOULD NOT EXCEED 80% OF THE CIRCUIT BREAKER RATING. THE CIRCUIT BREAKERS SUPPLIED WITH THESE RELAYS HAVE A 10,000 AMP SHORT CIRCUIT INTERRUPTING CAPACITY AT 250V AND A 5,000 AMP SHORT CIRCUIT INTERRUPTING CAPACITY AT 480V.

THIS DRAWING AND ALL INFORMATION THEREON IS THE SOLE PROPERTY OF TRINETICS. IT MUST NOT BE COPIED, REPRODUCED OR SUBMITTED TO OTHERS WITHOUT WRITTEN AUTHORIZATION. ALL REPRODUCTIONS ARE SUBJECT TO RETURN ON DEMAND.

		RELAY ASSEMBLY MR-DRC SPEC 6900			
	THIRD ANGLE PROJECTION	SIZE B	DRAWN BY M Matuszewski	DATE 12/17/11	PART NUMBER  33202401
ALL DIMENSIONS ARE IN INCHES UNLESS OTHERWISE SPECIFIED		FAMILY ID C1643	APPROX. WEIGHT 24 LB	SCALE 5/16	