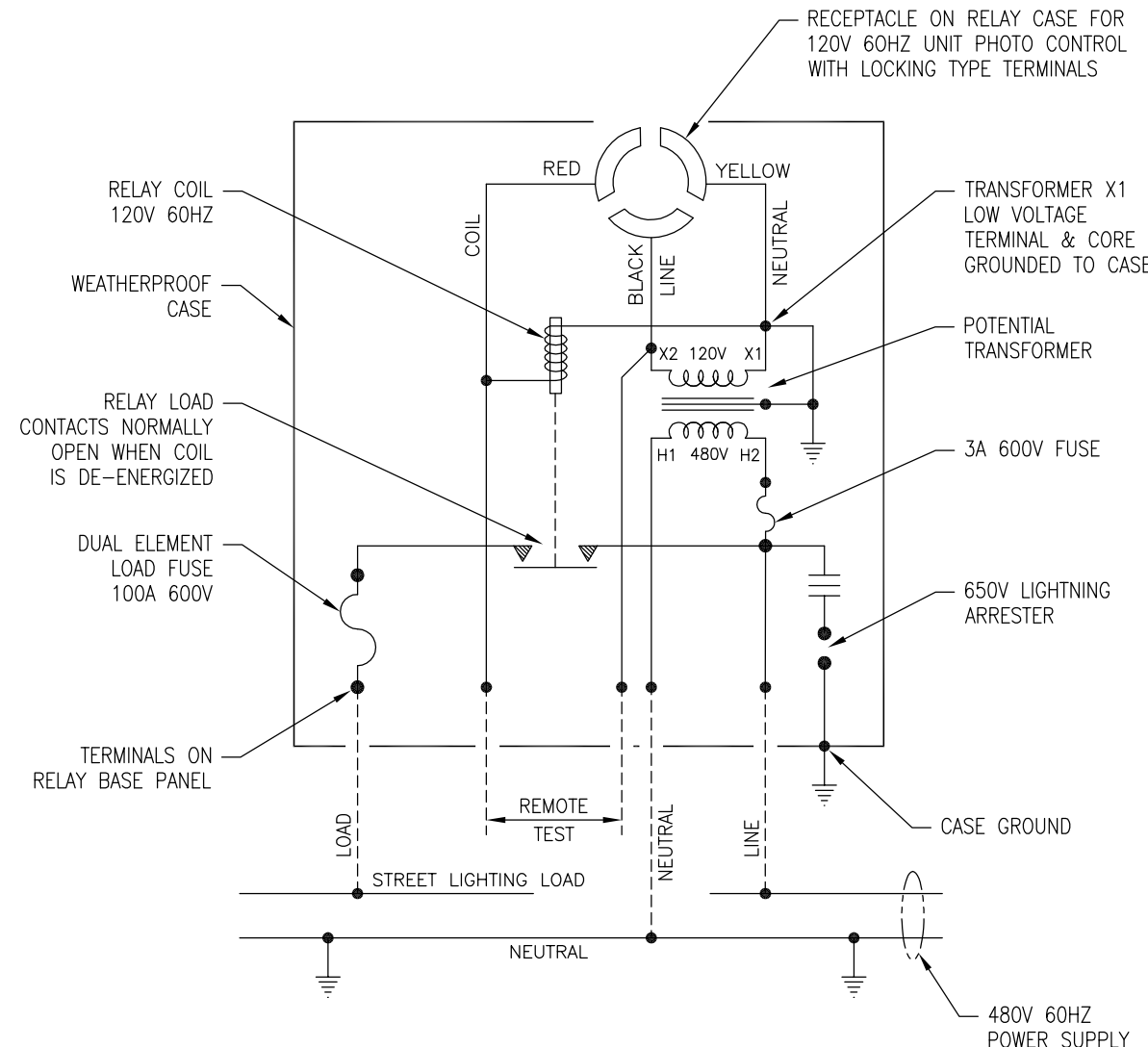


(2) COMPRESSION CONNECTORS WITH NEOPRENE BUSHINGS FOR .375-.500 OD CABLES AND (3) GROMMETS 5/16 MAX CABLE OD

CONTROL TERMINALS WILL ACCEPT #6 THRU #14 AWG WIRE
 LINE/LOAD TERMINALS WILL ACCEPT #4 THRU #1/0 AWG WIRE

CAST ALUMINUM WEATHERPROOF CASE WITH BRACKET

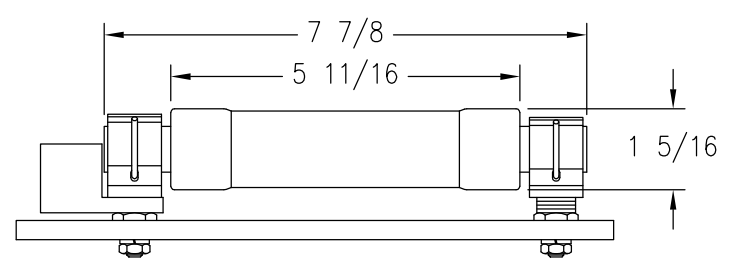
CONNECTIONS FOR TYPE MR-EMK 1P RELAY
 RATED 100A 480V 60HZ WITH PHOTO CONTROL UNIT



1. THE CASE MUST BE GROUNDED FOR THE LINE LIGHTNING ARRESTERS TO BE EFFECTIVE.
2. THE RECEPTACLE ON THE CASE IS ADJUSTABLE FOR NORTH ORIENTATION OF THE PHOTO CONTROL.
3. THE PHOTO CONTROL SHOULD OPERATE TO ENERGIZE THE RELAY COIL DURING THE ON SCHEDULE FOR THE STREET LIGHTING CIRCUIT.
4. STREET LIGHTING LOADS ARE CONTINUOUSLY ENERGIZED FOR LONG PERIODS, THE CONNECTED LOAD SHOULD NOT EXCEED 80% OF THE FUSE RATING.
5. THIS RELAY IS RECOMMENDED FOR SWITCHING THE POWER SUPPLY TO BALASTS FOR A STREET LIGHTING LOAD WITH 85% MINIMUM POWER FACTOR.

THIS DRAWING AND ALL INFORMATION THEREON IS THE SOLE PROPERTY OF TRINETICS. IT MUST NOT BE COPIED, REPRODUCED OR SUBMITTED TO OTHERS WITHOUT WRITTEN AUTHORIZATION. ALL REPRODUCTIONS ARE SUBJECT TO RETURN ON DEMAND.

		RELAY ASSEMBLY MR-EMK SPEC 6867		DATE	
				11/23/11	
THIRD ANGLE PROJECTION		SIZE B	DRAWN BY M Matuszewski	PART NUMBER 31187506	
ALL DIMENSIONS ARE IN INCHES UNLESS OTHERWISE SPECIFIED		FAMILY ID C1643	APPROX. WEIGHT 24 LB	SCALE 5/16	



FUSE - DUAL ELEMENT, TIME DELAY, CLASS RK5 - 600V/100A

TRINETICS Menomonee Falls, Wisconsin U.S.A.

TYPE MR-EMK LINE POLE 1

SPEC. NO. 6867 SERIAL NO. XXXX

FOR INSTRUCTIONS REFER IS-12256

CONTROL CIRCUIT RATING

120 VOLTS 60 HZ

A-C LOAD CIRCUIT 100 AMPS 480 VOLTS

NAMEPLATE DETAIL