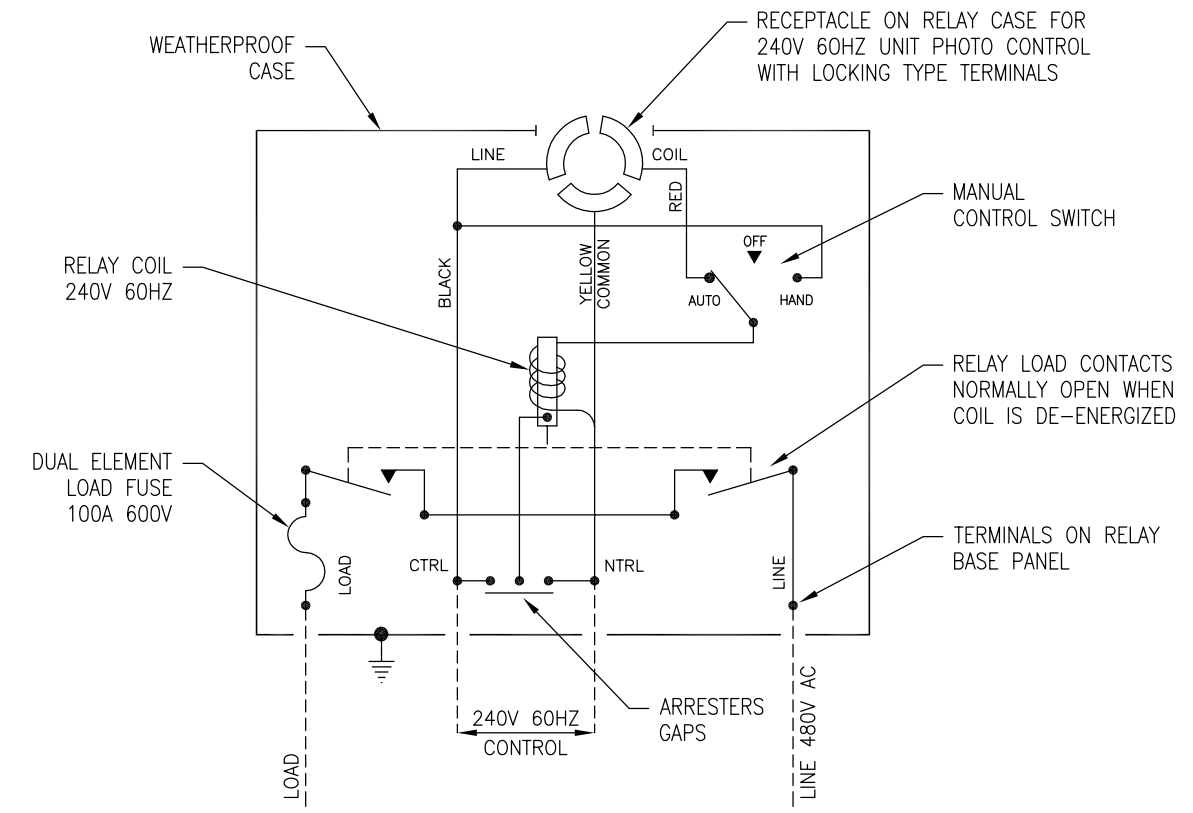


(2) COMPRESSION CONNECTORS WITH NEOPRENE BUSHINGS FOR .375-.500 OD CABLES AND (2) GROMMETS 5/16 MAX CABLE OD

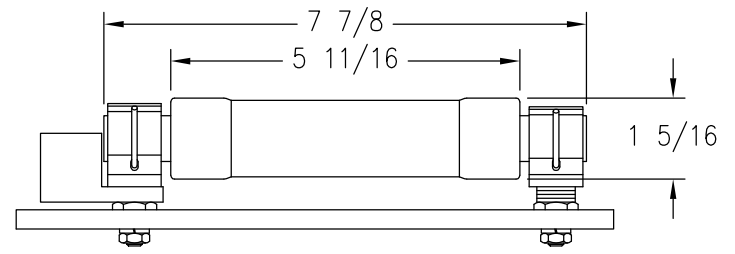
CONTROL TERMINALS WILL ACCEPT #6 THRU #14 AWG WIRE
 LINE/LOAD TERMINALS WILL ACCEPT #4 THRU #1/0 AWG WIRE

CAST ALUMINUM WEATHERPROOF CASE WITH BRACKET

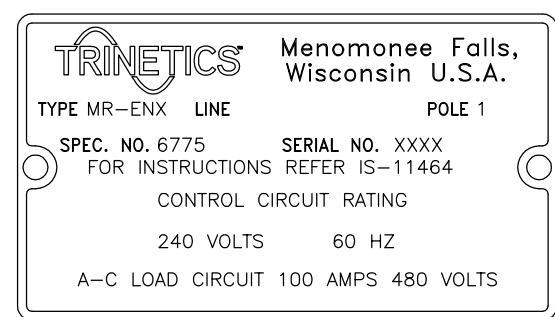
CONNECTIONS FOR TYPE MR-ENX 1P RELAY
 RATED 100A 480V 60HZ WITH PHOTO CONTROL UNIT



1. THE RECEPTACLE IS ADJUSTABLE FOR NORTH ORIENTATION IN ACCORDANCE WITH THE REQUIREMENTS OF EEI-STANDARD NO. TDJ-148.
2. THE PHOTO-CONTROL SHOULD OPERATE TO ENERGIZE THE RELAY COIL DURING THE ON SCHEDULE FOR THE STREET LIGHTING CIRCUIT.
3. SINCE STREET LIGHTING LOADS ARE CONTINUOUSLY ENERGIZED FOR LONG PERIODS, THE CONNECTED LOAD SHOULD NOT EXCEED 80% OF THE FUSE RATING. THE LOAD CALCULATIONS SHOULD BE BASED ON THE TOTAL AMPERE RATING OF THE BALLASTS, TRANSFORMERS, OR REACTORS AND NOT ON THE WATTAGE OF THE LAMPS.



FUSE - DUAL ELEMENT, CLASS RK5 - 600V/100A



NAMEPLATE DETAIL

THIS DRAWING AND ALL INFORMATION THEREON IS THE SOLE PROPERTY OF TRINETICS. IT MUST NOT BE COPIED, REPRODUCED OR SUBMITTED TO OTHERS WITHOUT WRITTEN AUTHORIZATION. ALL REPRODUCTIONS ARE SUBJECT TO RETURN ON DEMAND.

| | | | | | | | |
|---|--|--|--|----------------------|--|------------------------|--|
| | | RELAY ASSEMBLY MR-ENX SPEC 6775 | | DATE 11/29/11 | | PART NUMBER | |
| | | | | 33130700 | | DRAWN BY M Matuszewski | |
| THIRD ANGLE PROJECTION | | SIZE B | | APPROX. WEIGHT 24 LB | | SCALE 5/16 | |
| ALL DIMENSIONS ARE IN INCHES UNLESS OTHERWISE SPECIFIED | | | | FAMILY ID C1643 | | APPROX. WEIGHT 24 LB | |