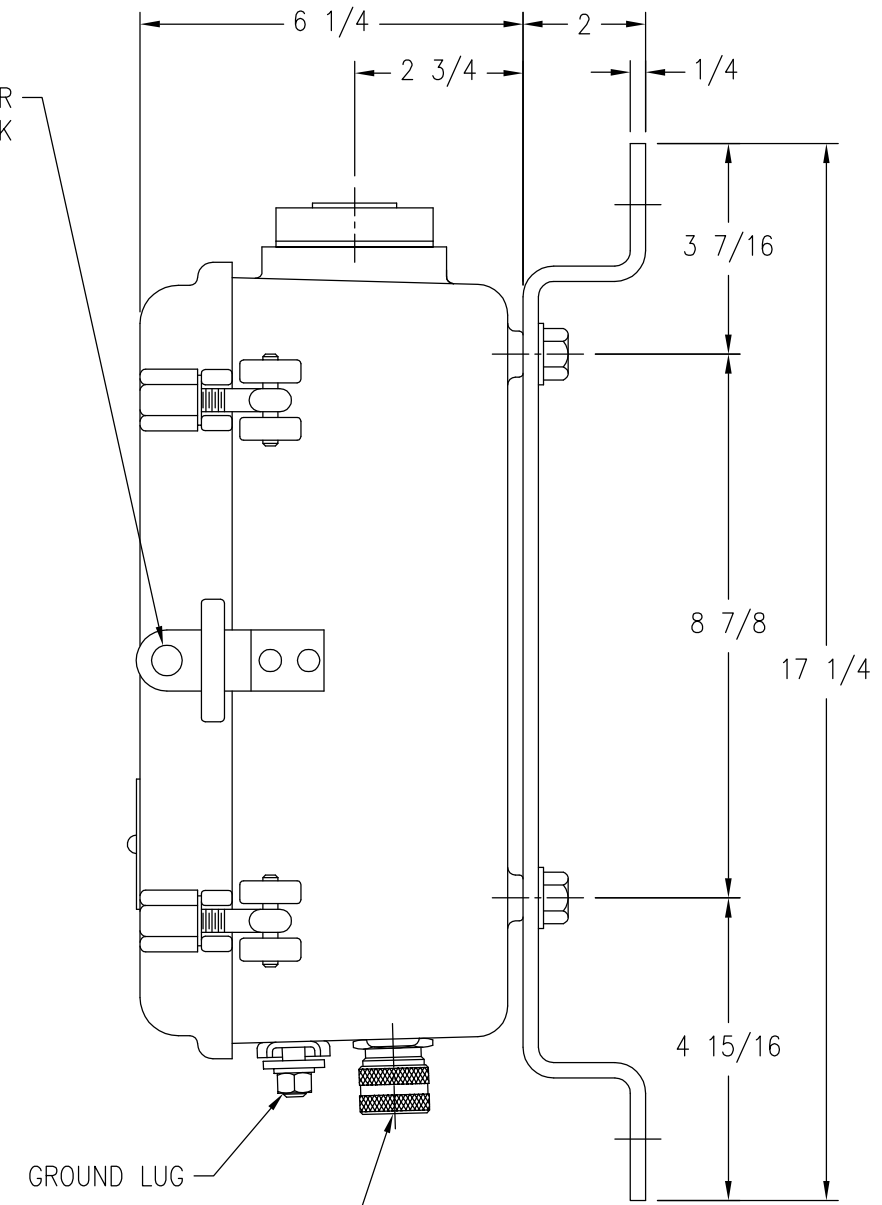


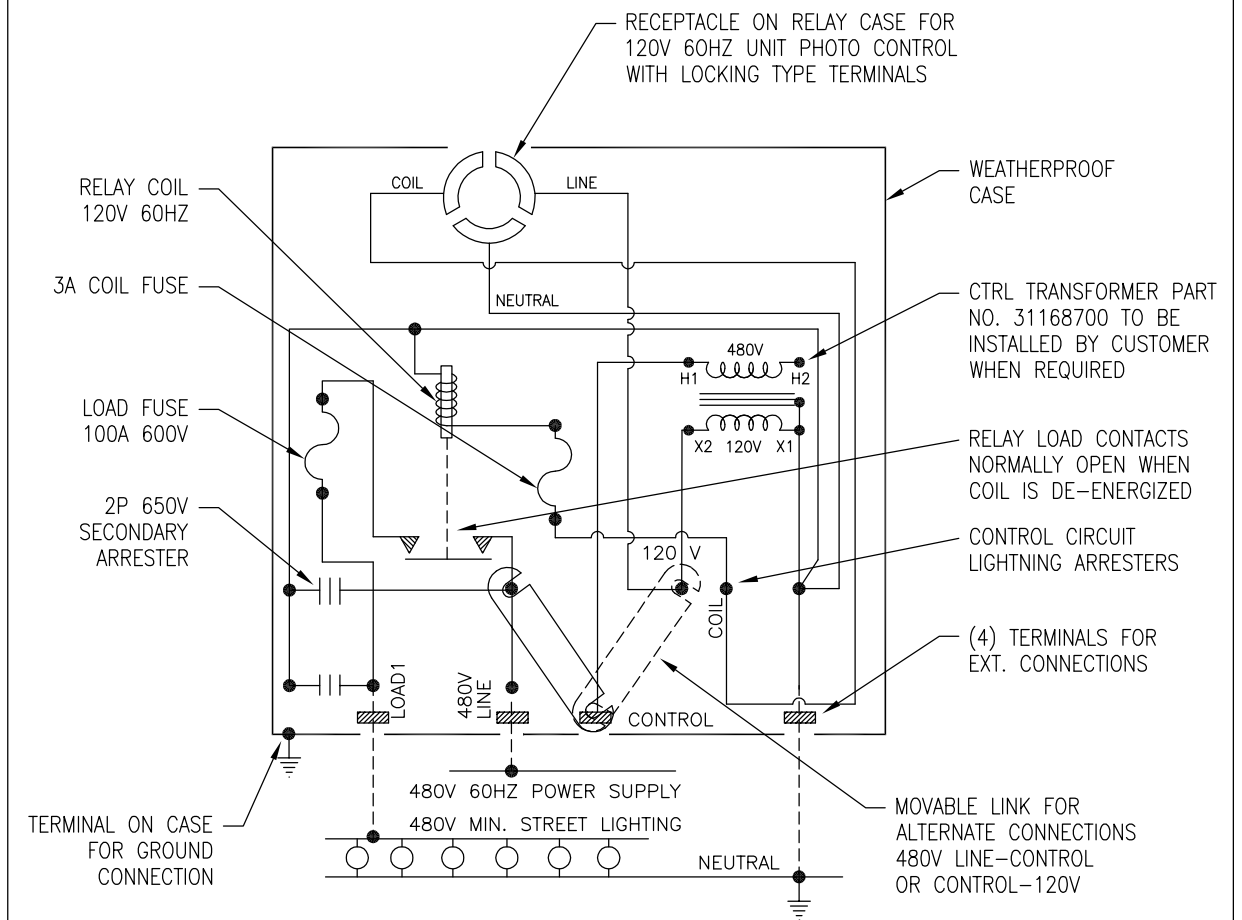
(2) COMPRESSION CONNECTORS WITH NEOPRENE BUSHINGS FOR .375-.500 OD CABLES,  
 (3) GROMMETS 5/16 MAX CABLE OD

CONTROL TERMINALS WILL ACCEPT #6 THRU #14 AWG WIRE  
 LINE/LOAD TERMINALS WILL ACCEPT #4 THRU #1/0 AWG WIRE



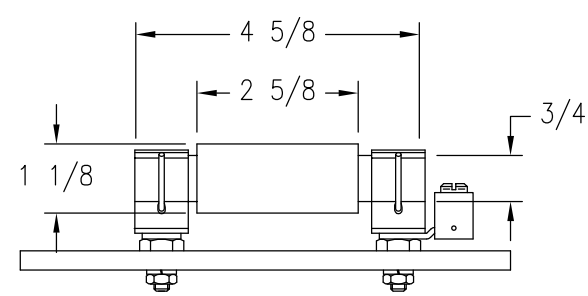
CAST ALUMINUM WEATHERPROOF CASE WITH BRACKET

CONNECTIONS FOR TYPE MR-ESA 1P RELAY RATED  
 100A 480V 60HZ WITH PHOTO CONTROL UNIT

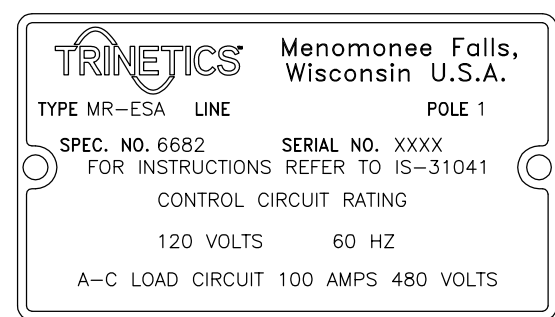


1. THE PHOTO CONTROL SHOULD OPERATE TO ENERGIZE THE 120V 60HZ RELAY COIL DURING THE ON SCHEDULE FOR THE MULTIPLE STREET LIGHTING LOAD.
2. WHEN CONTROL TRANSFORMER PART NO. 31168700 IS USED TO SUPPLY THE 120V 60HZ POWER TO THE PHOTO CONTROL UNIT AND THE RELAY OPERATING COIL, THE MOVABLE CONTROL LINK SHOULD BE POSITIONED BETWEEN THE TERMINALS MARKED "480V LINE" & "CONTROL".
3. WHEN AN EXTERNAL 120V 60HZ POWER SUPPLY IS USED TO SUPPLY POWER TO THE PHOTO CONTROL AND THE RELAY COIL, THE MOVABLE CONTROL LINK SHOULD BE POSITIONED BETWEEN TERMINALS MARKED "CONTROL" & "120V" AND THIS 120V POWER SUPPLY SHOULD BE CONNECTED TO THE TERMINAL MARKED "CONTROL".
4. FOR REMOTE CONTROL OPERATION FROM A 120V 60HZ PILOT CIRCUIT CONNECTED TO THE TERMINAL MARKED "CONTROL" THE MOVABLE CONTROL LINK SHOULD BE POSITIONED BETWEEN TERMINAL MARKED "CONTROL" & "120V" AND A CAP SHOULD BE INSERTED IN THE RECEPTACLE TO CONNECT COIL TO LINE.
5. THE TYPE MR-ESA 1P RELAY IS RECOMMENDED FOR SWITCHING THE RATED CURRENT ON A 480V 60HZ CIRCUIT WHICH ENERGIZES THE PRIMARY TO BALLASTS FOR A STREET LIGHTING LOAD WITH 85% MINIMUM POWER FACTOR.

THIS DRAWING AND ALL INFORMATION THEREON IS THE SOLE PROPERTY OF TRINETICS. IT MUST NOT BE COPIED, REPRODUCED OR SUBMITTED TO OTHERS WITHOUT WRITTEN AUTHORIZATION. ALL REPRODUCTIONS ARE SUBJECT TO RETURN ON DEMAND.



FUSE - DUAL ELEMENT, TIME DELAY, CLASS J - 600V/100A



NAMEPLATE DETAIL

		<b>RELAY ASSEMBLY</b> <b>MR-ESA SPEC 6682</b>		DATE 11/14/11		PART NUMBER	
				33227000			
THIRD ANGLE PROJECTION	SIZE B	DRAWN BY M Matuszewski	APPROX. WEIGHT 24 LB	SCALE 5/16	ALL DIMENSIONS ARE IN INCHES UNLESS OTHERWISE SPECIFIED		