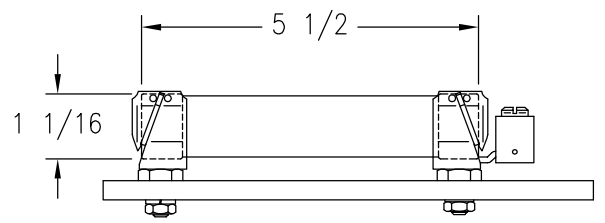


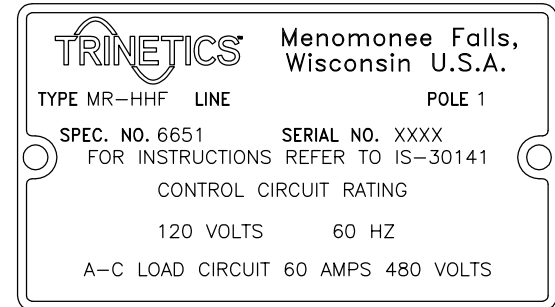
(4) COMPRESSION CONNECTORS WITH NEOPRENE BUSHINGS FOR .375-.500 OD CABLES AND (1) CONNECTOR FOR .625-.750 OD CABLE

CAST ALUMINUM WEATHERPROOF CASE WITH BRACKET

CONTROL TERMINALS WILL ACCEPT #6 THRU #14 AWG WIRE
LINE/LOAD TERMINALS WILL ACCEPT #4 THRU #1/0 AWG WIRE

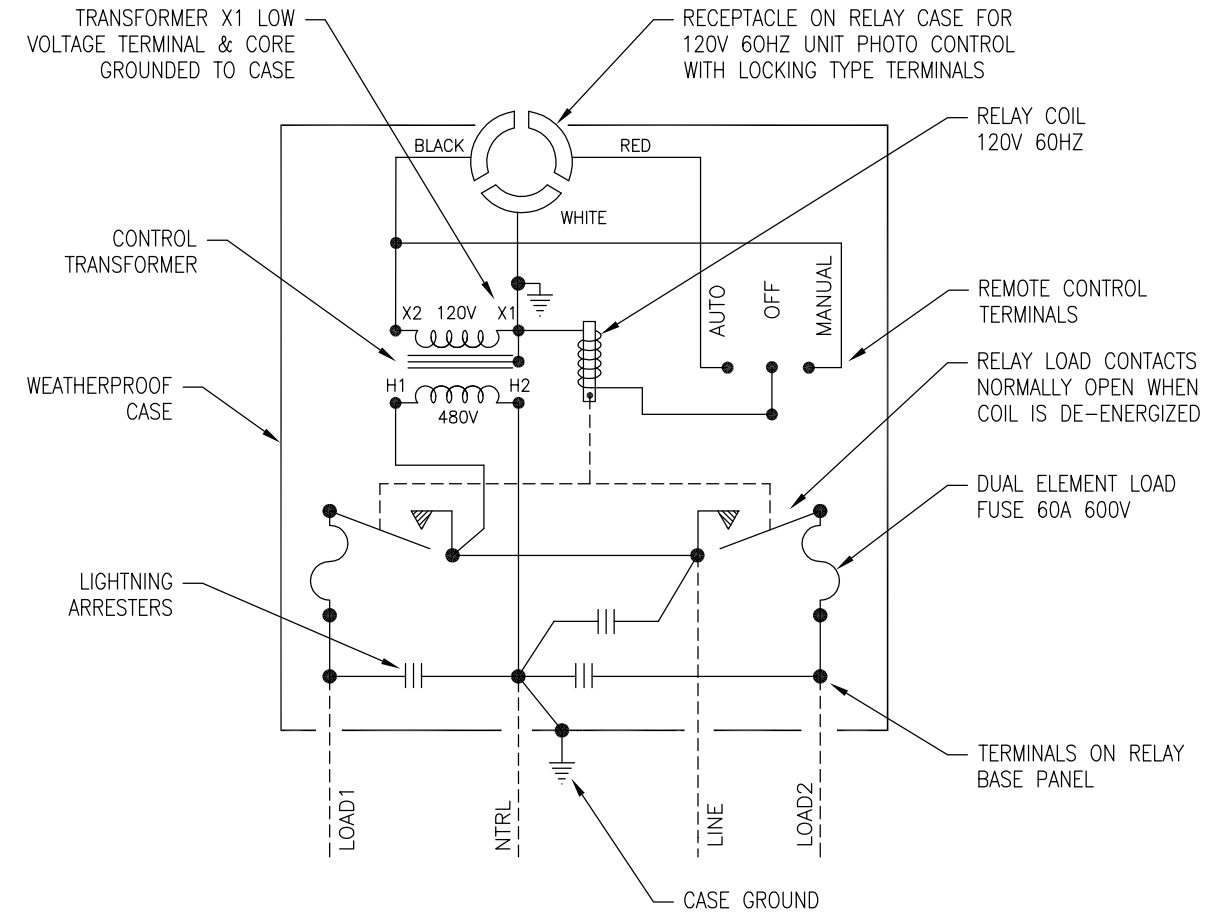


FUSE - DUAL ELEMENT, TIME DELAY, CLASS RK5 - 600V/60A



NAMEPLATE DETAIL

CONNECTIONS FOR TYPE MR-HHF 1P RELAY RATED 60A 480V 60HZ WITH PHOTO CONTROL UNIT



1. THE WEATHERPROOF CASE MUST BE EFFECTIVELY GROUNDING.
2. THE UNIT IS PROVIDED WITH LINE AND LOAD LIGHTNING ARRESTERS MOUNTED EXTERNALLY ON THE CASE.
3. THE RECEPTACLE IS ADJUSTABLE FOR NORTH ORIENTATION.
4. THE PHOTO CONTROL SHOULD OPERATE TO ENERGIZE THE COIL DURING THE ON SCHEDULE FOR THE STREET LIGHTING CIRCUIT.
5. STREET LIGHTING LOADS ARE CONTINUOUSLY ENERGIZED FOR LONG PERIODS, AND THE CONNECTED LOAD SHOULD NOT EXCEED 80% OF THE FUSE RATING.
6. THIS RELAY WITH SINGLE BREAK CONTACTS SHOULD NOT BE USED FOR SWITCHING 480V STREET LIGHTING LOAD HAVING A POWER FACTOR OF LESS THAN 90%.

THIS DRAWING AND ALL INFORMATION THEREON IS THE SOLE PROPERTY OF TRINETICS. IT MUST NOT BE COPIED, REPRODUCED OR SUBMITTED TO OTHERS WITHOUT WRITTEN AUTHORIZATION. ALL REPRODUCTIONS ARE SUBJECT TO RETURN ON DEMAND.

		RELAY ASSEMBLY MR-HHF SPEC 6651		DATE 11/12/11		PART NUMBER	
				33088200			
THIRD ANGLE PROJECTION	SIZE B	DRAWN BY M Matuszewski	APPROX. WEIGHT 24 LB	SCALE 5/16			
ALL DIMENSIONS ARE IN INCHES UNLESS OTHERWISE SPECIFIED		FAMILY ID C1643					