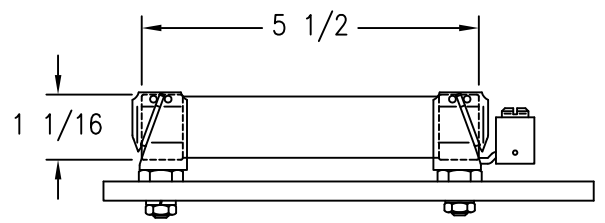


(3) GROMMETS 5/16 MAX CABLE OD

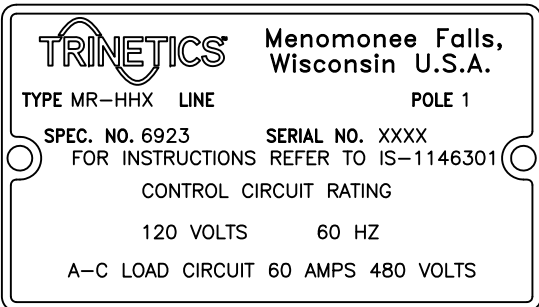
GROUND LUG
 (2) 3/8-16 THREADED MOUNTING HOLES CENTERED VERTICALLY ON ENCLOSURE

CONTROL TERMINALS WILL ACCEPT #6 THRU #14 AWG WIRE
 LINE/LOAD TERMINALS WILL ACCEPT #4 THRU #1/0 AWG WIRE

CAST ALUMINUM WEATHERPROOF CASE WITH BRACKET

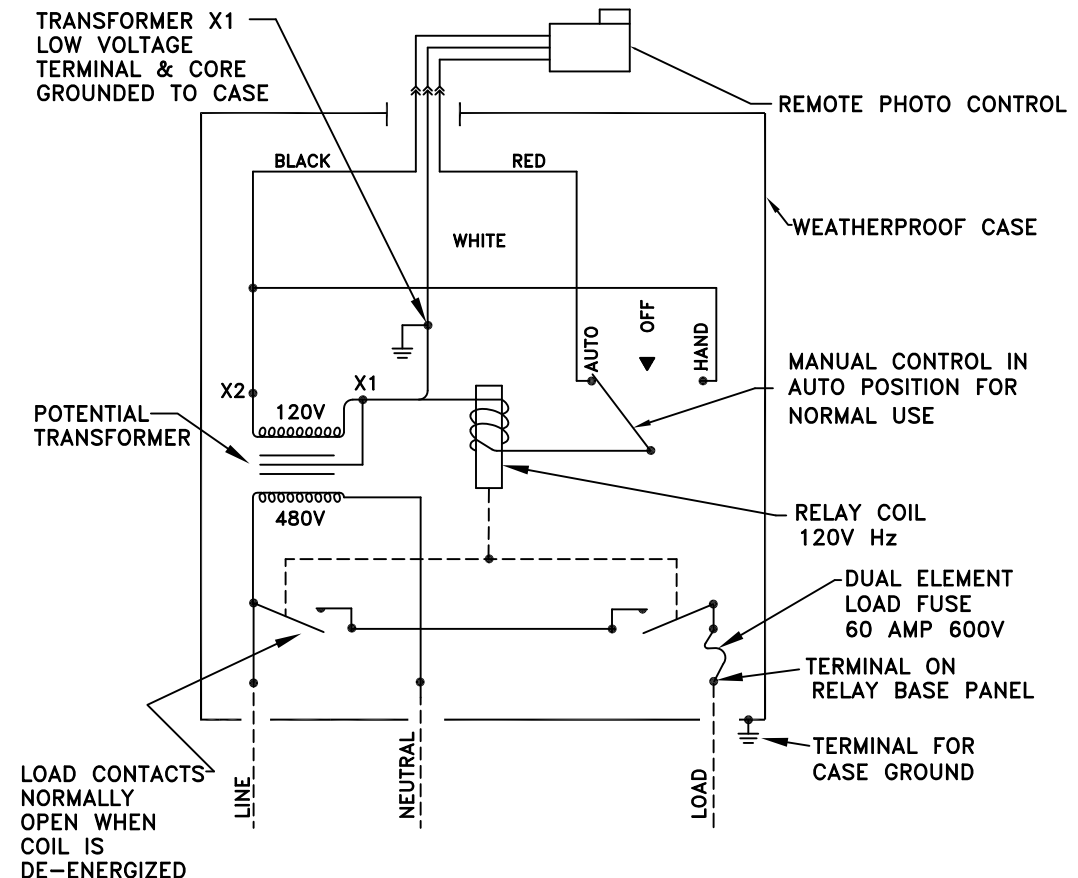


FUSE - DUAL ELEMENT, TIME DELAY, CLASS RK5 - 600V/60A



NAMEPLATE DETAIL

CONNECTIONS FOR TYPE MR-HHX 1P RELAY RATED 60A 480V 60HZ WITH EXTERNAL PHOTO CONTROL



- 1-THE WEATHERPROOF CASE MUST BE EFFECTIVELY GROUNDING.
 - 2-THIS CONTROL UNIT DOES NOT INCLUDE BUILT-IN LIGHTNING ARRESTERS. SEPARATELY MOUNTED ARRESTERS MUST BE PROVIDED FOR APPLICATIONS ON WHICH THE LINE OR LOAD CIRCUITS HAVE EXPOSURE TO LIGHTNING SURGES.
 - 3-THE PHOTO CONTROL SHOULD OPERATE TO ENERGIZE THE RELAY COIL DURING THE "ON" SCHEDULE FOR THE STREET LIGHTING CONTROL.
 - 4-APPLICATIONS ON WHICH THE LINE OR LOAD CIRCUITS HAVE EXPOSURE TO LIGHTNING SURGES.
 - 5-THIS RELAY IS RECOMMENDED FOR SWITCHING THE POWER TO BALLASTS FOR A STREET LIGHTING LOAD WITH 85% MINIMUM POWER FACTOR.
- STREET LIGHTING LOADS ARE CONTINUOUSLY ENERGIZED FOR LONG PERIODS, AND THE CONNECTED LOAD SHOULD NOT EXCEED 80% OF THE FUSE RATING.

THIS DRAWING AND ALL INFORMATION THEREON IS THE SOLE PROPERTY OF TRINETICS. IT MUST NOT BE COPIED, REPRODUCED OR SUBMITTED TO OTHERS WITHOUT WRITTEN AUTHORIZATION. ALL REPRODUCTIONS ARE SUBJECT TO RETURN ON DEMAND.

| | | | | |
|---|--|--|-------------------------|--------------------------------|
| | | RELAY ASSEMBLY MR-HHX SPEC 6923 | | |
| | | DRAWN BY G Pietschmann | DATE 3/4/12 | PART NUMBER 31197201 |
| ALL DIMENSIONS ARE IN INCHES UNLESS OTHERWISE SPECIFIED | | FAMILY ID C1643 | APPROX. WEIGHT 24 LB | SCALE FULL |