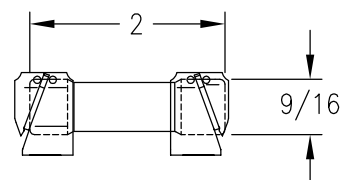


PHENOLIC WEATHERPROOF CASE, BROWN



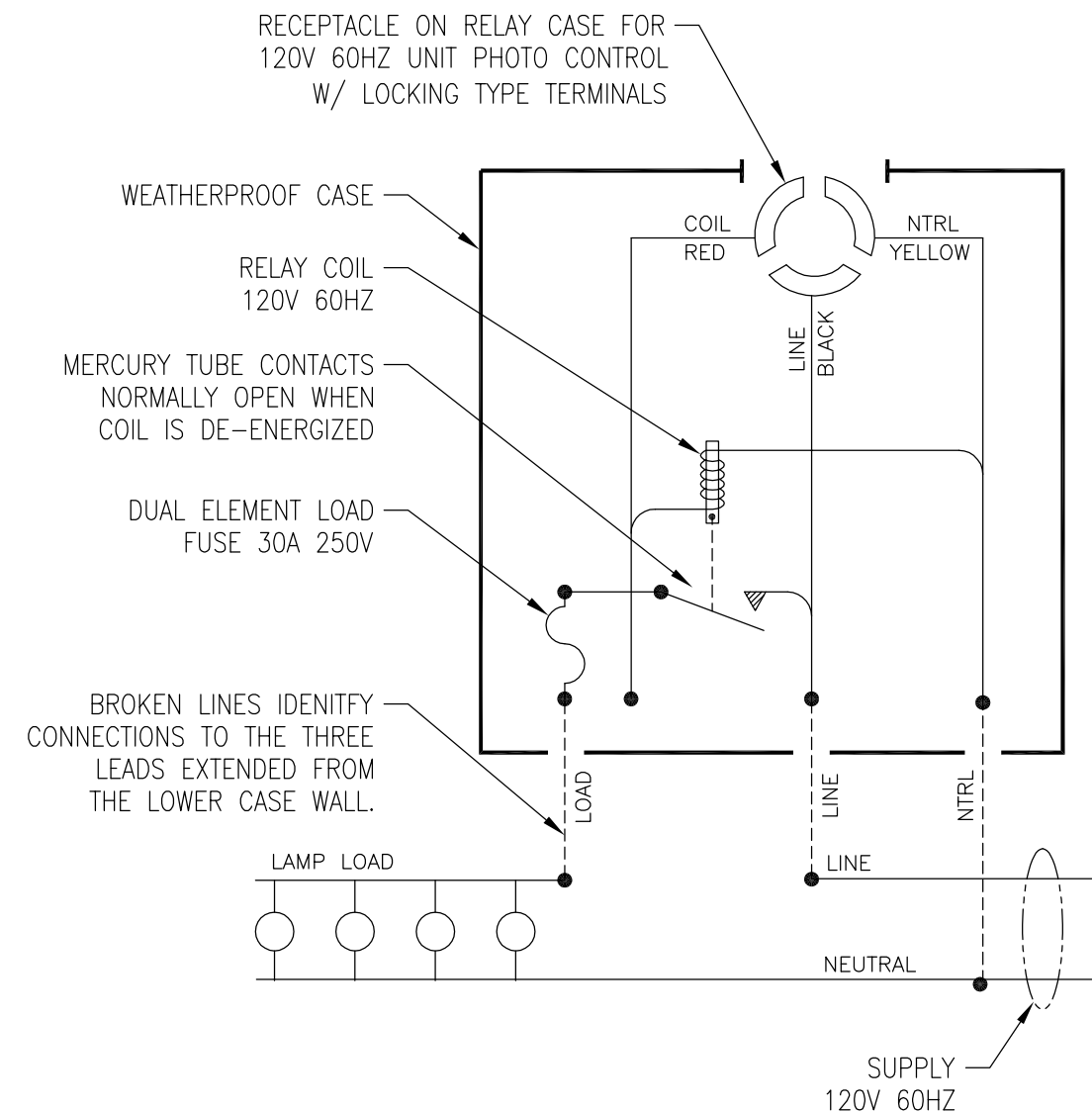
FUSE - DUAL ELEMENT, TIME DELAY, CLASS RK5 - 250V/30A

**CONTACTS
NORMALLY
OPEN**

TRINETICS RELAY	
TYPE	MR-TG
SPEC. NO.	SERIAL NO.
6355	XXXX
INSTRUCTION 11153	
LOAD RATING	
POLES	AMPS VOLTS AC
1	30 120/240
CONTROL RATING	
120 VOLTS	60 CYC.
TRINETICS	
MENOMONEE FALLS WI, U.S.A.	
31070900	

NAMEPLATE DETAIL

WIRING DIAGRAM



THE ASSEMBLY OF THE TERMINALS PROVIDES A MULTI-GAP BREAKDOWN PATH BETWEEN ANY TWO TERMINALS. THE INSULATION LEVEL OF THE OPERATING COIL AND CONTACT MECHANISM IS COORDINATED WITH THE IMPULSE LEVEL OF THE EXPULSION GAP TERMINALS. SINCE STREET LIGHTING LOADS ARE CONTINUOUSLY ENERGIZED FOR LONG PERIODS, THE CONNECTED LOAD SHOULD NOT EXCEED 80% OF THE FUSE RATING.

THIS DRAWING AND ALL INFORMATION THEREON IS THE SOLE PROPERTY OF TRINETICS. IT MUST NOT BE COPIED, REPRODUCED OR SUBMITTED TO OTHERS WITHOUT WRITTEN AUTHORIZATION. ALL REPRODUCTIONS ARE SUBJECT TO RETURN ON DEMAND.

TRINETICS		RELAY ASSEMBLY	
		MR-TG SPEC 6355	
 THIRD ANGLE PROJECTION	SIZE B	DRAWN BY M Matuszewski	DATE 12/05/11
	FAMILY ID C1643	APPROX. WEIGHT 4 LB	SCALE 1/2
			PART NUMBER 31123000