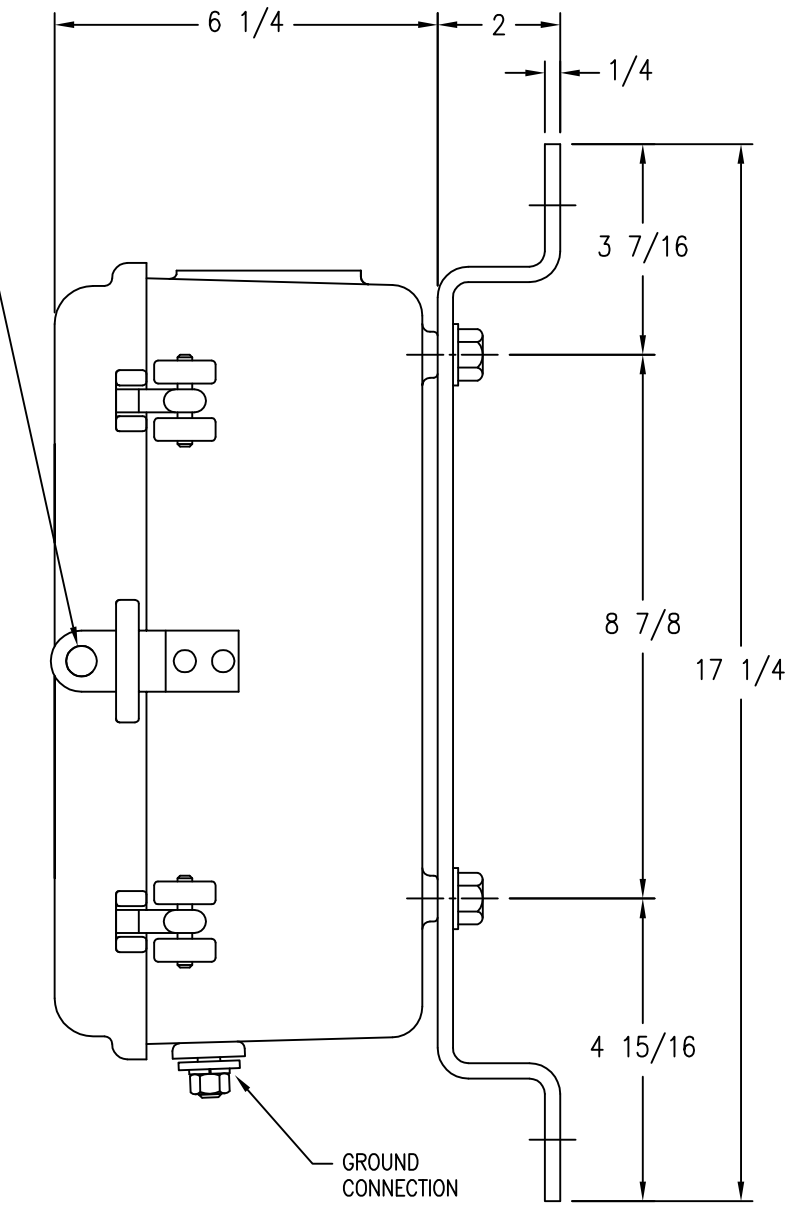
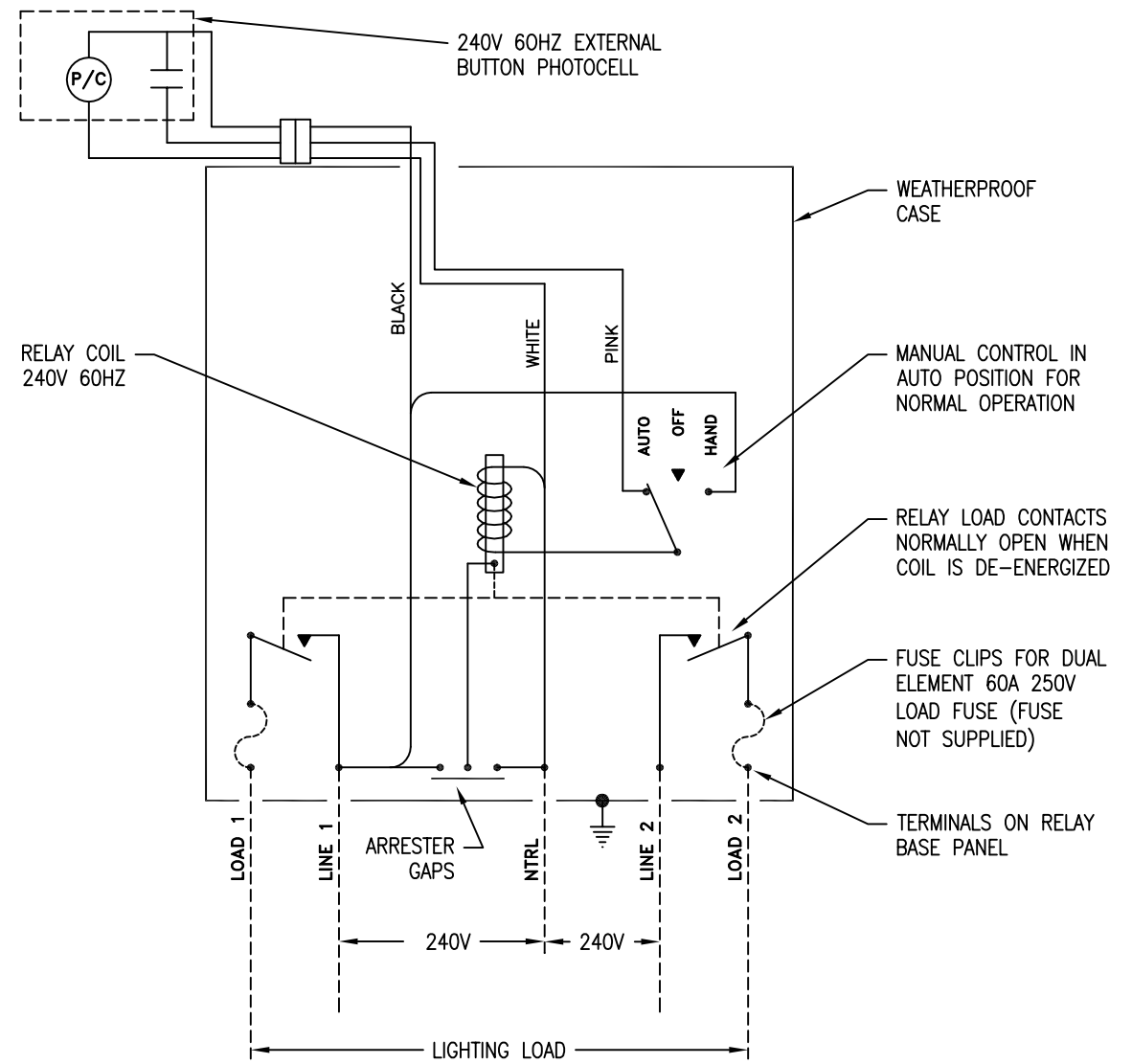


CONTROL TERMINALS WILL ACCEPT #6 THRU #14 AWG WIRE
 LINE/LOAD TERMINALS WILL ACCEPT #4 THRU #1/0 AWG WIRE

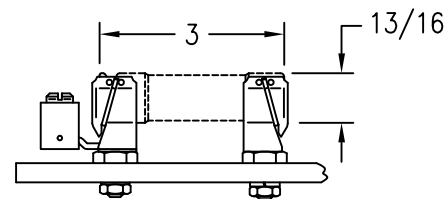


CAST ALUMINUM WEATHERPROOF CASE WITH BRACKET

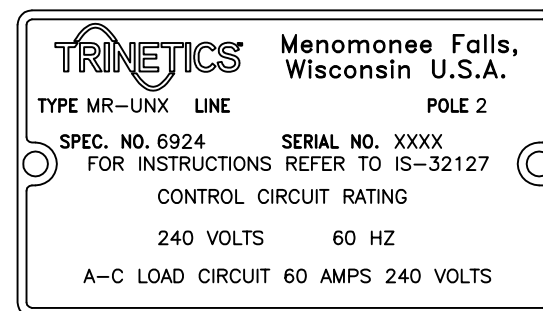
**CONNECTIONS FOR TYPE MR-UNX
 2P RELAY RATED 60A 240V 60HZ**



1. THE WEATHERPROOF CASE MUST BE EFFECTIVELY GROUNDED.
2. THE PHOTO CONTROL SHOULD OPERATE TO ENERGIZE THE RELAY COIL DURING THE ON SCHEDULE FOR THE STREET LIGHTING CIRCUIT WHEN THE MANUAL CONTROL IS IN THE AUTO POSITION. THE OPERATING COIL IS ENERGIZED FROM THE LINE WHEN THE MANUAL CONTROL IS IN THE HAND POSITION.
3. STREET LIGHTING LOADS ARE CONTINUOUSLY ENERGIZED FOR LONG PERIODS, AND THE CONNECTED LOAD SHOULD NOT EXCEED 80% OF THE FUSE RATING. THE LOAD CALCULATIONS SHOULD BE BASED ON THE TOTAL AMPERE RATING OF THE BALLASTS, TRANSFORMERS, OR REACTORS AND NOT ON THE WATTAGE OF THE LAMPS.



FUSE - DUAL ELEMENT, TIME DELAY, CLASS RK5 - 250V/60A
 (FUSES ARE NOT SUPPLIED WITH RELAY)



NAMEPLATE DETAIL

THIS DRAWING AND ALL INFORMATION THEREON IS THE SOLE PROPERTY OF TRINETICS. IT MUST NOT BE COPIED, REPRODUCED OR SUBMITTED TO OTHERS WITHOUT WRITTEN AUTHORIZATION. ALL REPRODUCTIONS ARE SUBJECT TO RETURN ON DEMAND.

		RELAY ASSEMBLY MR-UNX SPEC 6924				
				THIRD ANGLE PROJECTION	SIZE B	DRAWN BY B Traska
ALL DIMENSIONS ARE IN INCHES UNLESS OTHERWISE SPECIFIED		FAMILY ID C1643	APPROX. WEIGHT 24 LB	SCALE 5/16	31197202	