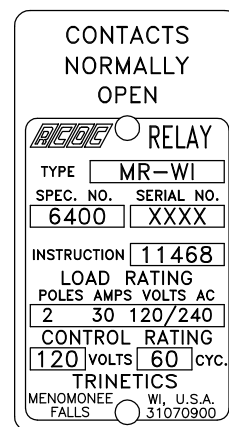
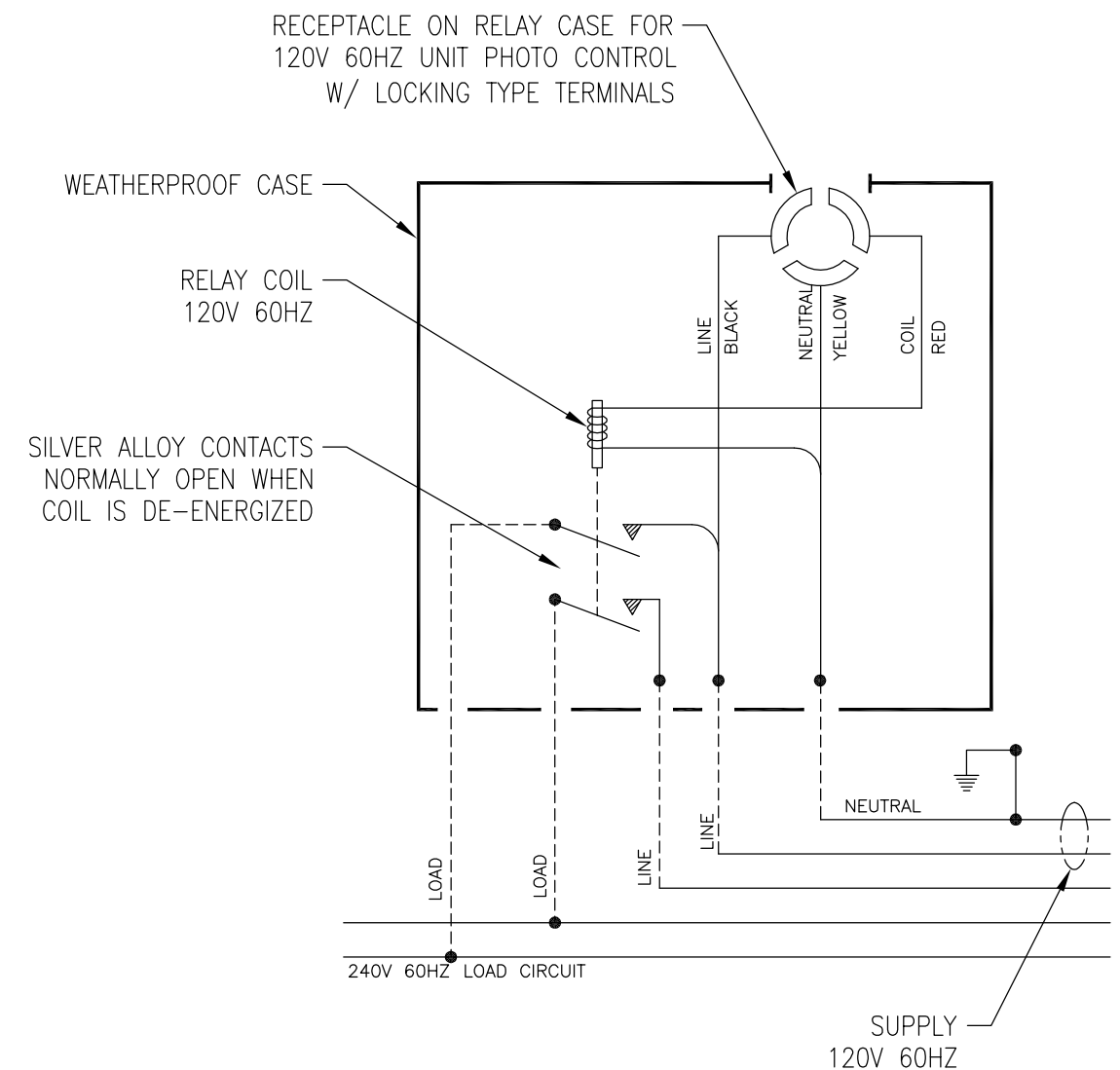


PHENOLIC WEATHERPROOF CASE, BROWN



NAMEPLATE DETAIL

WIRING DIAGRAM



1. THE RECEPTACLE IS ADJUSTABLE FOR NORTH ORIENTATION IN ACCORDANCE WITH THE REQUIREMENTS OF EEI-STANDARD NO. TDJ-148.
2. THE PHOTO CONTROL SHOULD OPERATE TO ENERGIZE THE RELAY COIL DURING THE ON SCHEDULE FOR THE STREET LIGHTING CIRCUIT.
3. THE ASSEMBLY OF THE COIL, NEUTRAL, AND LINE TERMINALS PROVIDE MULTI-GAP BREAKDOWN PATHS BETWEEN ANY TWO OF THESE TERMINALS. THE INSULATION LEVEL OF THE RELAY COIL AND THE CONTACT MECHANISM IS COORDINATED WITH THE IMPULSE LEVEL OF LINE AND NTRL EXPULSION GAP TERMINALS.

THIS DRAWING AND ALL INFORMATION THEREON IS THE SOLE PROPERTY OF TRINETICS. IT MUST NOT BE COPIED, REPRODUCED OR SUBMITTED TO OTHERS WITHOUT WRITTEN AUTHORIZATION. ALL REPRODUCTIONS ARE SUBJECT TO RETURN ON DEMAND.

TRINETICS		RELAY ASSEMBLY	
		MR-WI SPEC 6400	
	THIRD ANGLE PROJECTION	SIZE B	DRAWN BY M Matuszewski
			DATE 11/19/11
ALL DIMENSIONS ARE IN INCHES UNLESS OTHERWISE SPECIFIED	FAMILY ID C1643	APPROX. WEIGHT 4 LB	PART NUMBER
			31152500