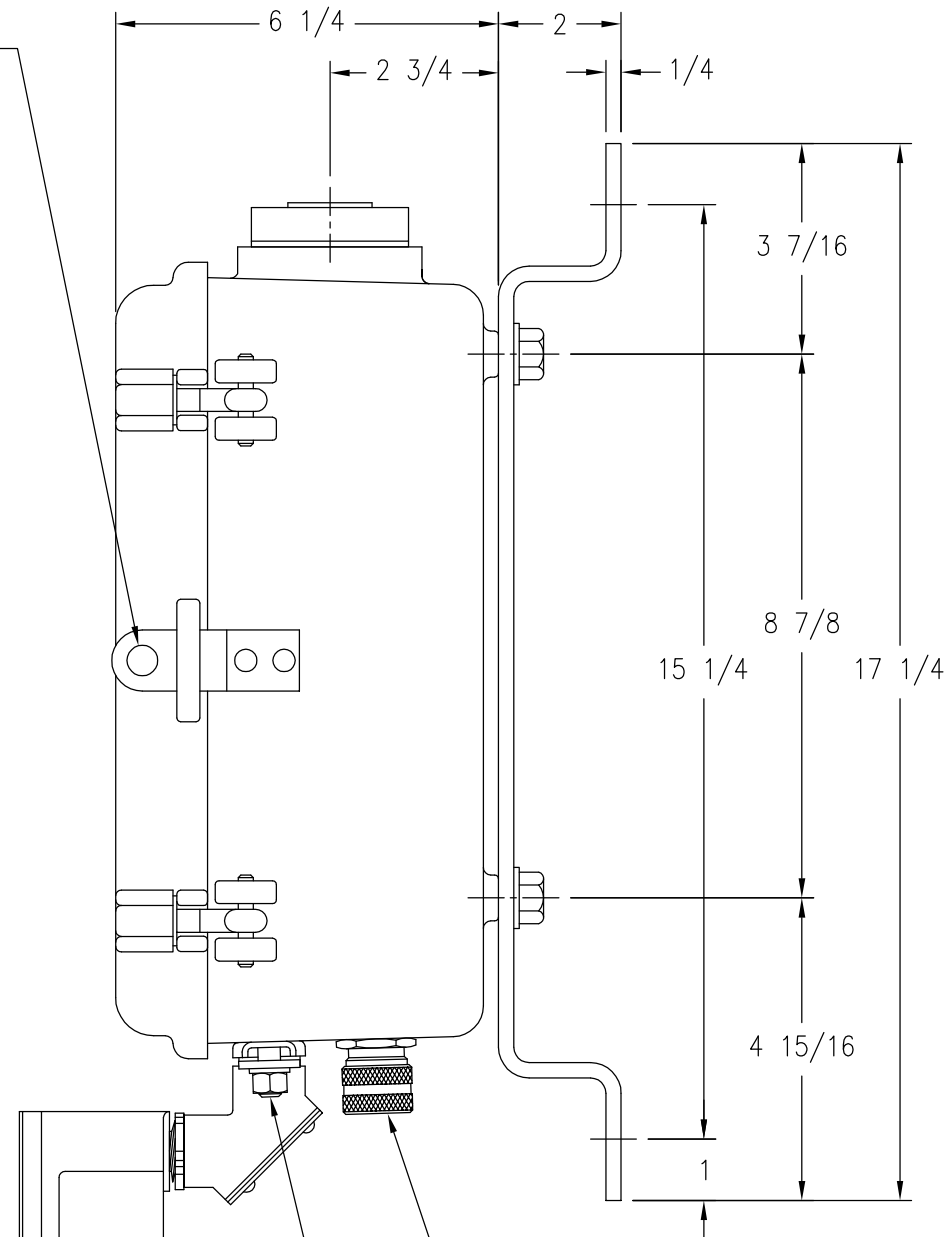
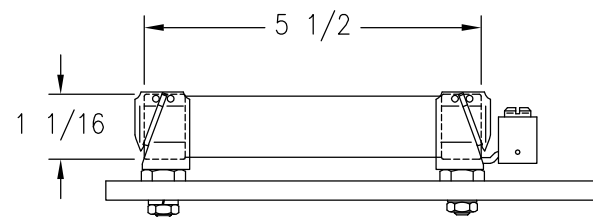


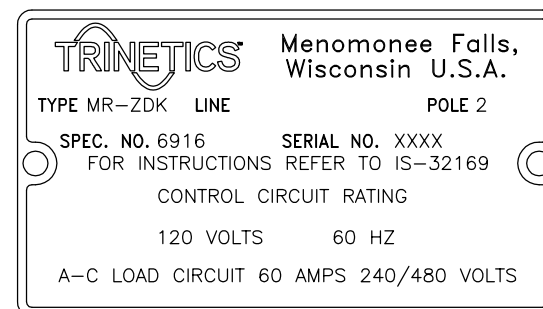
CONTROL TERMINALS WILL ACCEPT #6 THRU #14 AWG WIRE
LINE/LOAD TERMINALS WILL ACCEPT #4 THRU #1/0 AWG WIRE



CAST ALUMINUM WEATHERPROOF CASE WITH BRACKET

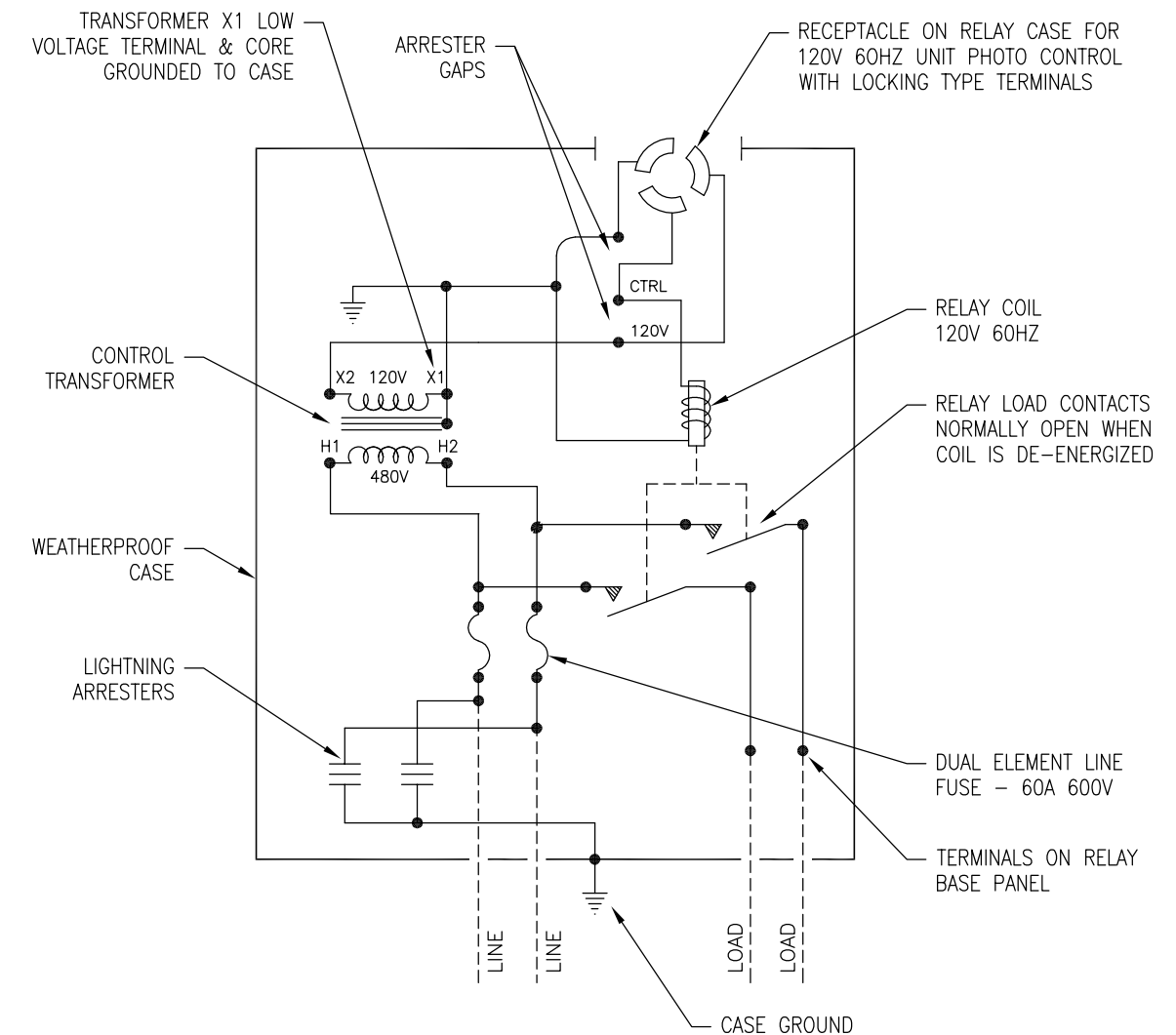


FUSE - DUAL ELEMENT, TIME DELAY, CLASS RK5 - 600V/60A



NAMEPLATE DETAIL

CONNECTIONS FOR TYPE MR-ZDK 2P RELAY
RATED 60A 480V 60HZ WITH PHOTO CONTROL UNIT



1. THE CASE MUST BE GROUNDED FOR THE LINE LIGHTNING ARRESTERS TO BE EFFECTIVE.
2. THE CONTROL CIRCUIT RATING IS SHOWN ON THE NAMEPLATE. THE CONTACTS OF THE PHOTO CONTROL USED WITH THIS RELAY MUST CLOSE TO ENERGIZE THE RELAY COIL. THE RECEPTACLE ON THE CASE IS ADJUSTABLE FOR NORTH ORIENTATION.
3. THE LOAD CIRCUIT RATING IS SHOWN ON THE NAMEPLATE. THIS RELAY IS RECOMMENDED FOR SWITCHING THE POWER TO LOADS WITH 45% OF THE FUSE RATING. THE DUAL ELEMENT FUSES SUPPLIED WITH THESE NOT EXCEED 80% MIN. POWER FACTOR. RELAY LOADING SHOULD RELAYS HAVE A 200,000 AMPERE SHORT CIRCUIT INTERRUPTING CAPACITY.

THIS DRAWING AND ALL INFORMATION THEREON IS THE SOLE PROPERTY OF TRINETICS. IT MUST NOT BE COPIED, REPRODUCED OR SUBMITTED TO OTHERS WITHOUT WRITTEN AUTHORIZATION. ALL REPRODUCTIONS ARE SUBJECT TO RETURN ON DEMAND.



RELAY ASSEMBLY
MR-ZDK SPEC 6916



THIRD ANGLE
PROJECTION

SIZE
B

DRAWN BY
M Matuszewski

DATE
11/18/11

PART NUMBER

ALL DIMENSIONS ARE IN INCHES
UNLESS OTHERWISE SPECIFIED

FAMILY ID
C1643

APPROX. WEIGHT
24 LB

SCALE
5/16

33216700