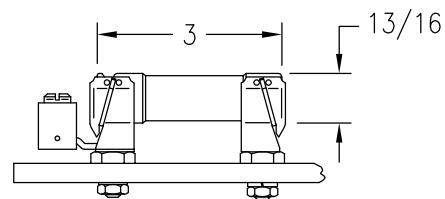
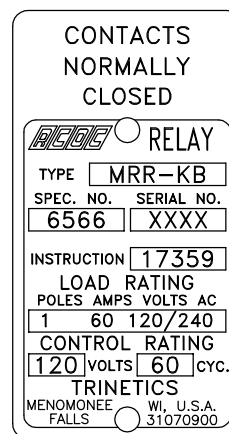


CONTROL TERMINALS WILL ACCEPT #6 THRU #14 AWG WIRE
 LINE/LOAD TERMINALS WILL ACCEPT #4 THRU #1/0 AWG WIRE

DIE-CAST ALUMINUM WEATHERPROOF CASE WITH BRACKET

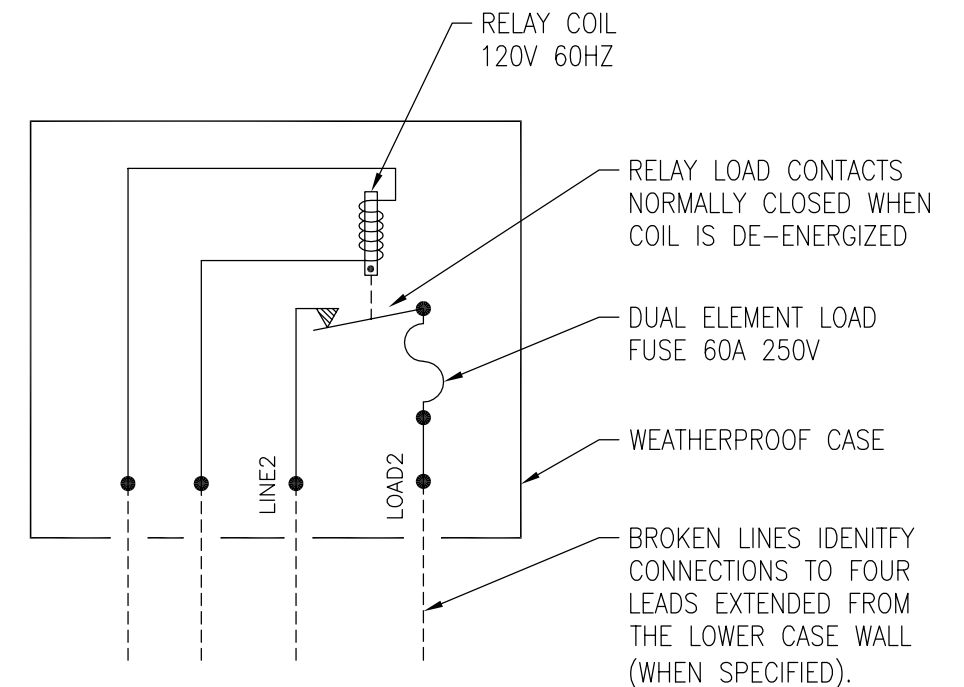


FUSE - DUAL ELEMENT, TIME DELAY, CLASS RK5 - 250V/60A



NAMEPLATE DETAIL

WIRING DIAGRAM



THE TYPE MRR-KB DESIGNATION IDENTIFIES THE 1 POLE RELAY RATED 60 AMPERES 240 VOLTS AC WITH THE LOAD CONTACTS NORMALLY CLOSED WHEN THE 120 VOLT 60 HERTZ COIL IS DE-ENERGIZED WITH LOAD CIRCUIT FUSE IN WEATHERPROOF CASE.

1. THE CONTROL CIRCUIT RATING IS SHOWN ON THE NAMEPLATE.
2. THE TYPE MRR RELAY LOAD CONTACTS ARE NORMALLY CLOSED WHEN THE OPERATING COIL IS DE-ENERGIZED. THE CONTROL CIRCUIT IS ENERGIZED TO OPEN THE TYPE MRR RELAY LOAD CONTACTS.
3. SINCE STREET LIGHTING LOADS ARE CONTINUOUSLY ENERGIZED FOR LONG PERIODS THE CONNECTED LOAD SHOULD NOT EXCEED 80% OF THE FUSE RATING. THE LOAD FOR INSTALLATIONS WHICH USE BALLASTS, TRANSFORMERS, OR REACTORS SHOULD BE BASED ON THE TOTAL AMPERE RATING OF THE UNIT AND NOT ON THE WATTAGE OF THE LAMPS.

THIS DRAWING AND ALL INFORMATION THEREON IS THE SOLE PROPERTY OF TRINETICS. IT MUST NOT BE COPIED, REPRODUCED OR SUBMITTED TO OTHERS WITHOUT WRITTEN AUTHORIZATION. ALL REPRODUCTIONS ARE SUBJECT TO RETURN ON DEMAND.

		RELAY ASSEMBLY MRR-KB SPEC 6566		DATE 11/28/11		PART NUMBER	
				DRAWN BY M Matuszewski		33021406	
THIRD ANGLE PROJECTION		SIZE B	APPROX. WEIGHT 9 LB		SCALE 5/16		
ALL DIMENSIONS ARE IN INCHES UNLESS OTHERWISE SPECIFIED		FAMILY ID C1643					