

1

2

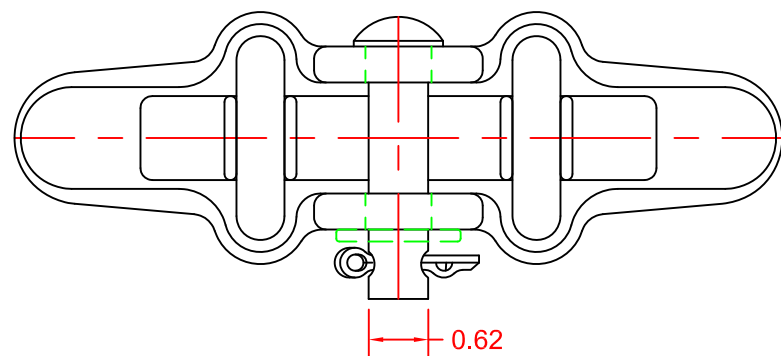
3

4

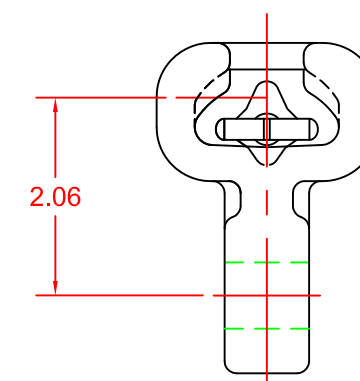
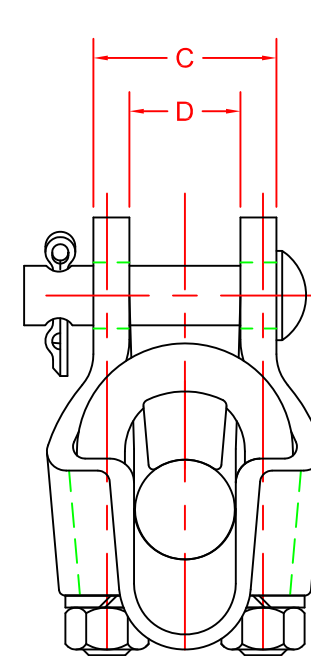
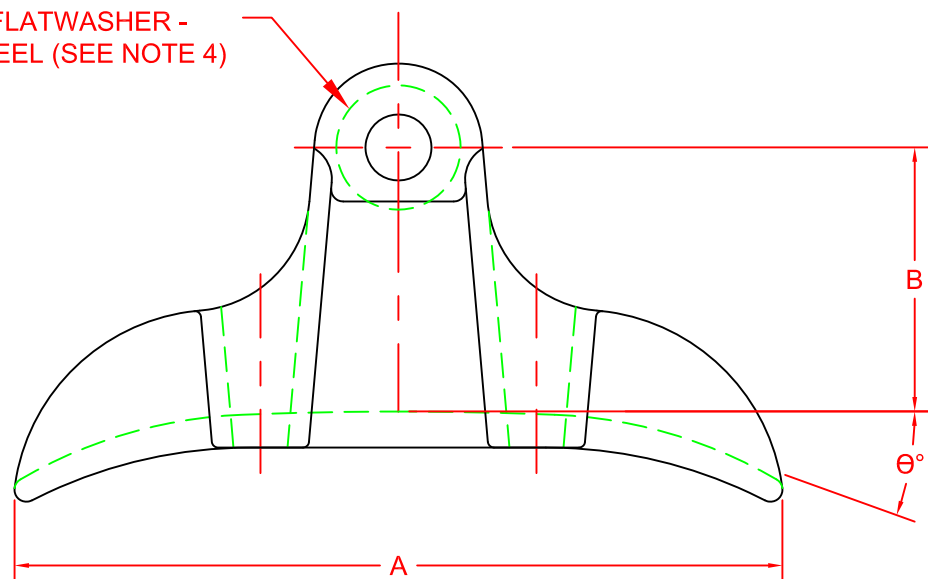
5

MS-60-N-BNK-DWP: BODY, BOLT, RIDER, AND U-BOLTS TO BE MAGNETIC PARTICLE INSPECTED AND MARKED WITH THE LETTER "M", ALSO PART TO BE MARKED WITH DWP PART NO. "K-24".

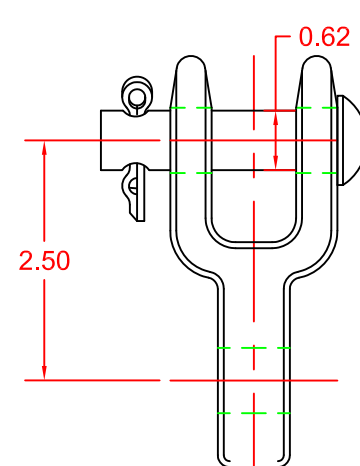
CATALOG NUMBER	CLAMPING RANGE (IN)		DIMENSIONS(IN)						ULTIMATE STRENGTH
	MIN.	MAX.	A	B	C	D	E	θ°	
MS-38-N	0.18	0.38	5.63	1.88	0.88	0.5	0.5	30	16,000
MS-46-N	0.2	0.46	5.63	2	0.88	0.5	0.5	30	16,000
MS-60-N	0.2	0.6	6.44	2	0.88	0.5	0.5	30	16,000
MS-60-N-BNK-DWP	0.2	0.6	6.44	2	0.88	0.5	0.5	30	16,000
MS-70-N	0.3	0.7	6.38	2	0.88	0.63	0.5	30	18,000
MS-82-N	0.4	0.82	7.5	2.38	0.94	0.75	0.5	30	18,000
MS-82-S-BR	0.4	0.82	7.5	2.38	1.25	1	0.5	15	18,000
MS-104-N	0.5	1.04	8	2.75	1.16	1	0.5	30	25,000



1/8" THICK FLATWASHER - GALV. STEEL (SEE NOTE 4)



SOCKET



CLEVIS

"E" DIAMETER

DIMENSION "D" INDICATES MAX. WIDTH OF FITTING TO BE USED IN CLEVIS OPENING.

NOTES:

- MATERIAL: BODY & RIDER - 654512 DUCTILE IRON (ASTM A535-65T)  
HARDWARE - GALVANIZED STEEL  
CLEVIS PIN - GALVANIZED STEEL (ASTM A307-65 GRADE B)  
COTTER PIN - STAINLESS STEEL - #302.
- MAY BE SUPPLIED WITH EITHER CLEVIS OR SOCKET. TO SPECIFY, ADD - "C" OR "S" SUFFIX TO CATALOG NUMBER. EXAMPLE: MS-46-C FOR CLEVIS.
- MAY BE SUPPLIED WITH HEX BOLT, NUT, AND COTTER PIN. TO SPECIFY ADD - "BNK" SUFFIX TO CATALOG NUMBER. EXAMPLE: MS-46-C-BNK.
- TO BE SUPPLIED WITH 1/8" THICK GALVANIZED STEEL FLATWASHER UNDER COTTER PIN AND 1" WIDE SOCKET ON MS-82-S-BR ONLY.
- GALVANIZE PER ASTM A153-82.
- PARTS WITH A - "CVN" SUFFIX ARE PROVIDED WITH A CHARPY LEVEL 1 RATED BOLT AND HARDWARE THAT IS GALVANIZED PER CSA G164.

70225	6/29/17	DBD	DBD
EC #	DATE	CHG BY	RESP ENG
DESC OF DWG: UPDATE TO AUTOCAD FORMAT ADDED NOTE 6.			
REASON (S) FOR CHANGE: -- NEW DRAWING			
DISPOSITION OF MAT'L: --			

CONFIDENTIAL: THIS DRAWING AND ITS CONTENTS ARE CONFIDENTIAL AND THE EXCLUSIVE PROPERTY OF HUBBELL POWER SYSTEMS. NO PUBLICATION, DISTRIBUTION, OR COPIES MAY BE MADE WITHOUT THE WRITTEN CONSENT OF HUBBELL POWER SYSTEMS. HUBBELL POWER SYSTEMS UNPUBLISHED ALL RIGHTS RESERVED UNDER THE COPYRIGHT LAWS.

**HUBBELL POWER SYSTEMS**

TITLE: **SUSPENSION CLAMP**

SIZE	DWG NO.	CAT / PART / ASSY NO.	REV
B	CC-4939	MS-TYPE	25

SCALE: NS    DRN BY: VT    DATE: 9/6/62    SHEET: 1 OF 1

1

2

3

4

5