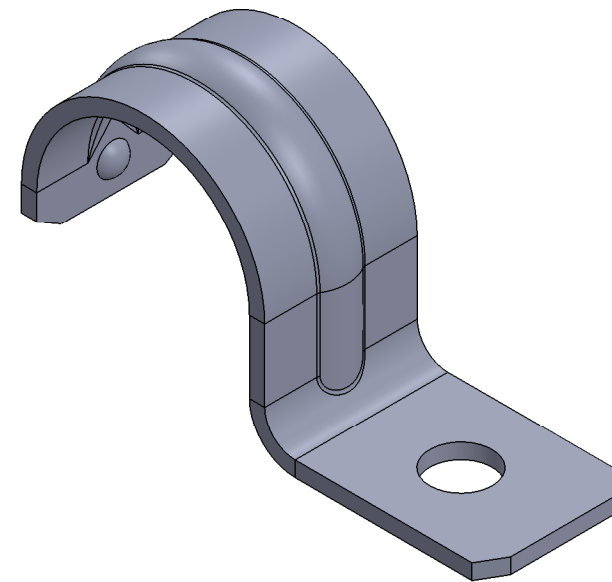
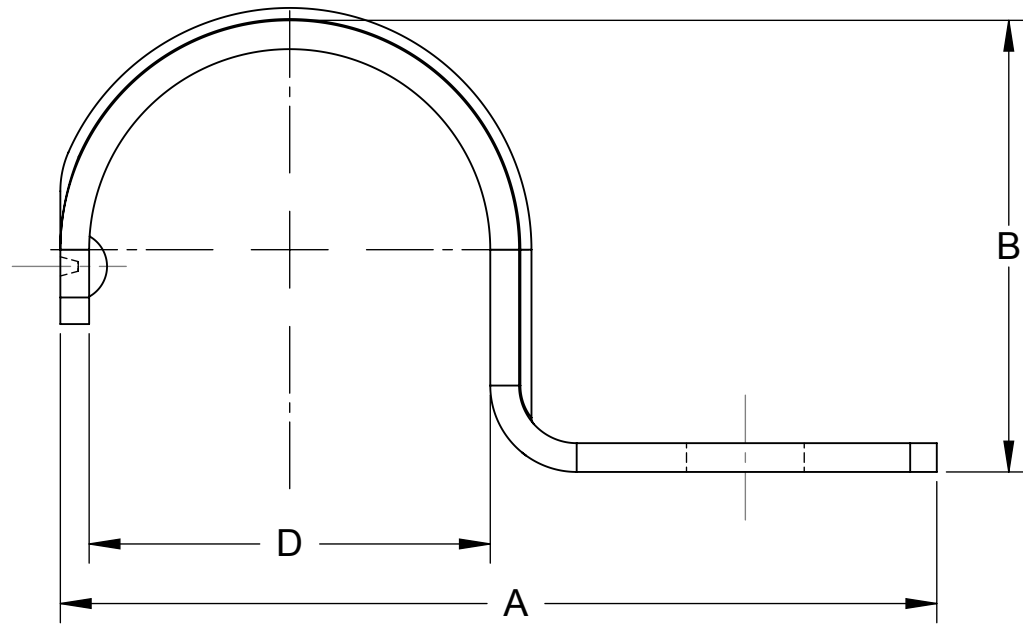
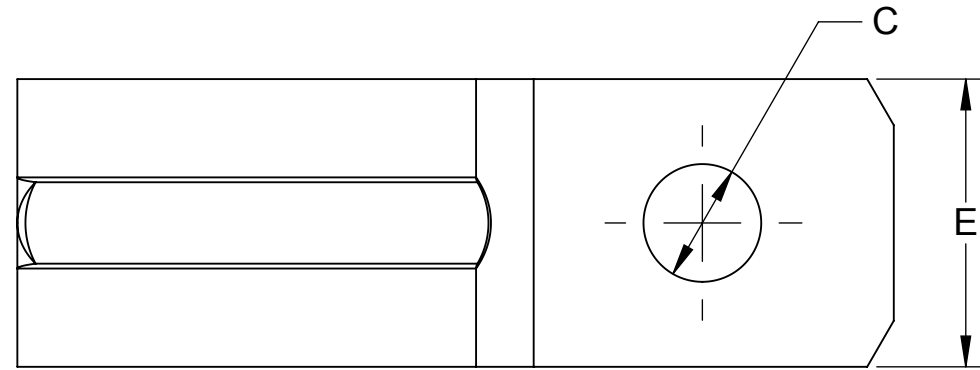


CAT NO.	TRADE SIZE	A	B	C	D	E
1332	1/2"	1.85 [47.0]	0.96 [24.4]	0.26 [6.6]	0.86 [21.8]	0.56 [14.2]
1333	3/4"	2.28 [58.0]	1.18 [30.0]	0.31 [7.9]	1.04 [26.4]	0.75 [19.1]
1334	1"	2.73 [69.3]	1.38 [35.1]	0.31 [7.9]	1.33 [33.8]	0.85 [21.6]
1335	1 1/4"	3.17 [80.5]	1.78 [45.2]	.39 [9.8]	1.68 [42.7]	.86 [21.8]
1336	1 1/2"	3.48 [88.4]	2.21 [56.1]	0.39 [9.8]	1.92 [48.8]	0.98 [24.8]
1337	2"	4.92 [125.0]	3.09 [78.4]	.53 [13.5]	2.90 [73.5]	1.19 [30.2]
1338	2 1/2"	4.10 [104.0]	2.26 [57.4]	.41 [10.3]	2.41 [61.2]	1.06 [27.0]
1339	3"	5.49 [139.5]	3.65 [92.6]	0.55 [14.0]	3.46 [87.8]	1.19 [30.2]
1340	3-1/2"	6.26 [159.0]	4.10 [104.1]	.57 [14.5]	4.00 [101.5]	1.18 [30.0]
1341	4"	7.024 [178.4]	4.55 [115.7]	0.55 [14.0]	4.43 [112.5]	1.19 [30.2]



- NOTES:  
1. ALL DIMENSIONS ARE IN INCHES AND [MILLIMETERS].  
2. 1337, 1339 -1341 ARE cULus LISTED.

**LIST OF PARTS**

DESCRIPTION	MATERIAL	FINISH
RIGID ONE HOLE STRAPS	STEEL	GALVANIZED

SYMBOL	REVISION DESCRIPTION	APP	DATE
	INITIAL RELEASE	F.P	07/10/15

THE DESIGN AND DIMENSIONS OF THE PRODUCT SHOWN ON THIS DRAWING ARE SUBJECT TO CHANGE WITHOUT NOTICE

TITLE:  
**RIGID ONE HOLE STRAPS**

TOLERANCE UNLESS OTHERWISE SPECIFIED  .XX DECIMAL ±.015 .XXX DECIMAL ±.005 ANGLE ±2°	<b>RACO</b> South Bend, Indiana		SCALE: <b>1:1</b>
	DRAWN BY:	F.PAUL	
	APP. BY:	X.X.	
	DATE:	07/07/2015	

FILE NO. :  
ONE HOLE STRAPS RIGID CUS

DIMENSION SHEET FOR CAT. NO.  
**SEE CHART**

SIZE:  
**B**