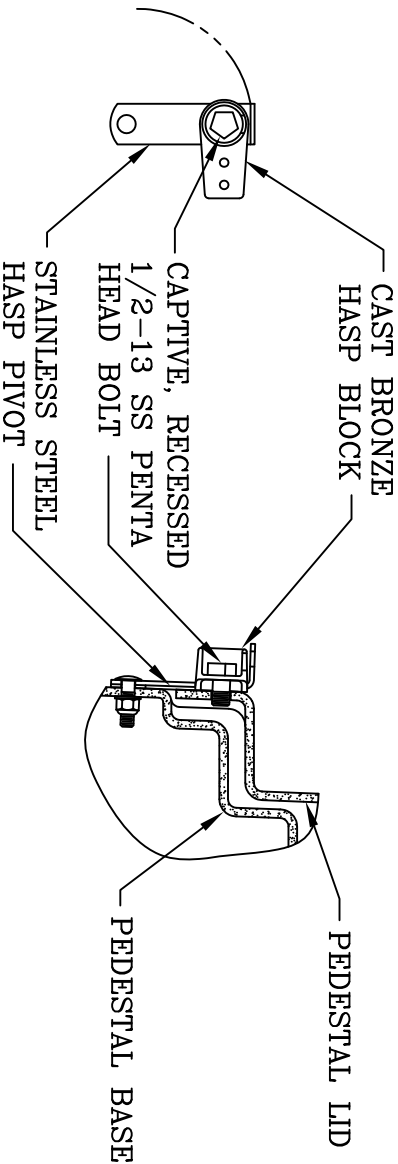
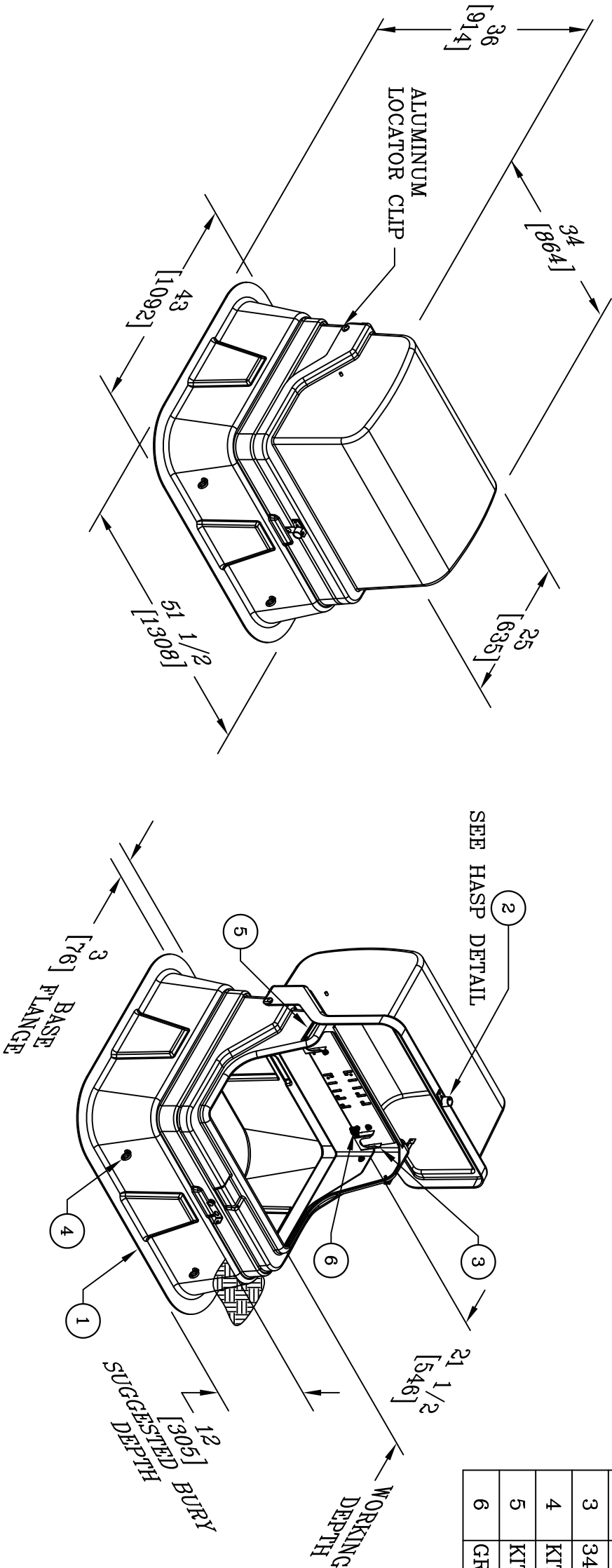



ITEM#	DESCRIPTION	QTY.
1	34X25X36 PRIMARY PEDESTAL	1
2	KIT, HASP ASS'Y DF3 PEDESTAL	1
3	34" JMB ASS'Y – INLINE STANDS	1
4	KIT, LIFTING EYE ASSEMBLY	4
5	KIT, COVER WIND LOCK	2
6	GROUNDING LUG	1



DF3 HASP DETAIL

NOTES:

1. MOUNTING BAR WILL WITHSTAND A MINIMUM 400 LB. [181kg] LOADING TO INSTALL OR REMOVE ELBOWS.
2. JUNCTION MOUNTING MATERIAL IS ALUMINUM AND ALL MOUNTING HARDWARE IS STAINLESS STEEL.
3. MATERIAL & WORKMANSHIP PER WESTERN POWER PRODUCTS SPECIFICATION DATED JANUARY, 1990.
4. MATERIAL THICKNESS IS 1/4 [6].
5. A SMOOTH 12 [305] X 12 [305] SURFACE ON THE INSIDE OF THE COVER WILL BE PROVIDED FOR THE PLACEMENT LABELS.

DIMENSIONS ARE IN INCHES OR MILLIMETERS IN BRACKETS UNLESS OTHERWISE NOTED.						
	BY	DATE	WEIGHT	 ® 3621 INDUSTRIAL PARK DR LENOIR CITY, TN 37771 800-346-3062 www.quazite.com	LOC	
DRN	RLJ	1/18/12	103# 47kg		LC	
CHK	ggg	2/13/12	SCALE		S	
ENG	DU	2/13/12	NTS		REV	
APR	MEY	2/13/12	SIZE		B	
APR			B			5/12
PROJECT NUMBER			DRAWING NUMBER			
105336			P1342536MDL			
SHEET 1 OF 1						