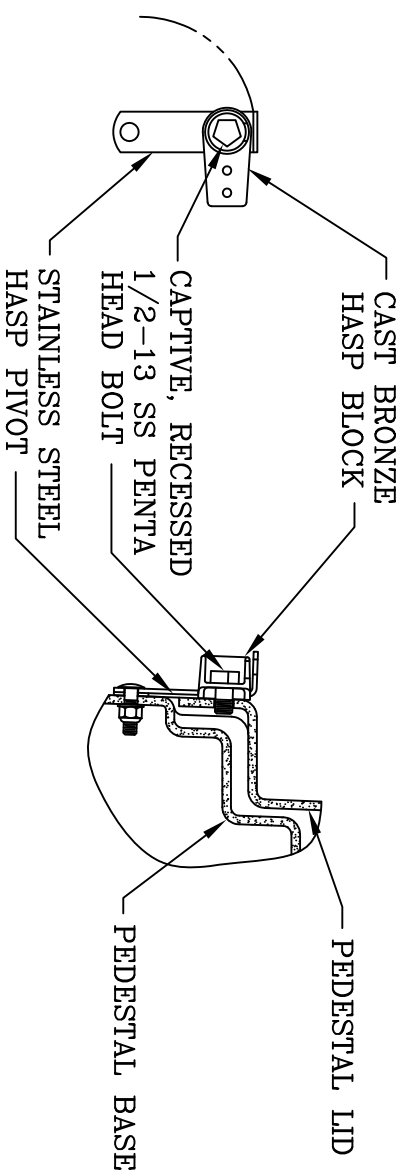


ITEM#	DESCRIPTION	QTY.
1	34X25X48 PRIMARY PEDESTAL	1
2	KIT, HASP ASS'Y DF3 PEDESTAL	1
3	34" JMB ASS'Y - INLINE STANDS	1
4	KIT, LIFTING EYE ASSEMBLY	4
5	KIT, COVER WIND LOCK	2
6	GROUNDING LUG	1



DF3 HASP DETAIL

**NOTES:**

1. MOUNTING BAR WILL WITHSTAND A MINIMUM 400 LB. [181kg] LOADING TO INSTALL OR REMOVE ELBOWS.
2. JUNCTION MOUNTING MATERIAL IS ALUMINUM AND ALL MOUNTING HARDWARE IS STAINLESS STEEL.
3. MATERIAL & WORKMANSHIP PER WESTERN POWER PRODUCTS SPECIFICATION DATED JANUARY, 1990.
4. MATERIAL THICKNESS IS 1/4 [6].
5. A SMOOTH 12 [305] X 12 [305] SURFACE ON THE INSIDE OF THE COVER WILL BE PROVIDED FOR THE PLACEMENT LABELS.

DIMENSIONS ARE IN INCHES OR MILLIMETERS IN BRACKETS UNLESS OTHERWISE NOTED.

BY	DATE	WEIGHT		3621 INDUSTRIAL PARK DR LENOIR CITY, TN 37771 800-346-3062 www.quazite.com	LOC
DRN	1/18/12	135# 61kg			LC
CHK	2/13/12	SCALE	DRAWING DESCRIPTION HUBBELL® PRIMARY PEDESTAL 34X25X48 MUNSELL GREEN	REV B	
ENG	2/13/12	MNTS			
APR	2/13/12	SIZE	B	5/12	
APR	2/13/12				
PROJECT NUMBER		105336		SHEET 1 OF 1	
DRAWING NUMBER		P1342548MDL			