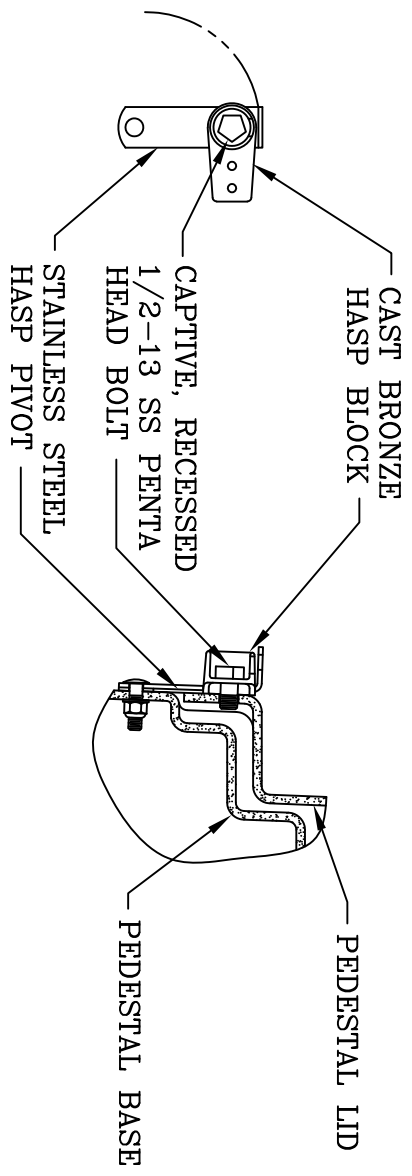
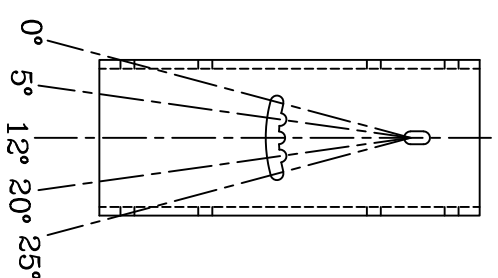


ITEM#	DESCRIPTION	QTY.
1	58X25X48 PRIMARY PEDESTAL	1
2	KIT, HASP ASS'Y DF3 PEDESTAL	1
3	58" JMB ASS'Y - BELOW SLIDING STANDS	1
4	KIT, LIFTING EYE ASSEMBLY	4
5	KIT, COVER WIND LOCK	2
6	GROUNDING LUG	1

ADJUSTABLE JUNCTION PLATE
WORKING ANGLES



NOTES:

1. MOUNTING BAR WILL WITHSTAND A MINIMUM 400 LB. [181kg] LOADING TO INSTALL OR REMOVE ELBOWS.
2. JUNCTION MOUNTING MATERIAL IS ALUMINUM AND ALL MOUNTING HARDWARE IS STAINLESS STEEL.
3. MATERIAL & WORKMANSHIP PER WESTERN POWER PRODUCTS SPECIFICATION DATED JANUARY, 1990.
4. MATERIAL THICKNESS IS 1/4 [6].
5. A SMOOTH 12 [305] X 12 [305] SURFACE ON THE INSIDE OF THE COVER WILL BE PROVIDED FOR THE PLACEMENT LABELS.

DIMENSIONS ARE IN INCHES OR MILLIMETERS IN BRACKETS UNLESS OTHERWISE NOTED.

BY	DATE	WEIGHT		3621 INDUSTRIAL PARK DR LENOIR CITY, TN 37771 800-346-3062 www.quazite.com	LOC
DRN	1/19/12	205# 93kg			LC
CHK	2/13/12	SCALE	DRAWING DESCRIPTION HUBBELL® PRIMARY PEDESTAL 58X25X48 MUNSELL GREEN SLIDING PARKING STANDS - BELOW	REV B	5/12
ENG	2/13/12	NTS			
APR	2/13/12	SIZE			
ESR OR PROJECT NUMBER		105336		SHEET 1 OF 1	
DRAWING NUMBER		P3582548MDB			