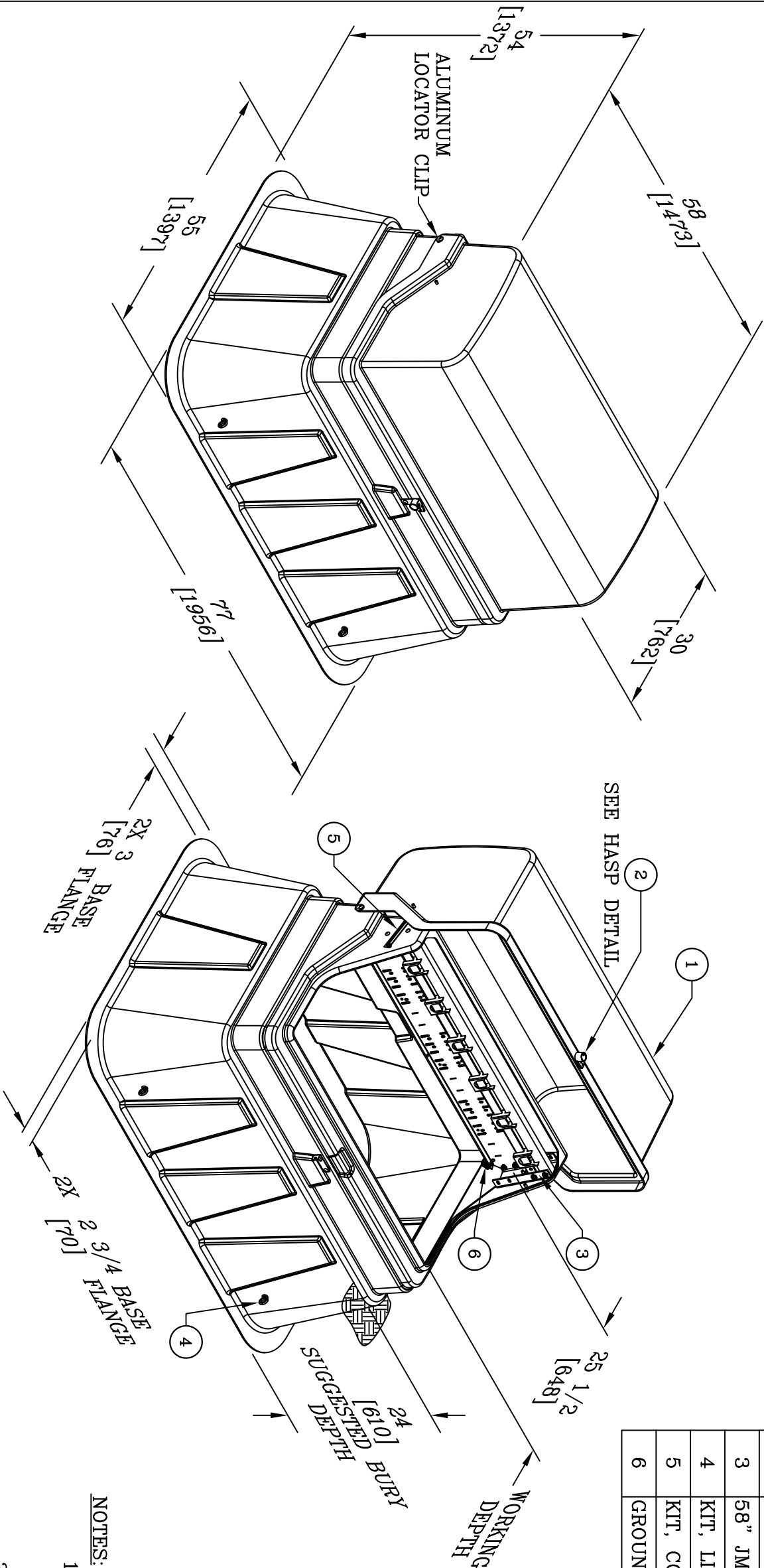
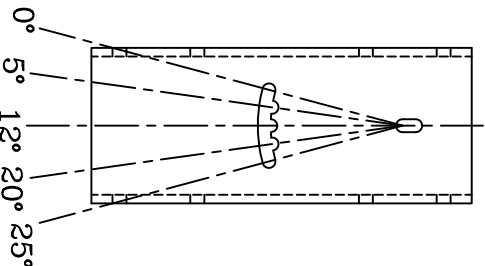


ITEM#	DESCRIPTION	QTY.
1	58X30X54 PRIMARY PEDESTAL	1
2	KIT, HASP ASS'Y DF3 PEDESTAL	1
3	58" JMB ASS'Y – SLIDING STANDS – ABOVE	1
4	KIT, LIFTING EYE ASSEMBLY	4
5	KIT, COVER WIND LOCK	2
6	GROUNDING LUG	1



ADJUSTABLE JUNCTION PLATE
WORKING ANGLES



NOTES:

1. MOUNTING BAR WILL WITHSTAND A MINIMUM 400 LB. [181kg] LOADING TO INSTALL OR REMOVE ELBOWS.
2. JUNCTION MOUNTING MATERIAL IS ALUMINUM AND ALL MOUNTING HARDWARE IS STAINLESS STEEL.
3. MATERIAL & WORKMANSHIP PER WESTERN POWER PRODUCTS SPECIFICATION DATED JANUARY, 1990.
4. MATERIAL THICKNESS IS 1/4 [6].
5. A SMOOTH 12 [305] X 12 [305] SURFACE ON THE INSIDE OF THE COVER WILL BE PROVIDED FOR THE PLACEMENT LABELS.

DIMENSIONS ARE IN INCHES OR MILLIMETERS IN BRACKETS UNLESS OTHERWISE NOTED.

	BY	DATE	WEIGHT		LOC
	RLJ	1/20/12	239# 108kg		LC
DRN	RLJ	1/20/12	SCALE		S
CHK	RLJ	2/13/12	NTS		
ENG	RLJ	2/13/12	SIZE		
APR	RLJ	2/13/12	B		
APR					
PROJECT NUMBER			DRAWING NUMBER		
105336			P3583054MDA		

- CAST BRONZE
HASP BLOCK
- CAPTIVE, RECESSED
1/2-13 SS PENTA
HEAD BOLT
- STAINLESS STEEL
HASP PIVOT
- PEDESTAL LID
- PEDESTAL BASE

DF3 HASP DETAIL