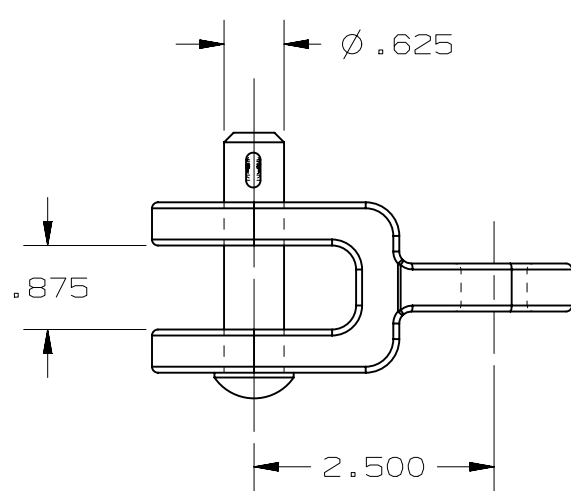


4

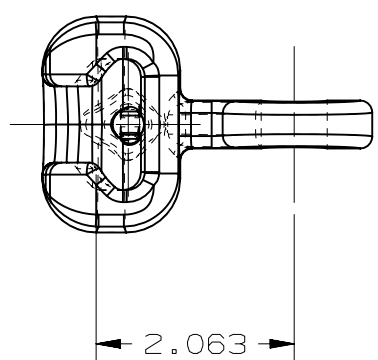
3

2

1



CLEVIS FITTING



SOCKET FITTING

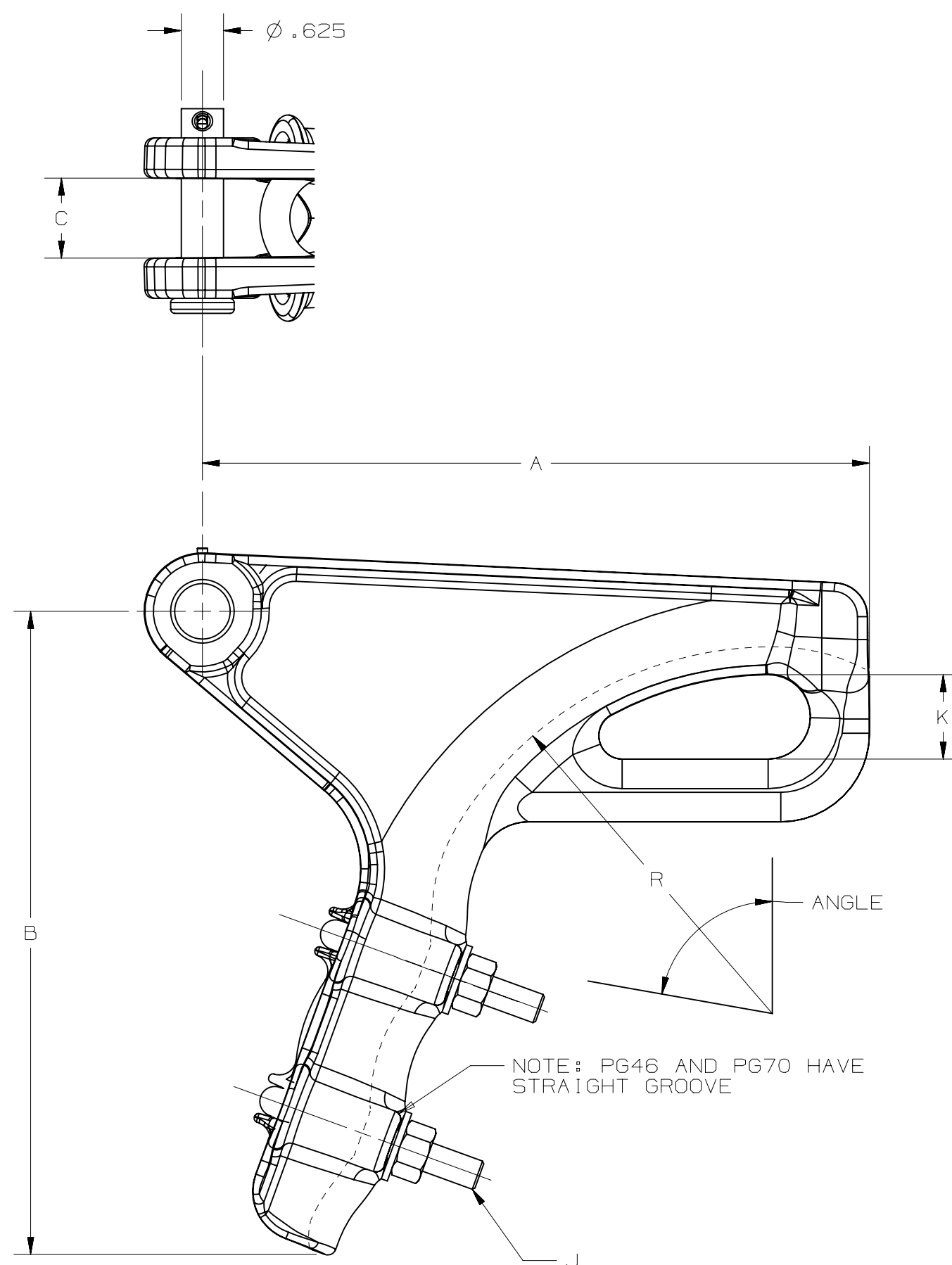


FIG. 1

NOTES:

1. MATERIAL: BODY & KEEPER - ALUMINUM ALLOY.
U-BOLTS, NUTS & WASHER - GALV. STEEL.
CLEVIS PIN & CLEVIS BOLT - GALV. STEEL.
COTTER PIN - STAINLESS STEEL.
CLEVIS OR SOCKET FITTING - DUCTILE IRON, HOT DIP GALV.
2. END-FITTINGS MAY BE ORDERED BY SPECIFYING "C" (CLEVIS) OR "S" (SOCKET) IN CAT. NO., EX. "PG46S" FOR PG46 WITH SOCKET. THE SUFFIX "N" INDICATES THAT NO END FITTING IS SUPPLIED.
3. "BNK" SUFFIX CONSISTS OF A JAM NUT & CLEVIS BOLT INSTEAD OF CLEVIS PIN. EX. "PG57SBNK".
4. ALL DIMENSIONS ARE FOR REFERENCE ONLY.

CATALOG NUMBER	CABLE DIA.		BODY FIG.	DIMENSIONS IN INCHES						ANGLE	NO. U-BOLTS	ULT. BODY STR. LBS.
	MIN.	MAX.		A	B	C	J	K	R			
PG46	.18	.52	1	4.063	4.750	.688	.375	1.000	1.250	90°	2	8000
PG57	.25	.57	1	5.500	5.313	.750	.500	1.000	1.625	90°	2	10000
PG70	.46	.73	1	6.438	7.000	.781	.500	1.125	3.250	85°	2	15000
PG86L	.52	.88	1	6.625	7.438	1.063	.500	1.000	4.500	70°	2	15000
PG100L	.50	1.00	1	9.875	9.313	1.188	.500	1.250	5.000	60°	2	18000

EC #	REV	DESCRIPTION	DATE	CHG BY	APPR'd
51360	20	REDRAWN IN UG. ADDED NOTE 3.	07/01/13	SD	SD
REVISION HISTORY					

HPS[®]

THIRD ANGLE PROJECTION

HUBBELL[®] POWER SYSTEMS

TITLE

PISTOL GRIP-DEAD END STRAIN CLAMP

SIZE DWG NO. **C-4196** CAT / PART / ASSY NO. **SEE TABLE** REV **20**

SCALE: NTS DRN BY: CO DATE: 7-21-55 SHEET 1 OF 1

CONFIDENTIAL: THIS DRAWING AND ITS CONTENTS ARE CONFIDENTIAL AND THE EXCLUSIVE PROPERTY OF HUBBELL POWER SYSTEMS. NO PUBLICATION, DISTRIBUTION OR COPIES MAY BE MADE WITHOUT THE WRITTEN CONSENT OF HUBBELL POWER SYSTEMS. HUBBELL POWER SYSTEMS UNPUBLISHED ALL RIGHTS RESERVED UNDER THE COPYRIGHT LAWS.

4

3

2

1