



PCORE
ELECTRIC

KV CLASS 138 kV	BIL 650 kV	Uy 102 kV
CURRENT RATING		
800 AMP DRAW LEAD CONNECTION 1200 AMP BOTTOM CONN. TRANSFORMER 1600 AMP BOTTOM CONN. OIL CIRCUIT BREAKER		
MIN. CREEP 126.00 [3200.4]	MIN. STRIKE 54.00 [1371.6]	
CREEP/uy 1.23 [31.2]	STD. IEEE C57.19.00/01	
PCB CONTENT OF OIL IS LESS THAN 1 ppm		

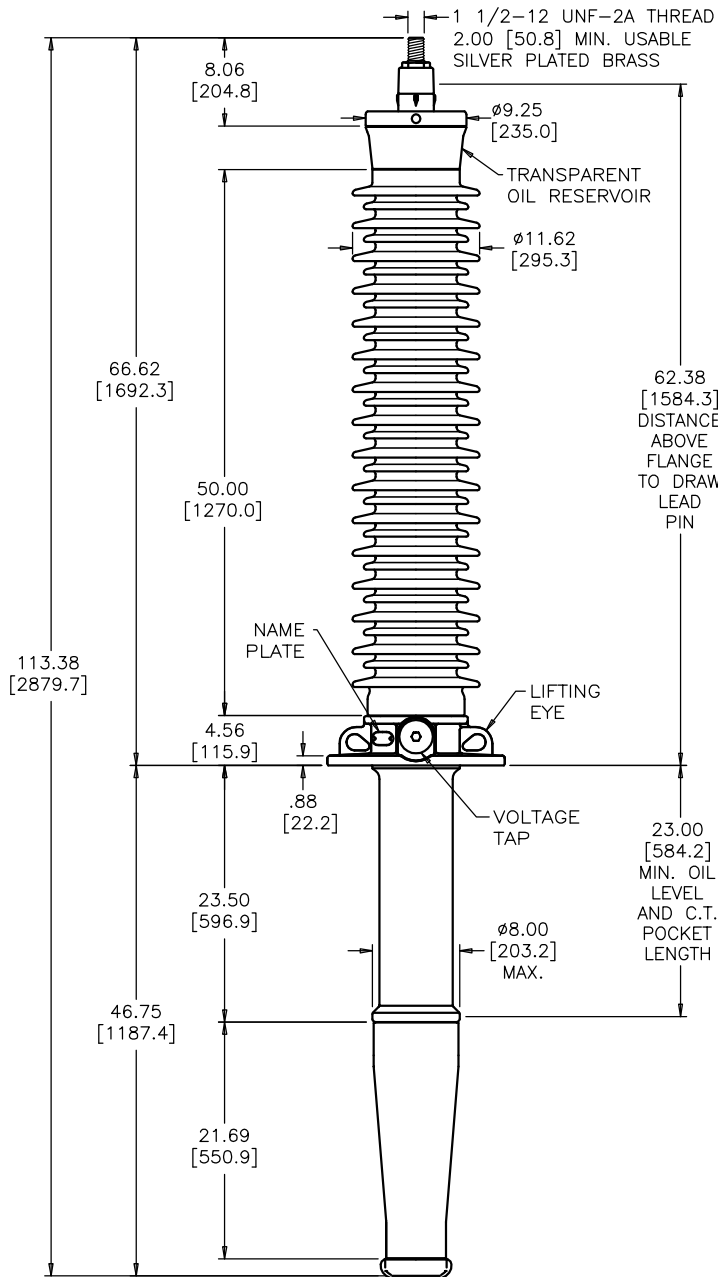
DWG.	CATALOG NUMBER	GLAZE COLOR
SD	POC650B0800S	BROWN
SD	POC650G0800S	LT. GRAY

DATE 12-10-96	REV. DATE 9-18-08
MAXIMUM ALTITUDE 10000 ft [3000 m]	
NET WEIGHT 375 lb [170 kg]	
ANGLE OF INCLINATION FROM THE VERTICAL 0° TO 60°	

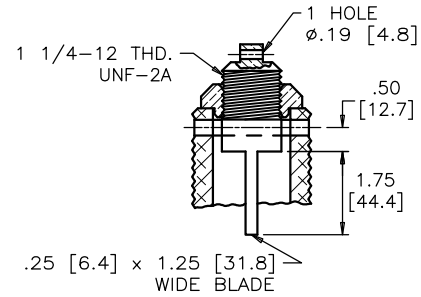
TITLE

TRANSFORMER - BREAKER
INTERCHANGEABLE

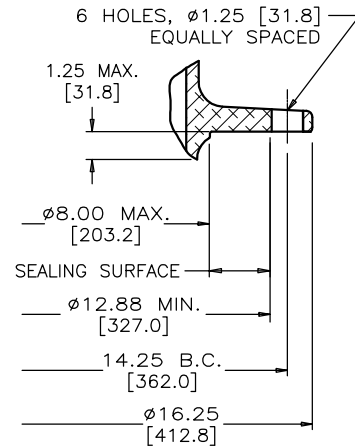
SILVER PLATED BRASS TOP TERMINAL



NOTE: ACTUAL DRAW-LEAD CURRENT RATING IS DETERMINED BY CABLE SIZE

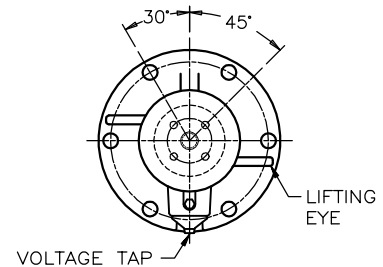


DRAW LEAD ASSEMBLY

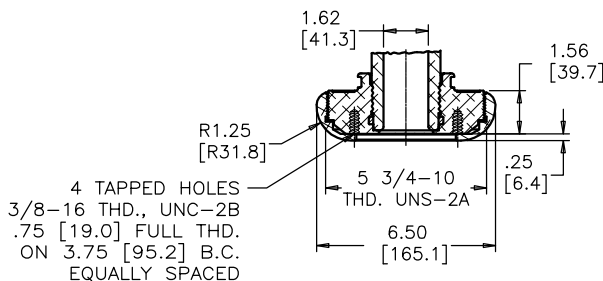


MOUNTING FLANGE

ANGLE BETWEEN HOLES IN BOTTOM TERMINAL & IN FLANGE COINCIDE WITHIN ±2°



ALIGNMENT OF FLANGE AND BOTTOM TERMINAL TOP VIEW



TWO PIECE BOTTOM END CAP WITH UNCOATED TRANSFORMER SHIELD

DIMENSIONS IN INCHES [MILLIMETERS]

REVISION REMOVED °C, TEMPERATURE GOVERNED BY IEEE STANDARDS

SCALE 1/12

NOTE TO PURCHASER: ALL SALES OF PCORE PRODUCTS ARE SUBJECT TO OUR STANDARD TERMS AND CONDITIONS AND THE LIMITED WARRANTIES THEREUNDER