
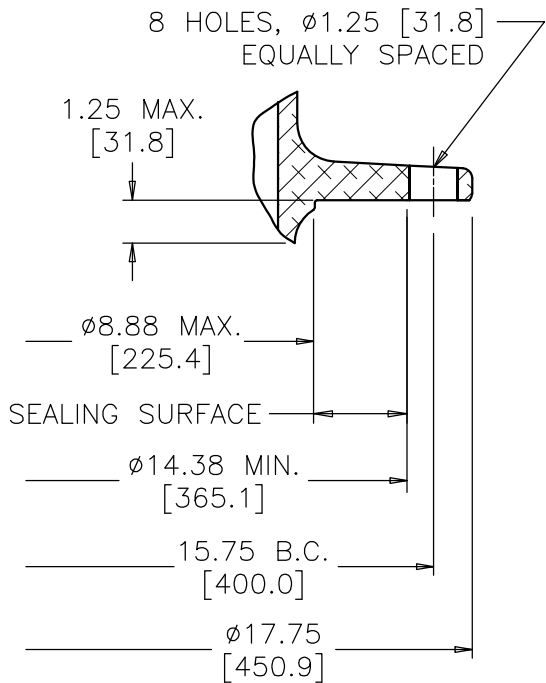
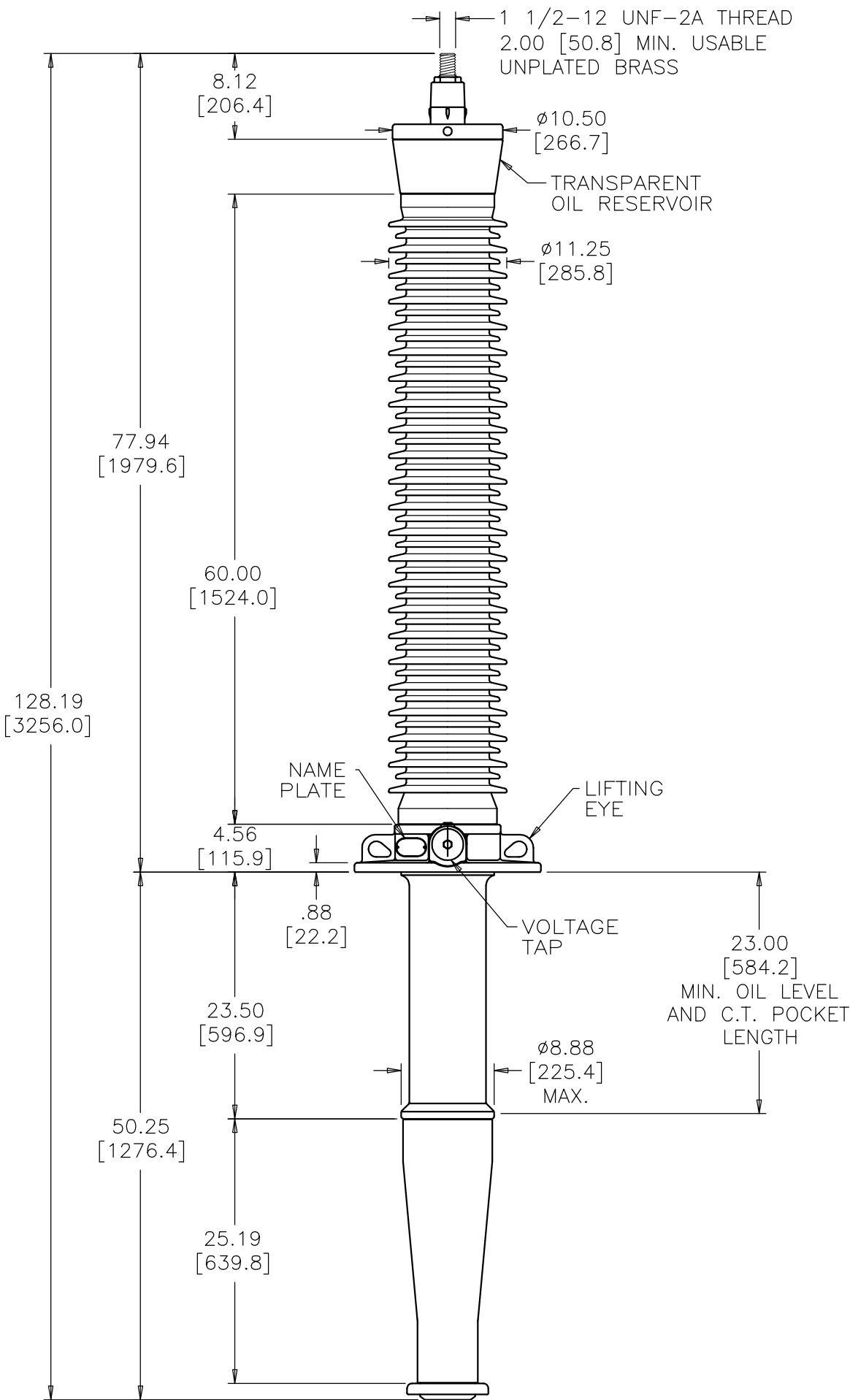
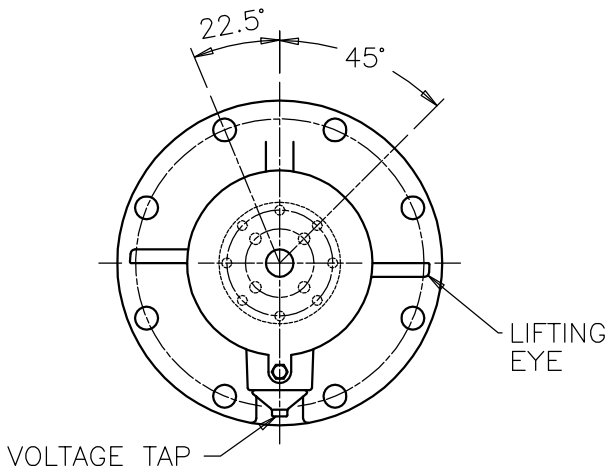


WWW.PCOREELECTRIC.COM			KV CLASS 161 kV		BIL 750 kV		Uy 146 kV		DWG.	CATALOG NUMBER	GLAZE COLOR	
PCORE ELECTRIC			CURRENT RATING							SD	POC750B1216R	BROWN
			1200A BOTTOM CONNECTION IN 55°C RISE OIL 1600A BOTTOM CONNECTION IN 40°C RISE OIL							SD	POC750G1216R	LT. GRAY
DATE 5-16-97			REV. DATE 9-12-06		MIN. CREEP 161.00 [4089.4]		MIN. STRIKE 65.00 [1651.0]		TITLE IEEE STANDARD BUSHING TRANSFORMER — BREAKER INTERCHANGEABLE CIRCUIT BREAKER RING			
MAXIMUM ALTITUDE 10000 ft [3000 m]		NET WEIGHT 500 lb [227 kg]		CREEP/Uy 1.10 [28.0]		STD. IEEE C57.19.00						
ANGLE OF INCLINATION FROM THE VERTICAL 0° TO 60°		PCB CONTENT OF OIL IS LESS THAN 1 ppm										

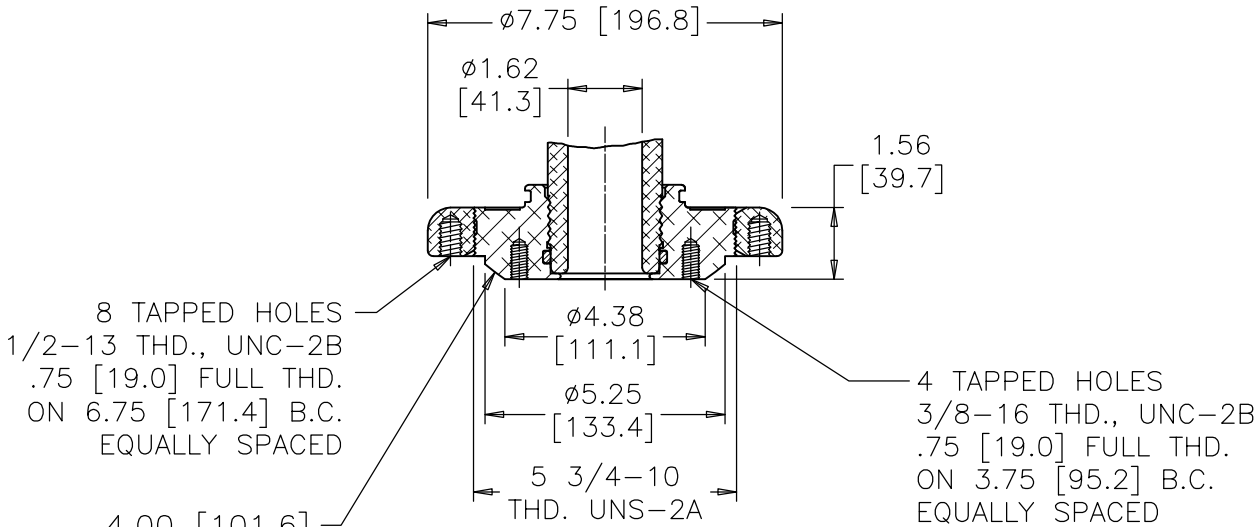


MOUNTING FLANGE

ANGLE BETWEEN HOLES IN BOTTOM TERMINAL & IN FLANGE COINCIDE WITHIN ±2°



ALIGNMENT OF FLANGE AND BOTTOM TERMINAL TOP VIEW



TWO PIECE BOTTOM END CAP WITH CIRCUIT BREAKER RING

DIMENSIONS IN INCHES [MILLIMETERS]

REVISION REDRAWN TO NEW STANDARDS, PCORE WAS LAPP, CORRECTED 240 TO 639.8 MM, ø11.25 WAS ø12.19, MIN CREEP WAS 151.00, MIN STRIKE WAS 65.50

SCALE 1/14

NOTE TO PURCHASER:
ALL SALES OF PCORE PRODUCTS ARE SUBJECT TO OUR STANDARD TERMS AND CONDITIONS AND THE LIMITED WARRANTIES THEREUNDER