



PCORE
ELECTRIC

kV CLASS 138 kV BIL 650 kV Uy 102 kV

CURRENT RATING

800 AMP DRAW-LEAD CONNECTION
1200 AMP BOTTOM CONN. TRANSFORMER
1600 AMP BOTTOM CONN. OIL CIRCUIT BREAKER

DWG. CATALOG NUMBER INS. COLOR

SD PRC650P0800S LT. GRAY

TITLE

OIL-FREE PRC BUSHING
W/COMPOSITE INSULATOR

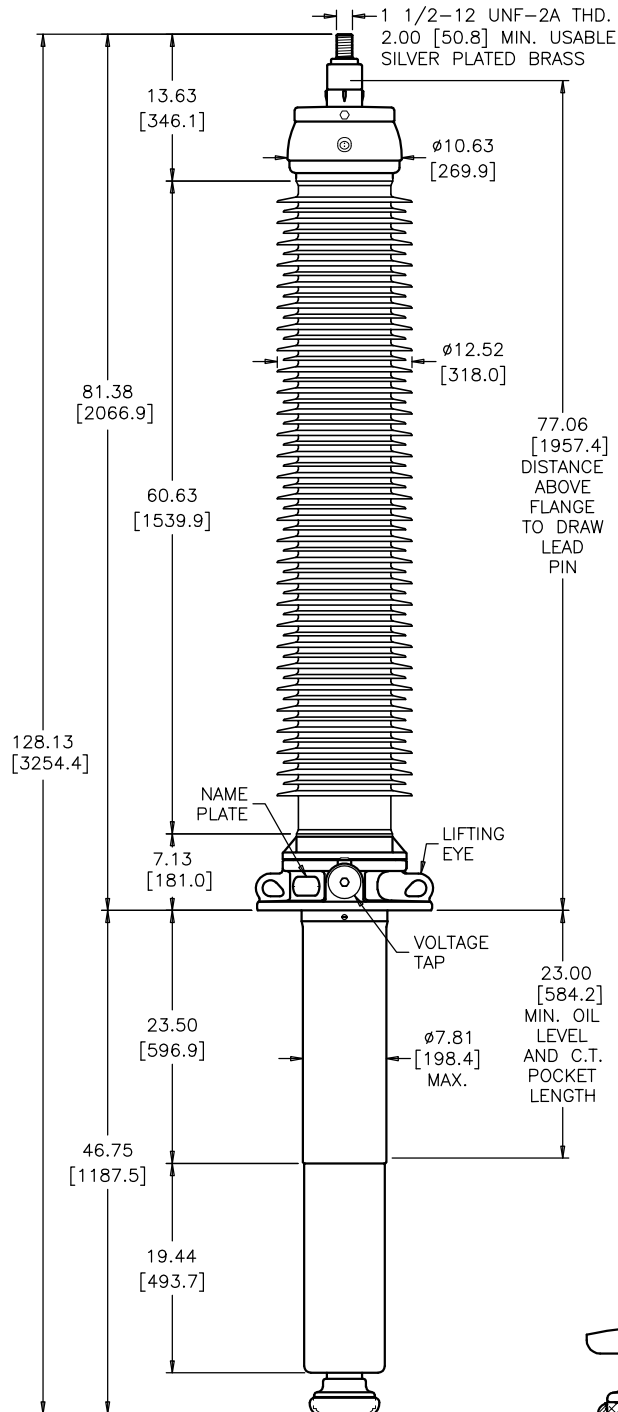
SILVER PLATED BRASS TOP TERMINAL

DATE	5-11-21	REV. DATE	7-15-21
MAXIMUM ALTITUDE	10000 ft [3000 m]		
NET WEIGHT	390 lb [177 kg]		

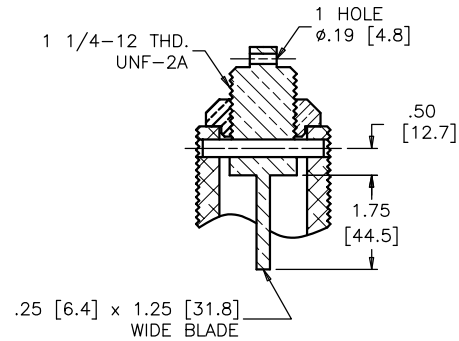
MIN. CREEP 215.00 [5461.0] MIN. STRIKE 61.00 [1549.4]

CREEP/L-G 2.70 [68.5] STD. IEEE C57.19.00/01

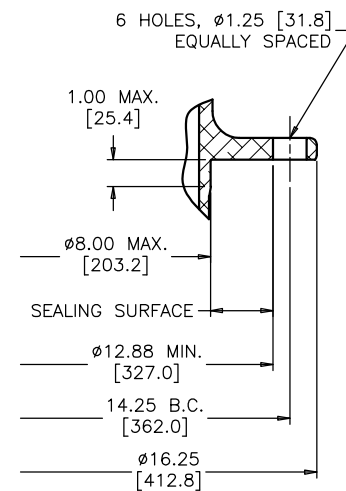
ANGLE OF INCLINATION FROM THE VERTICAL 0° TO 90°



NOTE: ACTUAL DRAW-LEAD CURRENT
RATING IS DETERMINED BY CABLE SIZE

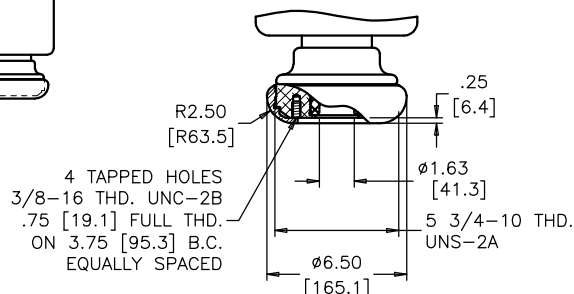


DRAW LEAD ASSEMBLY

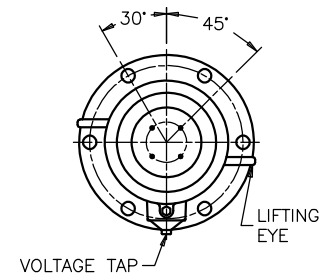


MOUNTING FLANGE

ANGLE BETWEEN HOLES
IN BOTTOM TERMINAL & IN
FLANGE COINCIDE WITHIN ±2°



**TWO PIECE BOTTOM END CAP
WITH UNCOATED TRANSFORMER SHIELD**



**ALIGNMENT OF FLANGE
AND BOTTOM TERMINAL
TOP VIEW**

DIMENSIONS IN INCHES [MILLIMETERS]

REVISION ADDED PLUG TO TOP CAN

SCALE 1/12

NOTE TO PURCHASER:
ALL SALES OF PCORE PRODUCTS ARE SUBJECT
TO OUR STANDARD TERMS AND CONDITIONS
AND THE LIMITED WARRANTIES THEREUNDER